

BY VISION DEVELOPMENTS

# REEM





# TABLE OF CONTENT

- |    |                                  |     |                               |
|----|----------------------------------|-----|-------------------------------|
| 1. | Message From Our CEO             | 9.  | Smart Home Facilities         |
| 2. | Investing in Dubai’s vision 2040 | 10. | Air Quality Control           |
| 3. | The Dubai Experience             | 11. | REEM Lifestyle                |
| 4. | Location and Landmarks           | 12. | REEM Amenities and Facilities |
| 5. | Welcome to REEM                  | 13. | REEM Community                |
| 6. | Welcoming Reception              | 14. | REEM Renders                  |
| 7. | Your Space Matters               | 15. | Building Materials            |
| 8. | Building Management Facilities   | 16. | Floorplans                    |



This presentation is protected by UAE and International copyright laws. Reproduction and distribution of this presentation without written permission of the sponsor is prohibited.







## MESSAGE FROM OUR CEO



We chose to create spaces that families would truly appreciate living in. Our approach prioritizes generous space reminiscent of our ancestors' dwellings, yet infused with the modern sophistication of today.

Vision is more than just a company; it represents innovation,

unwavering commitment, and Emirati excellence. Through our vertically integrated real estate development platform, our legacy extends beyond mere bricks and mortar. It is crafted from visionary concepts, meticulous planning, and flawless execution.





# ✦ INVESTING IN DUBAI'S VISION 2040



Investing in Dubai presents a compelling proposition for discerning investors and prospective residents alike. Renowned for its unmatched safety, competitive property prices, and vibrant economy, Dubai stands as a beacon of opportunity in the global landscape. With a reputation for high capital appreciation and a business-friendly environment make it first in the region for ease of doing business, Dubai offers a conducive platform for entrepreneurial endeavors and investment growth.

Moreover, the absence of personal income tax, coupled with the allure of long-term residency through the Golden Visa program, adds to its appeal as a destination of choice. Strategically positioned as a global business hub with seamless worldwide connectivity, Dubai offers a lifestyle enriched by world-class amenities and cultural diversity. Embrace the promise of a prosperous future and elevate your standard of living by investing in the dynamic and vibrant city of Dubai.



## INVESTING IN REEM

Grants you the opportunity to secure a renewable two-year residency permit.

## POPULATION GROWTH

Dubai's Vision 2040 targets a population of 5.4 million.

## TAX

The absence of Income Tax, makes Dubai an ideal destination for investors.

## 100% BUSINESS OWNERSHIP

Applicable for all commercial companies

## GREENER DUBAI

Grants you the opportunity to secure a renewable two-year residency permit.

## EASE OF INVESTMENT

The absence of Income Tax, makes Dubai an ideal destination for investors.

Vision is more than just a company; it represents innovation, unwavering commitment, and Emirati excellence.



✦

# LUXURY UNLEASHED, THE DUBAI EXPERIENCE

Discover the stunning elegance of Dubai, where sophistication and beauty shine in every corner. Dubai captivates with its luxury, offering pristine beaches and excellent facilities for a top-notch lifestyle. Here, the extraordinary is normal, with wonders like the grand Burj Khalifa. Enjoy vibrant nightlife, rich culture, and unique shopping experiences. In Dubai, luxury is a part of everyday life, promising a world of exquisite living.







# DISCOVER Liwan

REEM , situated in the vibrant area of Liwan, exemplifies the essence of modern city living. It offers residents a seamless blend of convenience and accessibility, with excellent transport links. Ideally positioned near prestigious landmarks such as Dubai Outlet Mall, Global Village and IMG Worlds of Adventures, REEM ensures quick and easy access to key destinations

within the city, including Dubai Silicon Oasis and Dubai Academic City.

With its meticulously designed infrastructure and prime location, REEM embodies Dubai's commitment to excellence and high standards in property development.



# LOCATION & LANDMARKS

REEM , situated in the vibrant area of Liwan, exemplifies the essence of modern city living. It offers residents a seamless blend of convenience and accessibility, with excellent transport links. Ideally positioned near prestigious landmarks such.

## DUBAI INTL. AIRPORT

16 mins

## BURJ KHALIFA

20 mins

## DUBAI CREEK HARBOUR

15 mins

## IMG WORLDS

12 mins

## THE DUBAI MALL

20 mins

## OUTLET MALL

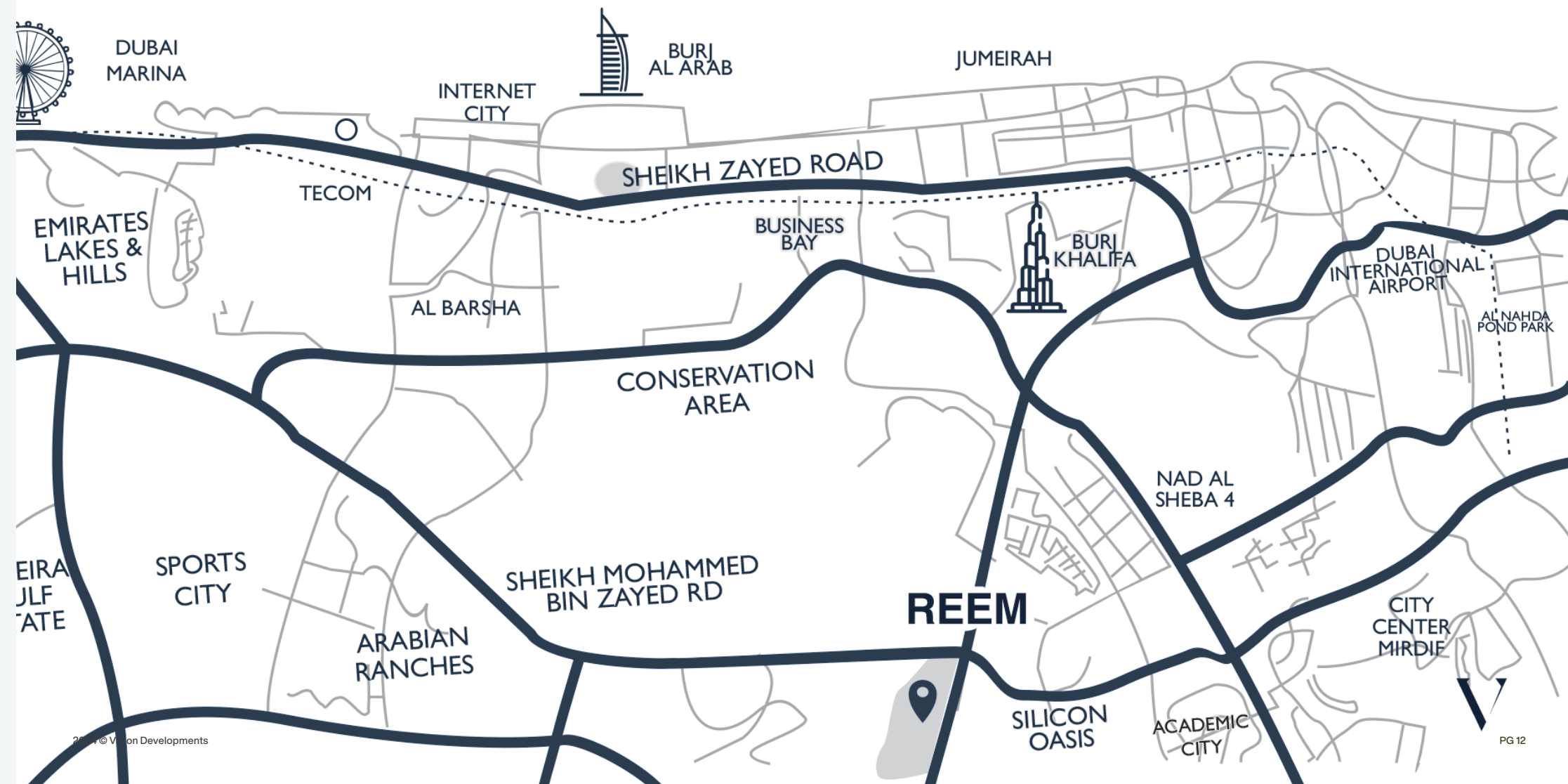
14 mins

## ACADEMIC CITY

10 mins

## GLOBAL VILLAGE

14 mins







# REEM

BY VISION DEVELOPMENTS

Welcome to reem , where every detail invites you to experience the heart of a vibrant lifestyle. With state-of-the-art amenities thoughtfully woven into the fabric of the community, you'll enjoy a perfect balance of comfort and convenience. Embrace the chance to live, flourish, and immerse yourself in the true spirit of Dubai at REEM .





## LUXURY CORRIDORS AND LOBBY REDEFINED



Luxury lobby and corridors redefine the standards for upscale living and professional environments. These spaces blend sophistication with functionality, featuring high-end finishes, advanced technology, and bespoke furnishings. Thoughtfully designed and strategically laid out, they embody a commitment to excellence, ensuring every journey through them is an experience of true luxury.









# YOUR SPACE MATTERS.

Studies indicate that spacious living environment positively impact health by providing more natural light, improving air quality, and offering space for physical activity, which enhances mental and physical well-being.

[Source]  
Journal of Environmental Psychology

Space is What We Need in Today’s Congested Life

## FLOOR-TO-FLOOR WINDOWS

Floor to floor windows, bringing in more natural light

## 180° OPEN VIEWS

Our apartments offer 180° open views, connecting residents to a breathtaking panorama of natural landmarks, enhancing your home with beauty and tranquility

## SPACIOUS APARTMENTS

Our apartments are 22% larger than the average apartments

## ELEVATED CEILINGS

High ceilings, at 3.4 meters. Our ceiling height is higher than the average





# PREMIUM FURNISHING AT EVERY STEP

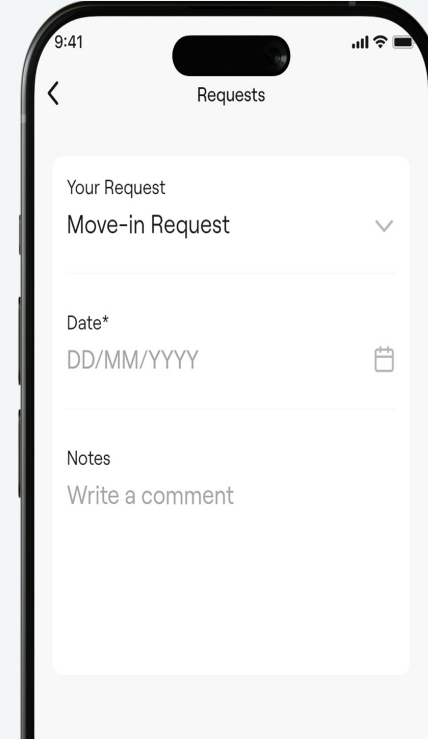
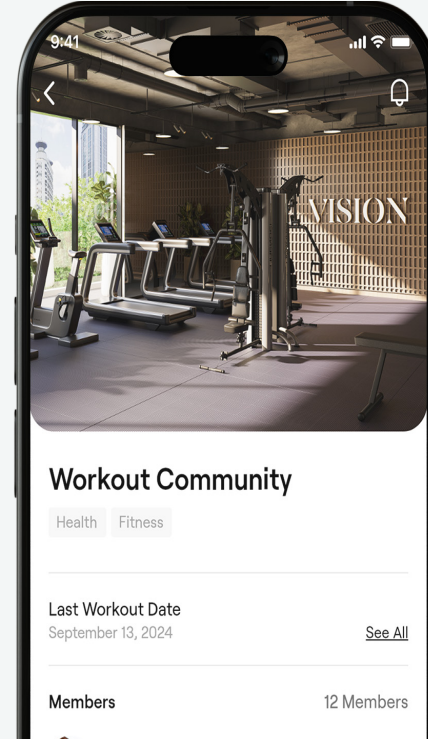
From intricately tiled lobby and corridors to elegantly finished walls, our commitment to premium quality shines through at every step. Each element of our design has been carefully selected and crafted to ensure a luxurious living experience.





## WE ARE RIGHT WHERE YOU ARE

At REEM , you will be able to communicate with your community and building management in various ways. You can call our toll-free number, contact us via our 24/7 WhatsApp line, or use the app and portal to process your requests.



### BOOKING FACILITIES

Such as, Reserving the gaming room for your kids' birthday party with ease!

### ENGAGE WITH THE COMMUNITY

Engage with the community on the community wall

### SMOOTH MOVE IN AND MOVE OUT

Hassle-free process for your move-ins and move-outs.

### TRACK YOUR REQUESTS

Effortlessly track the status of your requests.

### WORK PERMITS AND NOC'S

Apply for work permits and NOCs easily.

## ELEVATING EVERY CORNER OF YOUR LIVING SPACE

Our residences are equipped with Smart thermostats and smart door locks for automated comfort and security. You can enhance your living experience by adding other compatible Smart Home devices, allowing for a personalized and integrated smart home setup.





# ELEVATING EVERY CORNER OF YOUR LIVING SPACE

At REEM , we've taken your well-monitoring sensors. Breathe easy and healthy, promoting a better



being to heart by installing air quality knowing that the air you inhale is clean lifestyle for you and your family.

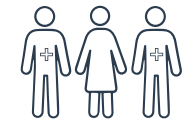
## AIR QUALITY MONITORING SYSTEM

Installing air quality sensors in buildings can significantly enhance resident health by continuously monitoring and managing indoor air conditions, reducing pollutants and ensuring optimal air quality.

(Source: Building and Environment Journal)



15% Energy Saving



Boost Facility Management Efficiency



60% Reduction in Absenteeism



Boost Your Energy & Concentration



Reduce Infection Risk (COVID 19, Flu etc.)



50% Increase in Productivity



# THIS IS NOT JUST A BUILDING, IT'S A LIFESTYLE



## CONCIERGE SERVICE

At REEM , true luxury goes beyond lavish amenities. Our concierge team is dedicated to providing personalized support, ensuring residents enjoy unparalleled comfort and convenience.

## ON DEMAND HOUSE KEEPING

Experience the epitome of convenience and care with out on-demand housekeeping service. Tailored for the discerning, our housekeeping ensures your home remains a pristine sanctuary.

## ON DEMAND DAY CARE

Our on demand daycare offers a nuturing environment for your little ones, blending educational activities with fun in a secure setting. This symbolize our dedication to enhancing your lifestyle and peace of mind.





# BUILDING FEATURES AND AMENITIES

At REEM, every day unfolds as a harmonious blend of relaxation, joy, and refined comfort. Here, world-class amenities and dedicated services come together to create a lifestyle beyond compare. Awaken your senses each morning in our state-of-the-art gym, equipped with the latest in fitness technology to inspire your wellness journey. As the day unfolds, retreat to the tranquil poolside, where the gentle hum of laughter and the warmth of the sun create the perfect backdrop for moments of leisure and connection.

When evening descends, elevate your experience at our sky parlor — a space

where panoramic views, golden sunsets, and the shimmering city skyline invite you to pause and savor the beauty of the moment.

At REEM, everything you need for effortless living is thoughtfully curated, from impeccably maintained facilities to personalized service, all designed with your comfort and satisfaction at heart. Welcome to a place where every detail is crafted to enrich your lifestyle — welcome to REEM, where luxury meets ease in perfect harmony.

- INFINITY SWIMMING POOL AND KIDS POOL
- SWIMMING POOL DECK
- BBQ AREA
- PARTY HALL
- KIDS PLAY AREA
- GAMING ROOM
- GYMNASIUM
- YOGA
- CINEMA





# STEP IN TO A WORLD OF POSSIBILITIES



Welcome to our state-of-the-art gym, where every workout is a step towards becoming your best self. Our fitness center is equipped with the latest machines and designed for your ultimate comfort, creating an environment that encourages you to push your limits and achieve your wellness goals. Whether you are a beginner or a seasoned fitness enthusiast, our gym offers a comprehensive experience that nurtures your body, mind, and spirit.







# ENJOY THE WORLD OF ENTERTAINMENT



Welcome to our cutting-edge cinema area, where every film is an immersive experience designed to transport you to another world. Featuring the latest audiovisual technology and plush seating, our theater is crafted for your ultimate comfort, creating an atmosphere that enhances every moment on screen. Whether you're a casual moviegoer or a dedicated cinephile, our cinema offers a fully enriched viewing experience that engages both your senses and imagination.



# THE ULTIMATE POOL EXPERIENCE



In the heart of our stunning residential community, we are proud to offer an exceptional swimming pool that serves as both a sanctuary for relaxation and a hub for active enjoyment. Whether you're looking to unwind after a long day or engage in a vigorous swim, our pool area provides the perfect setting for both.





# EXPERIENCE TOGETHERNESS AT REEM

## GAMER’S HAVEN

An immersive gaming experience awaits in our state-of-the-art gaming room, equipped with the latest consoles and games for hours of entertainment.

## PLAYTIME PARADISE

A vibrant safe space filled with fun and interactive activities, designed to spark joy and creativity in children of all ages.

## ENTERTAINMENT OASIS

Unwind and enjoy various recreational activities in our entertainment room, perfect for socializing, playing board games, or watching your favorite shows.

## CINEMATIC ESCAPE

Experience the magic of cinema in our private theatre, complete with plush seating and cutting-edge audio-visual technology for an unforgettable movie night.



Vision is more than just a company;  
it represents innovation, unwavering commitment, and Emirati excellence.



# YOUR FULLY EQUIPPED KITCHEN



Enhance your cooking experience in your fully equipped kitchen, complete with modern appliances, spacious countertops and elegant finishes tailored to meet your needs.







Reem by Vision

Reem by Vision

# SUPERIOR CRAFTSMANSHIP IN EVERY DETAIL



Our dedication to premium quality is evident in every detail of our spaces, from the intricately tiled lobby and corridors to the elegantly finished walls. Each element is meticulously crafted to reflect our high standards, ensuring a sophisticated and luxurious environment.



# THE PINNACLE OF MODERN LIVING

Experience the superior craftsmanship of REEM , where every element is constructed with the highest quality materials. The attention to detail in every aspect, from the soundproof walls to the energy-efficient lighting, guarantees a space that is not only stunning but also built to endure.









# ALL THE MATERIALS ARE CRAFTED WITH EXCELLENCE, BUILT TO LAST

Crafted with the finest high-end materials, our luxury apartments promise unparalleled durability and elegance. Enjoy a home where quality and beauty seamlessly blend, providing you with a sanctuary of style and strength.

## FINISHING MATERIALS



BATHROOM  
PORCELAIN



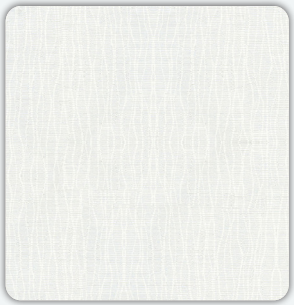
BATHROOM  
PORCELAIN



PORCELAIN  
FLOORING



SANITARYWARE  
BANGODESIGN



WALL  
PAINT



WOODEN  
DOOR



SMART AC  
THERMOSTAT



SMART  
LOCK



ELECTRICAL  
APPLIANCES



KITCHEN  
COUNTERTOPS



First Floor Plan



Typical Floor Plan  
(from 2nd to 8th floor)





# Unit 101

## 1 Bedroom | Level 1

Level 1  
Unit No.101

1  
Bedroom

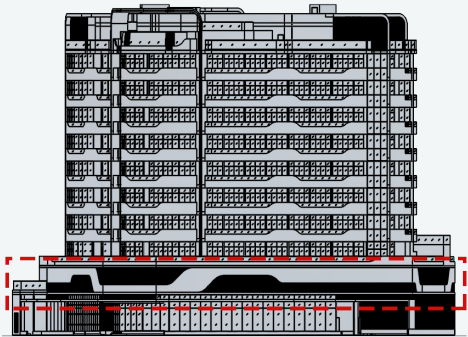
2  
Bathrooms

Indoor Living Area	Outdoor Living Area	Total Living Area
637.44 Sq.ft	304.40 Sq.ft	941.84 Sq.ft

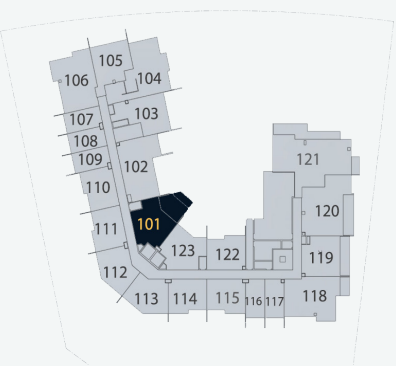
REEM

BY VISION

DISCLAIMER  
All measurements are indicative and are for marketing purposes only. All efforts have been made to ensure their accuracy, however these layouts are subject to change at the discretion of the developer and should not be relied upon as final. The actual area may vary from the stated area and the developer reserves the right to make the revisions/alterations at its absolute discretion, without any liability whatsoever.



Key Elevation



Key Plan

# Unit 102

## 2 Bedroom | Level 1

Level 1  
Unit No.102

2  
Bedroom

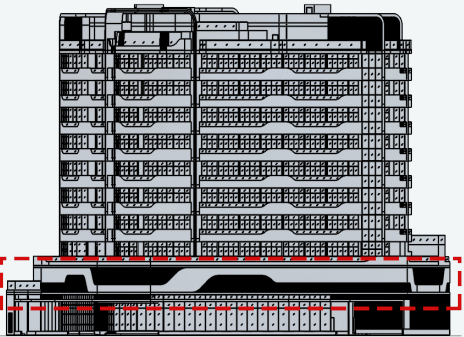
3  
Bathrooms

Indoor Living Area	Outdoor Living Area	Total Living Area
940.87 Sq.ft	474.47 Sq.ft	1415.35 Sq.ft

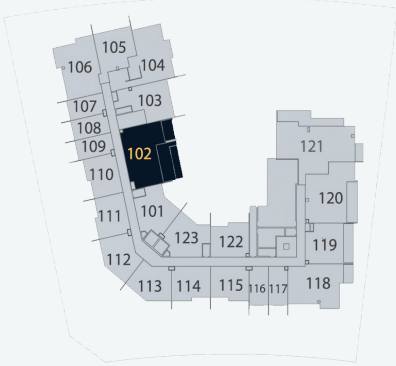
REEM

BY VISION

DISCLAIMER  
All measurements are indicative and are for marketing purposes only. All efforts have been made to ensure their accuracy, however these layouts are subject to change at the discretion of the developer and should not be relied upon as final. The actual area may vary from the stated area and the developer reserves the right to make the revisions/alterations at its absolute discretion, without any liability whatsoever.



Key Elevation



Key Plan



Floor Plan

# Unit 103

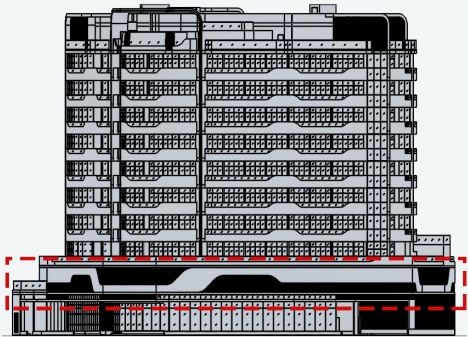
1 Bedroom | Level 1

Level 1  
Unit No.103

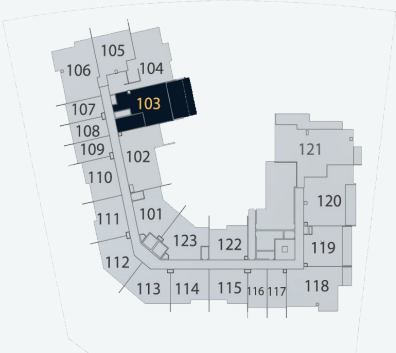
1  
Bedroom

2  
Bathrooms

Indoor Living Area	Outdoor Living Area	Total Living Area
711.28 Sq.ft	428.40 Sq.ft	1139.68 Sq.ft



Key Elevation



Key Plan

# Unit 104

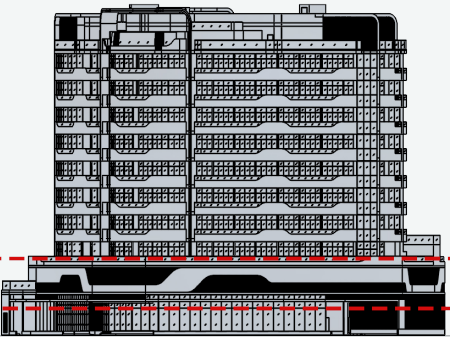
2 Bedroom | Level 1

Level 1  
Unit No.104

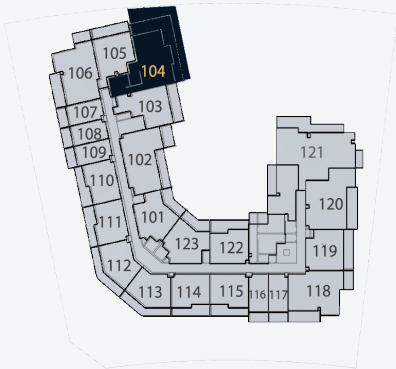
2  
Bedroom

3  
Bathrooms

Indoor Living Area	Outdoor Living Area	Total Living Area
1085.97 Sq.ft	954.87 Sq.ft	2040.84 Sq.ft



Key Elevation



Key Plan

# REEM

BY VISION

DISCLAIMER  
All measurements are indicative and are for marketing purposes only. All efforts have been made to ensure their accuracy, however these layouts are subject to change at the discretion of the developer and should not be relied upon as final. The actual area may vary from the stated area and the developer reserves the right to make the revisions/alterations at its absolute discretion, without any liability whatsoever.



# Unit 105

## 1 Bedroom | Level 1

Level 1  
Unit No.105

1  
Bedroom

2  
Bathrooms

Indoor  
Living Area  
  
666.29  
Sq.ft

Outdoor  
Living Area  
  
457.68  
Sq.ft

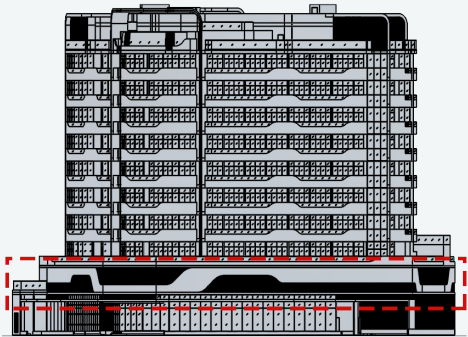
Total  
Living Area  
  
1123.97  
Sq.ft

REEM

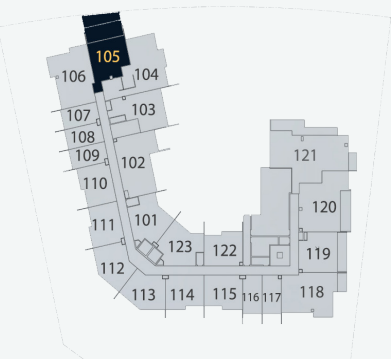
BY VISION

DISCLAIMER  
All measurements are indicative and are for marketing purposes only. All efforts have been made to ensure their accuracy, however these layouts are subject to change at the discretion of the developer and should not be relied upon as final. The actual area may vary from the stated area and the developer reserves the right to make the revisions/alterations at its absolute discretion, without any liability whatsoever.

Floor Plan



Key Elevation



Key Plan

# Unit 106

## 2 Bedroom | Level 1

Level 1  
Unit No.106

2  
Bedroom

3  
Bathrooms

Indoor  
Living Area  
  
934.20  
Sq.ft

Outdoor  
Living Area  
  
1381.01  
Sq.ft

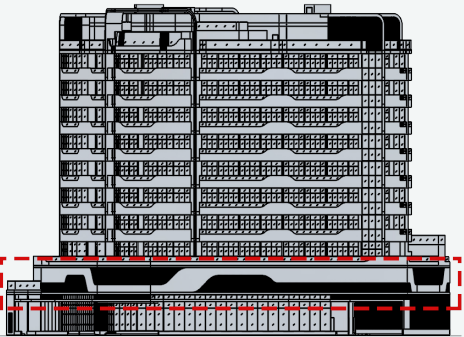
Total  
Living Area  
  
2315.21  
Sq.ft

REEM

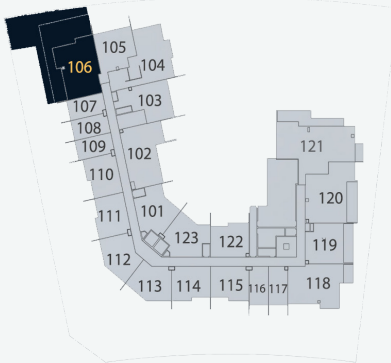
BY VISION

DISCLAIMER  
All measurements are indicative and are for marketing purposes only. All efforts have been made to ensure their accuracy, however these layouts are subject to change at the discretion of the developer and should not be relied upon as final. The actual area may vary from the stated area and the developer reserves the right to make the revisions/alterations at its absolute discretion, without any liability whatsoever.

Floor Plan



Key Elevation



Key Plan



# Unit 107

Studio | Level 1

Level 1  
Unit No.107

1  
Kitchen

1  
Bathroom

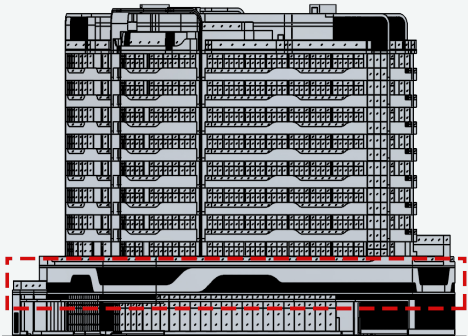
Indoor Living Area	Outdoor Living Area	Total Living Area
317.00 Sq.ft	178.25 Sq.ft	495.25 Sq.ft

# REEM

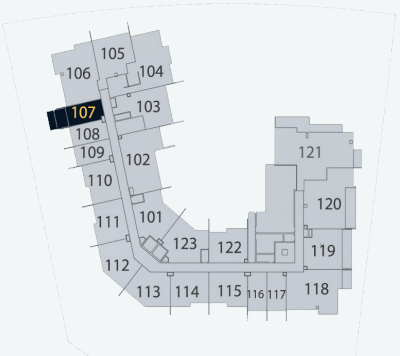
BY VISION

DISCLAIMER  
All measurements are indicative and are for marketing purposes only. All efforts have been made to ensure their accuracy, however these layouts are subject to change at the discretion of the developer and should not be relied upon as final. The actual area may vary from the stated area and the developer reserves the right to make the revisions/alterations at its absolute discretion, without any liability whatsoever.

Floor Plan



Key Elevation



Key Plan

# Unit 108

Studio | Level 1

Level 1  
Unit No.108

1  
Kitchen

1  
Bathroom

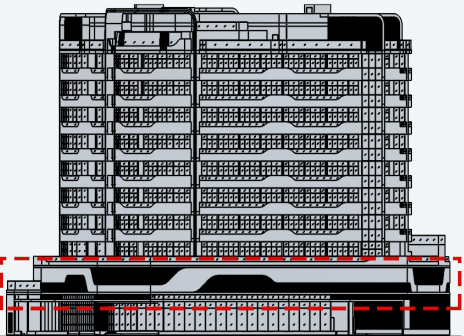
Indoor Living Area	Outdoor Living Area	Total Living Area
316.67 Sq.ft	177.82 Sq.ft	494.49 Sq.ft

# REEM

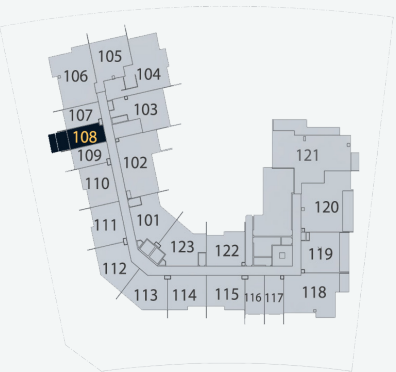
BY VISION

DISCLAIMER  
All measurements are indicative and are for marketing purposes only. All efforts have been made to ensure their accuracy, however these layouts are subject to change at the discretion of the developer and should not be relied upon as final. The actual area may vary from the stated area and the developer reserves the right to make the revisions/alterations at its absolute discretion, without any liability whatsoever.

Floor Plan



Key Elevation



Key Plan



# Unit 109

## Studio | Level 1

Level 1  
Unit No.109

1  
Kitchen

1  
Bathroom

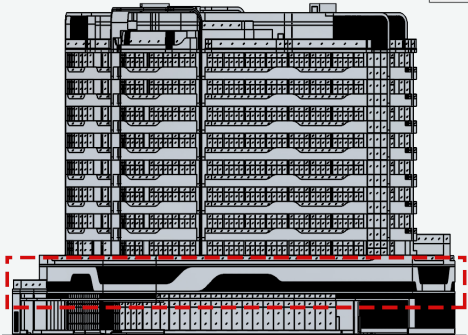
Indoor Living Area	Outdoor Living Area	Total Living Area
317.00 Sq.ft	178.25 Sq.ft	495.25 Sq.ft

REEM

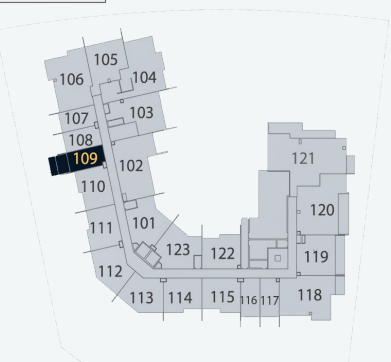
BY VISION

DISCLAIMER  
All measurements are indicative and are for marketing purposes only. All efforts have been made to ensure their accuracy, however these layouts are subject to change at the discretion of the developer and should not be relied upon as final. The actual area may vary from the stated area and the developer reserves the right to make the revisions/alterations at its absolute discretion, without any liability whatsoever.

Floor Plan



Key Elevation



Key Plan

# Unit 110

## 1 Bedroom | Level 1

Level 1  
Unit No.110

1  
Bedroom

2  
Bathrooms

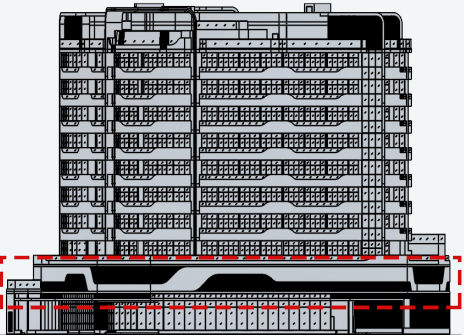
Indoor Living Area	Outdoor Living Area	Total Living Area
537.87 Sq.ft	457.47 Sq.ft	995.34 Sq.ft

REEM

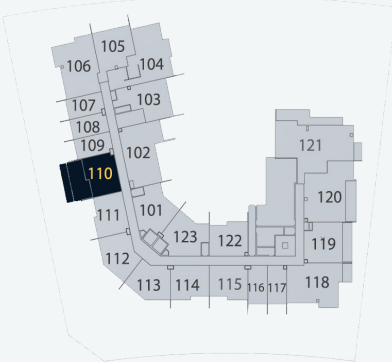
BY VISION

DISCLAIMER  
All measurements are indicative and are for marketing purposes only. All efforts have been made to ensure their accuracy, however these layouts are subject to change at the discretion of the developer and should not be relied upon as final. The actual area may vary from the stated area and the developer reserves the right to make the revisions/alterations at its absolute discretion, without any liability whatsoever.

Floor Plan



Key Elevation



Key Plan



# Unit 111

## 1 Bedroom | Level 1

Level 1  
Unit No.111

1  
Bedroom

2  
Bathrooms

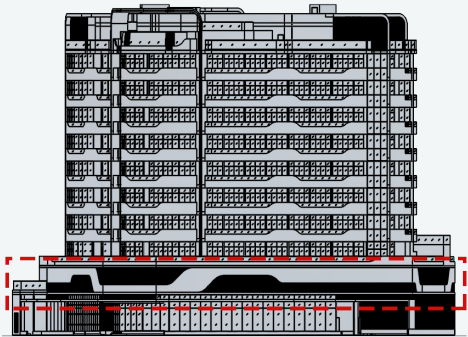
Indoor Living Area	Outdoor Living Area	Total Living Area
537.23 Sq.ft	458.33 Sq.ft	995.55 Sq.ft

REEM

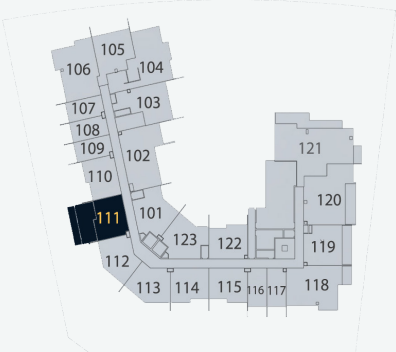
BY VISION

DISCLAIMER  
All measurements are indicative and are for marketing purposes only. All efforts have been made to ensure their accuracy, however these layouts are subject to change at the discretion of the developer and should not be relied upon as final. The actual area may vary from the stated area and the developer reserves the right to make the revisions/alterations at its absolute discretion, without any liability whatsoever.

Floor Plan



Key Elevation



Key Plan

# Unit 112

## 1 Bedroom | Level 1

Level 1  
Unit No.112

1  
Bedroom

2  
Bathrooms

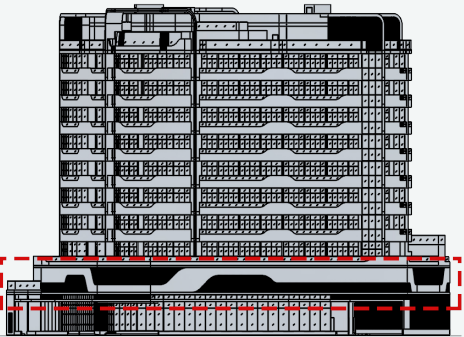
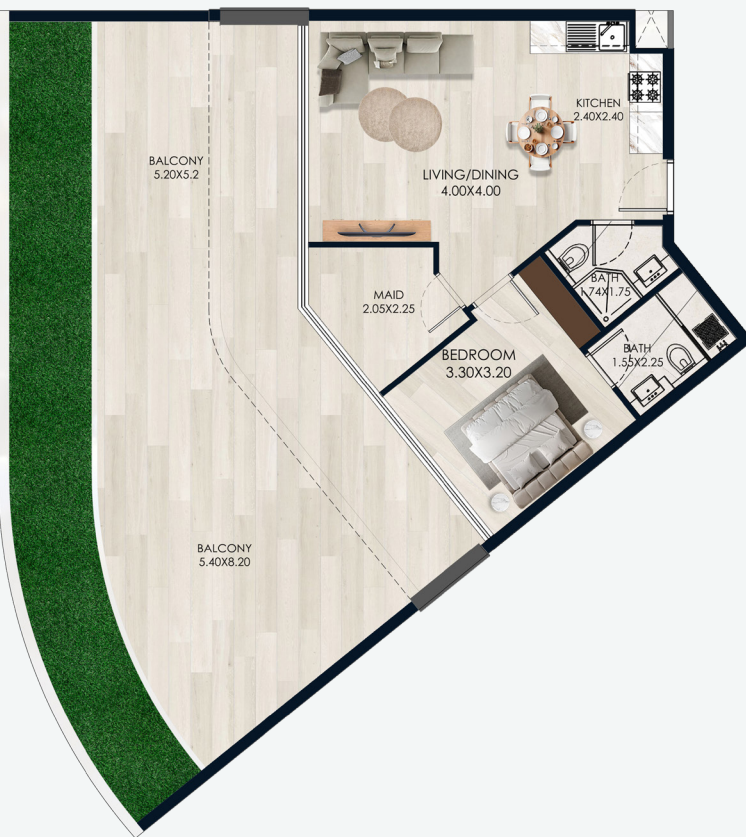
Indoor Living Area	Outdoor Living Area	Total Living Area
575.01 Sq.ft	837.86 Sq.ft	1412.87 Sq.ft

REEM

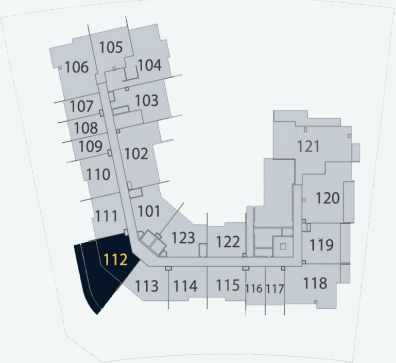
BY VISION

DISCLAIMER  
All measurements are indicative and are for marketing purposes only. All efforts have been made to ensure their accuracy, however these layouts are subject to change at the discretion of the developer and should not be relied upon as final. The actual area may vary from the stated area and the developer reserves the right to make the revisions/alterations at its absolute discretion, without any liability whatsoever.

Floor Plan



Key Elevation



Key Plan



Unit 113

1 Bedroom | Level 1

Level 1  
Unit No.113

1  
Bedroom

2  
Bathrooms

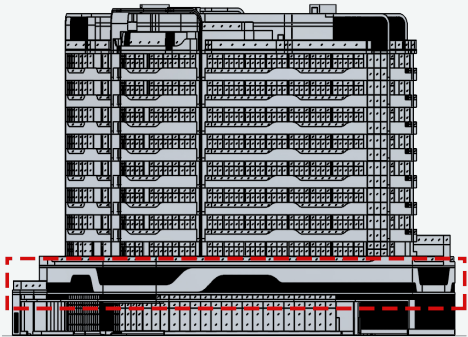
Indoor Living Area	Outdoor Living Area	Total Living Area
575.01 Sq.ft	889.42 Sq.ft	1464.43 Sq.ft

REEM

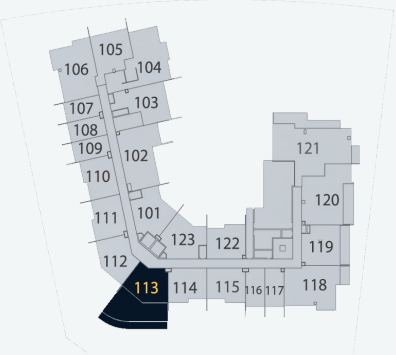
BY VISION

DISCLAIMER  
All measurements are indicative and are for marketing purposes only. All efforts have been made to ensure their accuracy, however these layouts are subject to change at the discretion of the developer and should not be relied upon as final. The actual area may vary from the stated area and the developer reserves the right to make the revisions/alterations at its absolute discretion, without any liability whatsoever.

Floor Plan



Key Elevation



Key Plan

Unit 114

1 Bedroom | Level 1

Level 1  
Unit No.114

1  
Bedroom

2  
Bathrooms

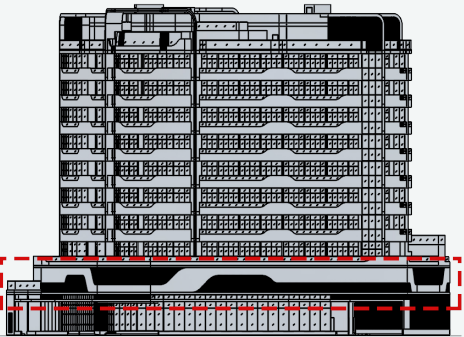
Indoor Living Area	Outdoor Living Area	Total Living Area
537.12 Sq.ft	494.06 Sq.ft	1031.18 Sq.ft

REEM

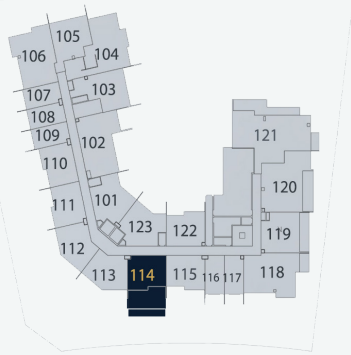
BY VISION

DISCLAIMER  
All measurements are indicative and are for marketing purposes only. All efforts have been made to ensure their accuracy, however these layouts are subject to change at the discretion of the developer and should not be relied upon as final. The actual area may vary from the stated area and the developer reserves the right to make the revisions/alterations at its absolute discretion, without any liability whatsoever.

Floor Plan



Key Elevation



Key Plan



Unit 115

1 Bedroom | Level 1

Level 1  
Unit No.115

1  
Bedroom

2  
Bathrooms

Indoor  
Living Area

537.87  
Sq.ft

Outdoor  
Living Area

492.23  
Sq.ft

Total  
Living Area

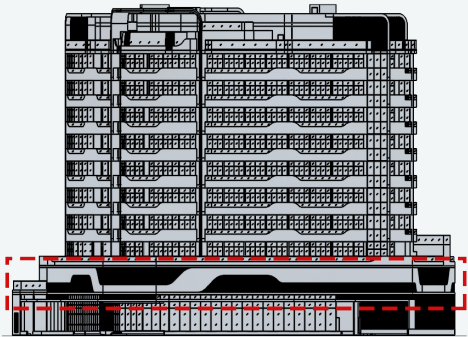
1030.11  
Sq.ft

REEM

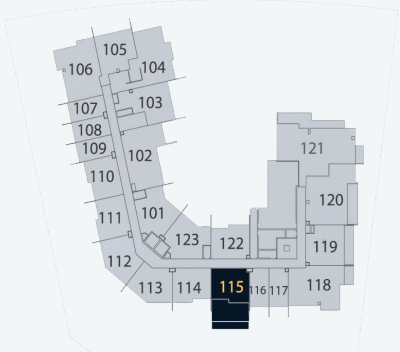
BY VISION

DISCLAIMER  
All measurements are indicative and are for marketing purposes only. All efforts have been made to ensure their accuracy, however these layouts are subject to change at the discretion of the developer and should not be relied upon as final. The actual area may vary from the stated area and the developer reserves the right to make the revisions/alterations at its absolute discretion, without any liability whatsoever.

Floor Plan



Key Elevation



Key Plan

Unit 116

Studio | Level 1

Level 1  
Unit No.116

1  
Kitchen

1  
Bathroom

Indoor  
Living Area

317.00  
Sq.ft

Outdoor  
Living Area

195.58  
Sq.ft

Total  
Living Area

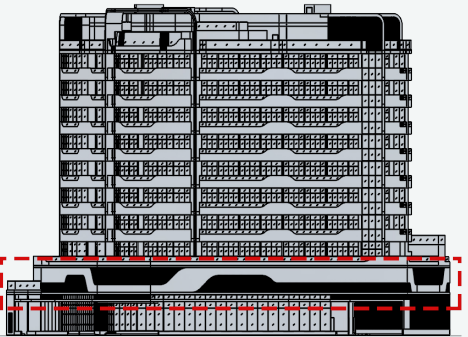
512.58  
Sq.ft

REEM

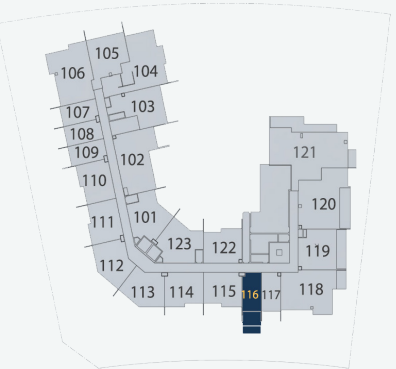
BY VISION

DISCLAIMER  
All measurements are indicative and are for marketing purposes only. All efforts have been made to ensure their accuracy, however these layouts are subject to change at the discretion of the developer and should not be relied upon as final. The actual area may vary from the stated area and the developer reserves the right to make the revisions/alterations at its absolute discretion, without any liability whatsoever.

Floor Plan



Key Elevation



Key Plan



# Unit 117

## Studio | Level 1

Level 1  
Unit No.117

1  
Kitchen

1  
Bathroom

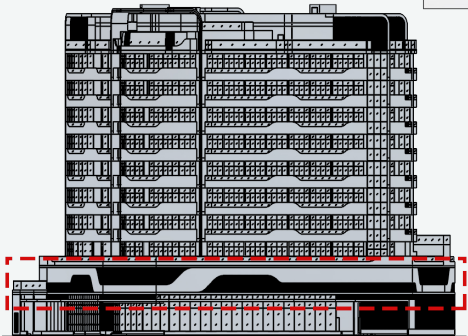
Indoor Living Area	Outdoor Living Area	Total Living Area
317.00 Sq.ft	195.58 Sq.ft	512.58 Sq.ft

REEM

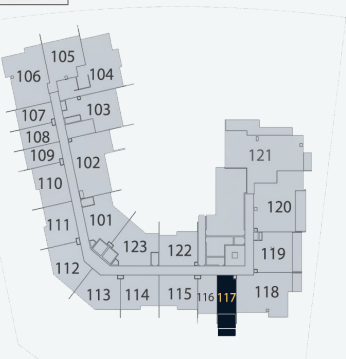
BY VISION

DISCLAIMER  
All measurements are indicative and are for marketing purposes only. All efforts have been made to ensure their accuracy, however these layouts are subject to change at the discretion of the developer and should not be relied upon as final. The actual area may vary from the stated area and the developer reserves the right to make the revisions/alterations at its absolute discretion, without any liability whatsoever.

Floor Plan



Key Elevation



Key Plan

# Unit 118

## 2 Bedroom | Level 1

Level 1  
Unit No.118

2  
Bedroom

3  
Bathrooms

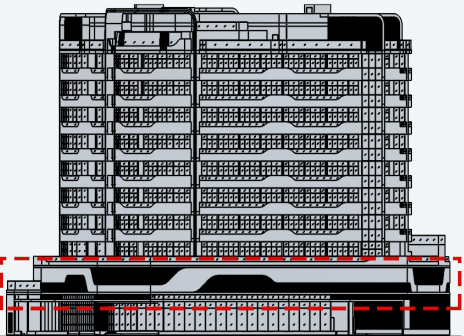
Indoor Living Area	Outdoor Living Area	Total Living Area
940.01 Sq.ft	1147.33 Sq.ft	2087.34 Sq.ft

REEM

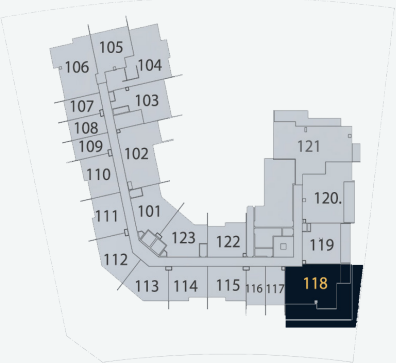
BY VISION

DISCLAIMER  
All measurements are indicative and are for marketing purposes only. All efforts have been made to ensure their accuracy, however these layouts are subject to change at the discretion of the developer and should not be relied upon as final. The actual area may vary from the stated area and the developer reserves the right to make the revisions/alterations at its absolute discretion, without any liability whatsoever.

Floor Plan



Key Elevation



Key Plan



Floor Plan

Unit 119

1 Bedroom | Level 1

Level 1  
Unit No.119

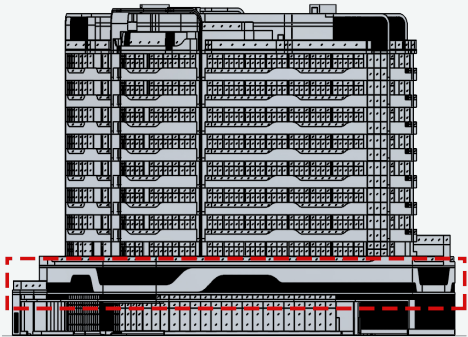
1  
Bedroom

2  
Bathrooms

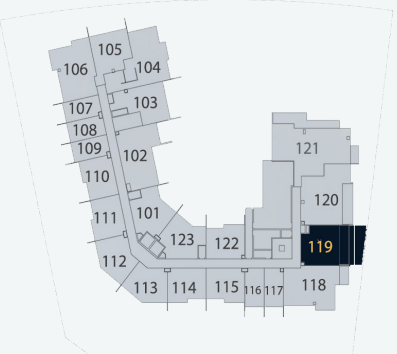
Indoor  
Living Area  
  
635.29  
Sq.ft

Outdoor  
Living Area  
  
462.53  
Sq.ft

Total  
Living Area  
  
1097.81  
Sq.ft



Key Elevation



Key Plan

Unit 120

2 Bedroom | Level 1

Level 1  
Unit No.120

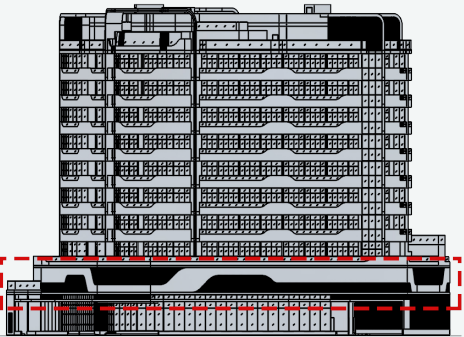
2  
Bedroom

3  
Bathrooms

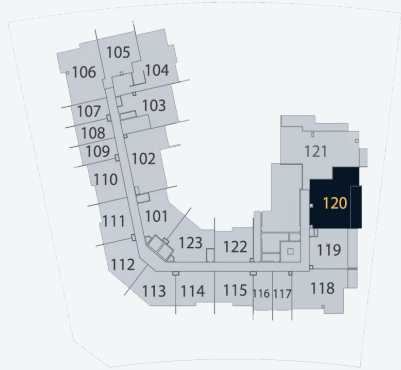
Indoor  
Living Area  
  
1045.50  
Sq.ft

Outdoor  
Living Area  
  
678.99  
Sq.ft

Total  
Living Area  
  
1724.49  
Sq.ft



Key Elevation



Key Plan

REEM

BY VISION

DISCLAIMER  
All measurements are indicative and are for marketing purposes only. All efforts have been made to ensure their accuracy, however these layouts are subject to change at the discretion of the developer and should not be relied upon as final. The actual area may vary from the stated area and the developer reserves the right to make the revisions/ alterations at its absolute discretion, without any liability whatsoever.



# Unit 121

## 3 Bedroom | Level 1

Level 1  
Unit No.121

3  
Bedroom

4  
Bathrooms

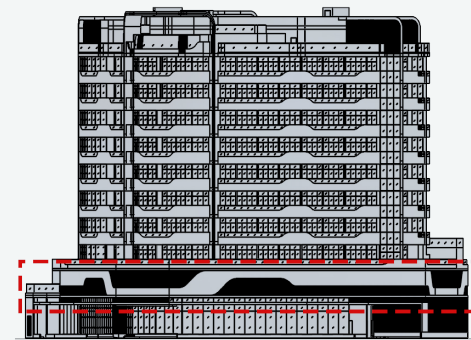
Indoor Living Area	Outdoor Living Area	Total Living Area
1397.59 Sq.ft	1849.56 Sq.ft	3247.15 Sq.ft

# REEM

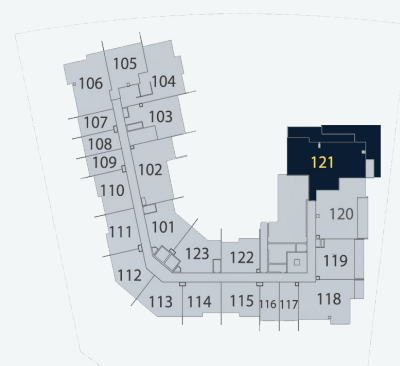
BY VISION

**DISCLAIMER**  
All measurements are indicative and are for marketing purposes only. All efforts have been made to ensure their accuracy, however these layouts are subject to change at the discretion of the developer and should not be relied upon as final. The actual area may vary from the stated area and the developer reserves the right to make the revisions/alterations at its absolute discretion, without any liability whatsoever.

Floor Plan



Key Elevation



Key Plan

# Unit 122

## 1 Bedroom | Level 1

Level 1  
Unit No.122

1  
Bedroom

2  
Bathrooms

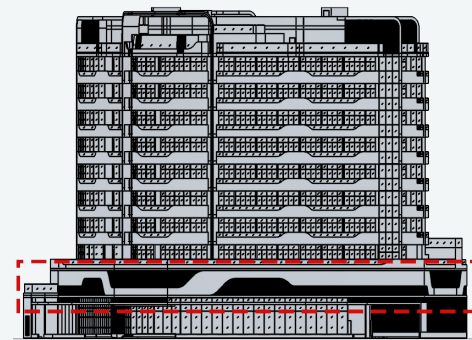
Indoor Living Area	Outdoor Living Area	Total Living Area
538.63 Sq.ft	403.97 Sq.ft	942.60 Sq.ft

# REEM

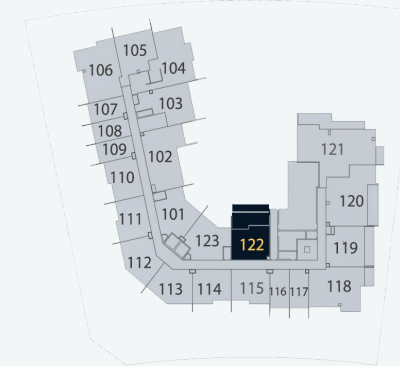
BY VISION

**DISCLAIMER**  
All measurements are indicative and are for marketing purposes only. All efforts have been made to ensure their accuracy, however these layouts are subject to change at the discretion of the developer and should not be relied upon as final. The actual area may vary from the stated area and the developer reserves the right to make the revisions/alterations at its absolute discretion, without any liability whatsoever.

Floor Plan



Key Elevation



Key Plan



# Unit 123

1 Bedroom | Level 1

Level 1 Unit No.123	1 Bedroom	2 Bathrooms
------------------------	--------------	----------------

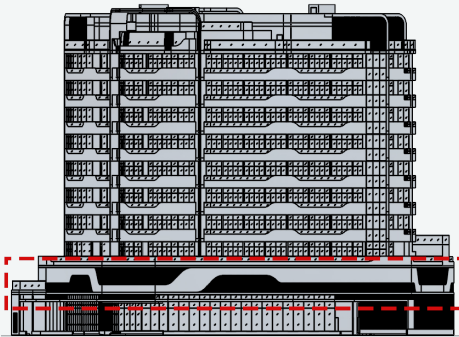
Indoor Living Area	Outdoor Living Area	Total Living Area
637.44 Sq.ft	304.40 Sq.ft	941.84 Sq.ft

# REEM

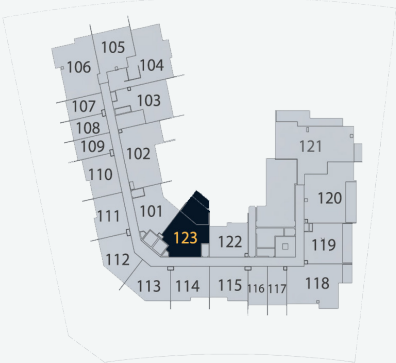
BY VISION

DISCLAIMER  
All measurements are indicative and are for marketing purposes only. All efforts have been made to ensure their accuracy, however these layouts are subject to change at the discretion of the developer and should not be relied upon as final. The actual area may vary from the stated area and the developer reserves the right to make the revisions/ alterations at its absolute discretion, without any liability whatsoever.

Floor Plan



Key Elevation



Key Plan





# Unit 001

## 1 Bedroom | Typical Level 2-8

Level 2-8

Unit No.001

1 Bedroom

2 Bathrooms

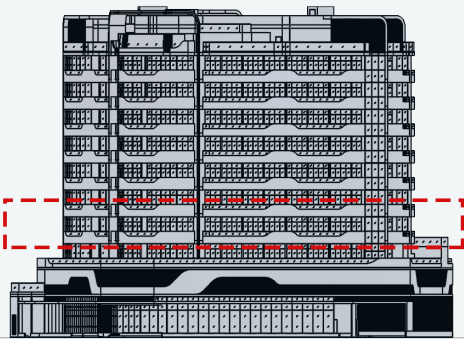
Indoor Living Area	Outdoor Living Area	Total Living Area
637.44 Sq.ft	144.34 Sq.ft	781.78 Sq.ft

REEM

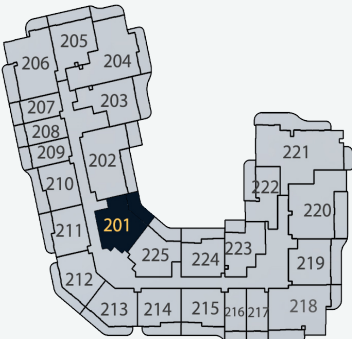
BY VISION

DISCLAIMER  
All measurements are indicative and are for marketing purposes only. All efforts have been made to ensure their accuracy, however these layouts are subject to change at the discretion of the developer and should not be relied upon as final. The actual area may vary from the stated area and the developer reserves the right to make the revisions/alterations at its absolute discretion, without any liability whatsoever.

Floor Plan



Key Elevation



Key Plan

# Unit 002

## 2 Bedroom | Typical Level 2-8

Level 2-8

Unit No.002

2 Bedroom

3 Bathrooms

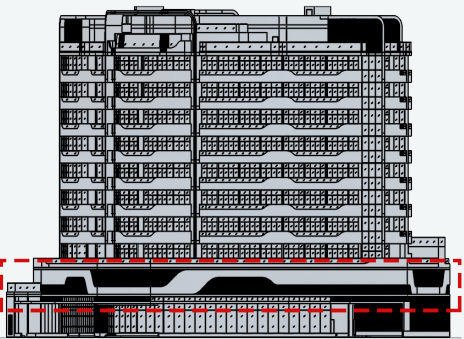
Indoor Living Area	Outdoor Living Area	Total Living Area
940.87 Sq.ft	267.27 Sq.ft	1208.14 Sq.ft

REEM

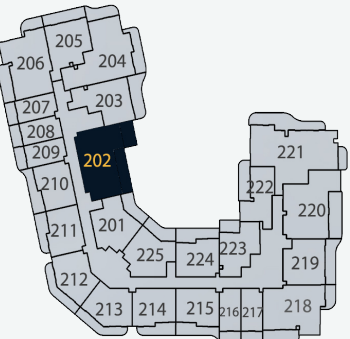
BY VISION

DISCLAIMER  
All measurements are indicative and are for marketing purposes only. All efforts have been made to ensure their accuracy, however these layouts are subject to change at the discretion of the developer and should not be relied upon as final. The actual area may vary from the stated area and the developer reserves the right to make the revisions/alterations at its absolute discretion, without any liability whatsoever.

Floor Plan



Key Elevation



Key Plan



# Unit 003

## 1 Bedroom | Typical Level 2-8

Level 2-8  
Unit No.003

1  
Bedroom

2  
Bathrooms

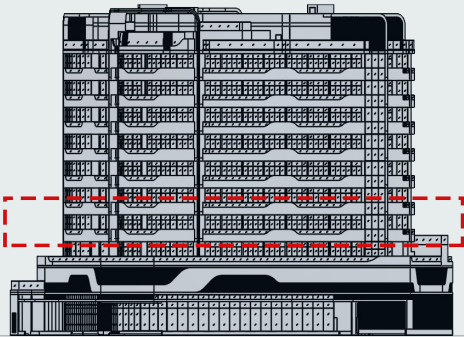
Indoor Living Area	Outdoor Living Area	Total Living Area
711.17 Sq.ft	199.13 Sq.ft	910.30 Sq.ft

REEM

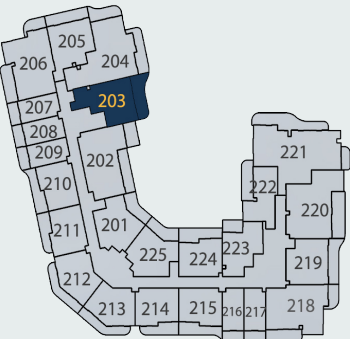
BY VISION

DISCLAIMER  
All measurements are indicative and are for marketing purposes only. All efforts have been made to ensure their accuracy, however these layouts are subject to change at the discretion of the developer and should not be relied upon as final. The actual area may vary from the stated area and the developer reserves the right to make the revisions/alterations at its absolute discretion, without any liability whatsoever.

Floor Plan



Key Elevation



Key Plan

# Unit 004

## 2 Bedroom | Typical Level 2-8

Level 2-8  
Unit No.004

2  
Bedroom

3  
Bathrooms

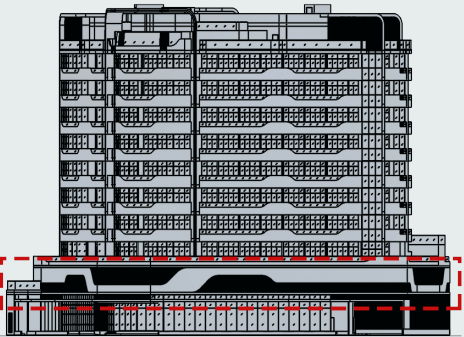
Indoor Living Area	Outdoor Living Area	Total Living Area
1085.97 Sq.ft	309.46 Sq.ft	1395.43 Sq.ft

REEM

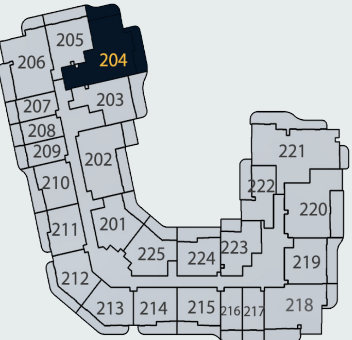
BY VISION

DISCLAIMER  
All measurements are indicative and are for marketing purposes only. All efforts have been made to ensure their accuracy, however these layouts are subject to change at the discretion of the developer and should not be relied upon as final. The actual area may vary from the stated area and the developer reserves the right to make the revisions/alterations at its absolute discretion, without any liability whatsoever.

Floor Plan



Key Elevation



Key Plan



# Unit 005

## 1 Bedroom | Typical Level 2-8

Level 2-8  
Unit No.005

1  
Bedroom

2  
Bathrooms

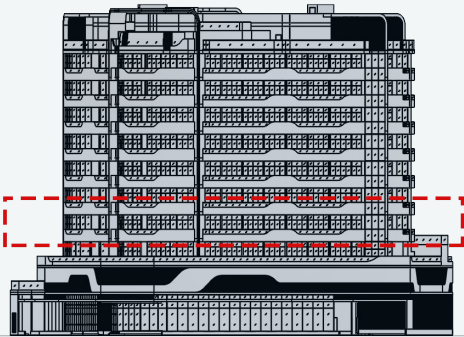
Indoor Living Area	Outdoor Living Area	Total Living Area
666.39 Sq.ft	170.07 Sq.ft	836.46 Sq.ft

REEM

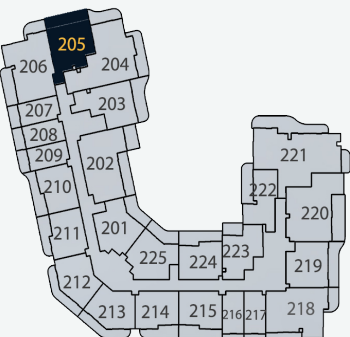
BY VISION

DISCLAIMER  
All measurements are indicative and are for marketing purposes only. All efforts have been made to ensure their accuracy, however these layouts are subject to change at the discretion of the developer and should not be relied upon as final. The actual area may vary from the stated area and the developer reserves the right to make the revisions/alterations at its absolute discretion, without any liability whatsoever.

Floor Plan



Key Elevation



Key Plan

# Unit 006

## 2 Bedroom | Typical Level 2-8

Level 2-8  
Unit No.006

2  
Bedroom

3  
Bathrooms

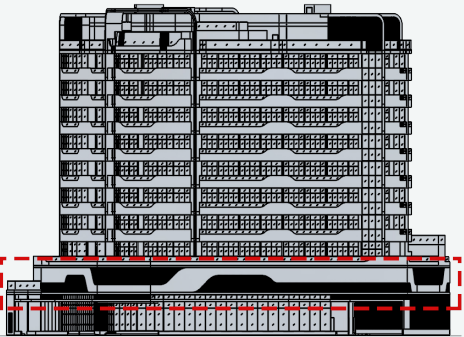
Indoor Living Area	Outdoor Living Area	Total Living Area
934.09 Sq.ft	249.62 Sq.ft	1183.71 Sq.ft

REEM

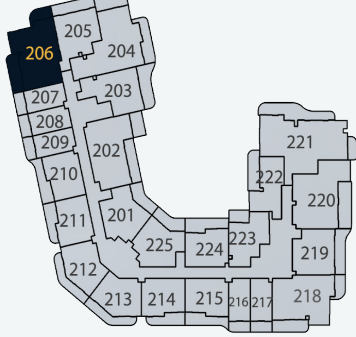
BY VISION

DISCLAIMER  
All measurements are indicative and are for marketing purposes only. All efforts have been made to ensure their accuracy, however these layouts are subject to change at the discretion of the developer and should not be relied upon as final. The actual area may vary from the stated area and the developer reserves the right to make the revisions/alterations at its absolute discretion, without any liability whatsoever.

Floor Plan



Key Elevation



Key Plan



# Unit 007

## Studio | Typical Level 2-8

Level 2-8  
Unit No.007

1  
Kitchen

1  
Bathroom

Indoor Living Area	Outdoor Living Area	Total Living Area
317.00 Sq.ft	83.21 Sq.ft	400.20 Sq.ft

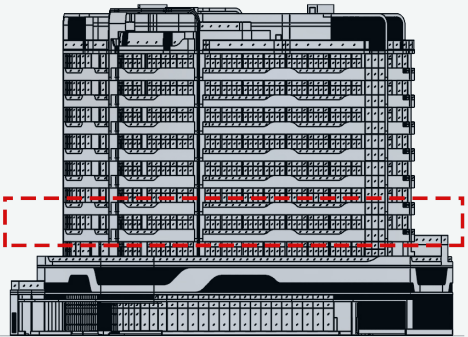
# REEM

BY VISION

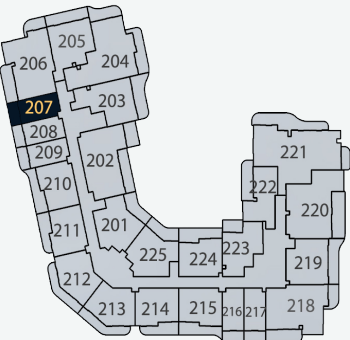
DISCLAIMER  
All measurements are indicative and are for marketing purposes only. All efforts have been made to ensure their accuracy, however these layouts are subject to change at the discretion of the developer and should not be relied upon as final. The actual area may vary from the stated area and the developer reserves the right to make the revisions/alterations at its absolute discretion, without any liability whatsoever.

Reem by Vision

Floor Plan



Key Elevation



Key Plan

# Unit 008

## Studio | Typical Level 2-8

Level 2-8  
Unit No.008

1  
Kitchen

1  
Bathroom

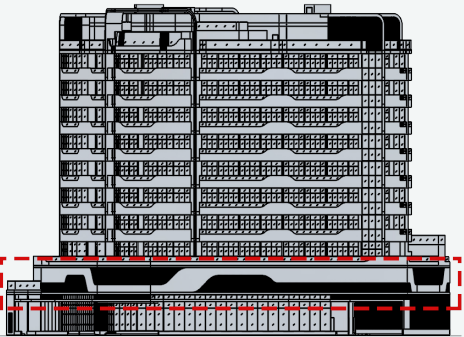
Indoor Living Area	Outdoor Living Area	Total Living Area
316.67 Sq.ft	82.02 Sq.ft	398.70 Sq.ft

# REEM

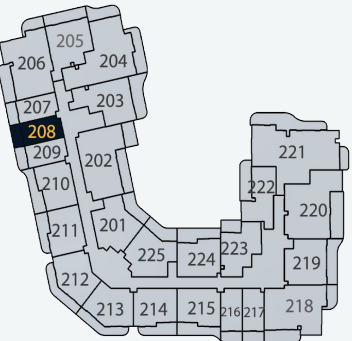
BY VISION

DISCLAIMER  
All measurements are indicative and are for marketing purposes only. All efforts have been made to ensure their accuracy, however these layouts are subject to change at the discretion of the developer and should not be relied upon as final. The actual area may vary from the stated area and the developer reserves the right to make the revisions/alterations at its absolute discretion, without any liability whatsoever.

Floor Plan



Key Elevation



Key Plan



# Unit 009

## Studio | Typical Level 2-8

Level 2-8  
Unit No.009

1  
Kitchen

1  
Bathroom

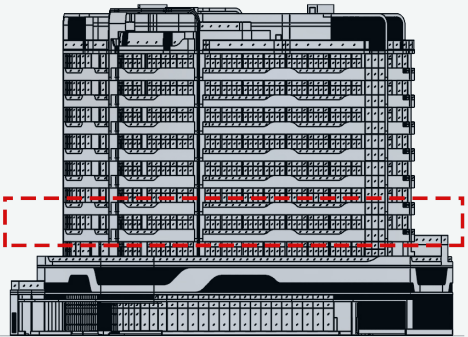
Indoor Living Area	Outdoor Living Area	Total Living Area
317.00 Sq.ft	83.31 Sq.ft	400.31 Sq.ft

REEM

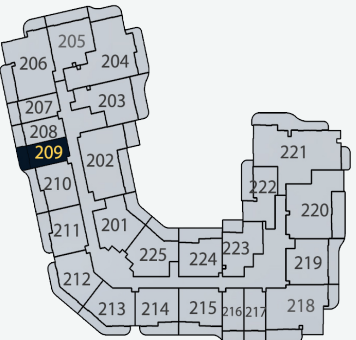
BY VISION

DISCLAIMER  
All measurements are indicative and are for marketing purposes only. All efforts have been made to ensure their accuracy, however these layouts are subject to change at the discretion of the developer and should not be relied upon as final. The actual area may vary from the stated area and the developer reserves the right to make the revisions/alterations at its absolute discretion, without any liability whatsoever.

Floor Plan



Key Elevation



Key Plan

# Unit 010

## 1 Bedroom | Typical Level 2-8

Level 2-8  
Unit No.010

1  
Bedroom

2  
Bathrooms

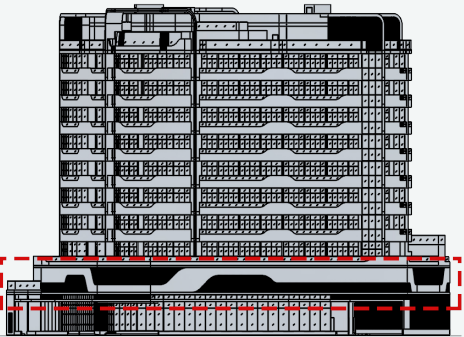
Indoor Living Area	Outdoor Living Area	Total Living Area
537.87 Sq.ft	170.29 Sq.ft	708.16 Sq.ft

REEM

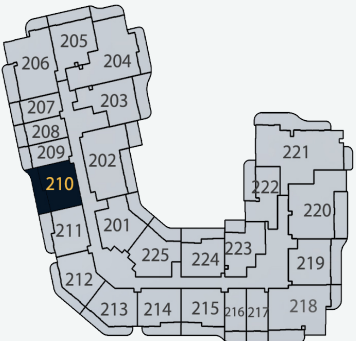
BY VISION

DISCLAIMER  
All measurements are indicative and are for marketing purposes only. All efforts have been made to ensure their accuracy, however these layouts are subject to change at the discretion of the developer and should not be relied upon as final. The actual area may vary from the stated area and the developer reserves the right to make the revisions/alterations at its absolute discretion, without any liability whatsoever.

Floor Plan



Key Elevation



Key Plan



# Unit 011

## 1 Bedroom | Typical Level 2-8

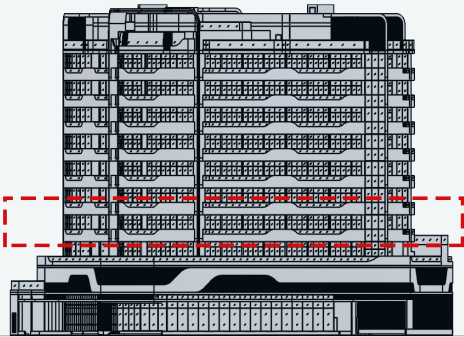
Level 2-8 Unit No.011	1 Bedroom	2 Bathrooms
Indoor Living Area	Outdoor Living Area	Total Living Area
537.23 Sq.ft	146.93 Sq.ft	684.15 Sq.ft

REEM

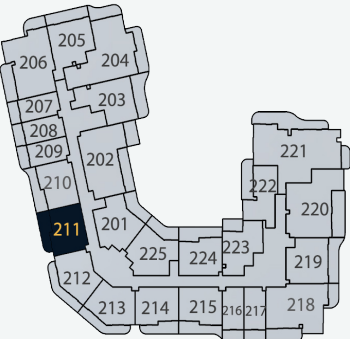
BY VISION

DISCLAIMER  
All measurements are indicative and are for marketing purposes only. All efforts have been made to ensure their accuracy, however these layouts are subject to change at the discretion of the developer and should not be relied upon as final. The actual area may vary from the stated area and the developer reserves the right to make the revisions/alterations at its absolute discretion, without any liability whatsoever.

Floor Plan



Key Elevation



Key Plan

# Unit 012

## 1 Bedroom | Typical Level 2-8

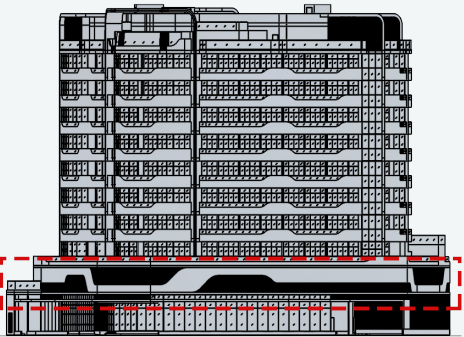
Level 2-8 Unit No.012	1 Bedroom	2 Bathrooms
Indoor Living Area	Outdoor Living Area	Total Living Area
575.01 Sq.ft	178.57 Sq.ft	753.58 Sq.ft

REEM

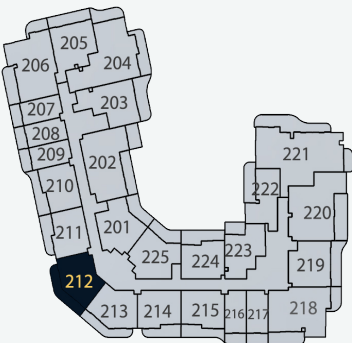
BY VISION

DISCLAIMER  
All measurements are indicative and are for marketing purposes only. All efforts have been made to ensure their accuracy, however these layouts are subject to change at the discretion of the developer and should not be relied upon as final. The actual area may vary from the stated area and the developer reserves the right to make the revisions/alterations at its absolute discretion, without any liability whatsoever.

Floor Plan



Key Elevation



Key Plan



# Unit 013

## 1 Bedroom | Typical Level 2-8

Level 2-8  
Unit No.013

1  
Bedroom

2  
Bathrooms

Indoor  
Living Area

575.01  
Sq.ft

Outdoor  
Living Area

178.57  
Sq.ft

Total  
Living Area

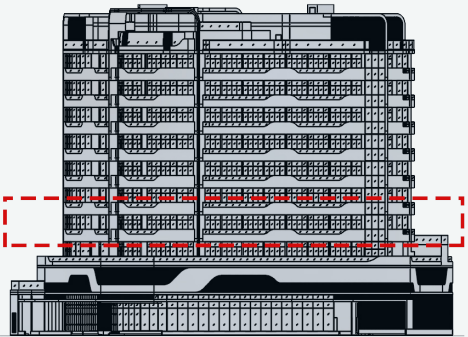
753.58  
Sq.ft

REEM

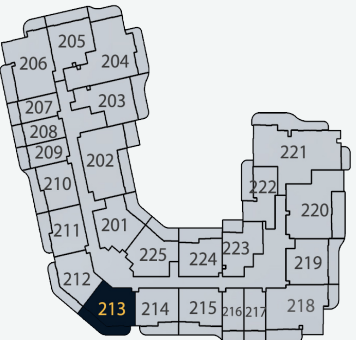
BY VISION

DISCLAIMER  
All measurements are indicative and are for marketing purposes only. All efforts have been made to ensure their accuracy, however these layouts are subject to change at the discretion of the developer and should not be relied upon as final. The actual area may vary from the stated area and the developer reserves the right to make the revisions/alterations at its absolute discretion, without any liability whatsoever.

Floor Plan



Key Elevation



Key Plan

# Unit 014

## 1 Bedroom | Typical Level 2-8

Level 2-8  
Unit No.014

1  
Bedroom

2  
Bathrooms

Indoor  
Living Area

537.12  
Sq.ft

Outdoor  
Living Area

146.93  
Sq.ft

Total  
Living Area

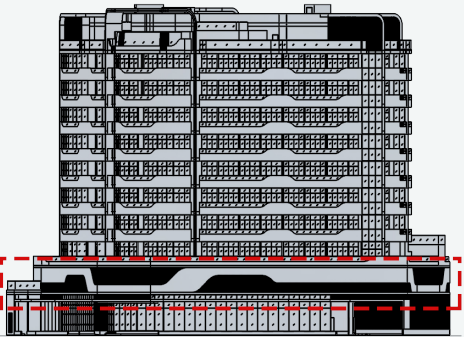
684.05  
Sq.ft

REEM

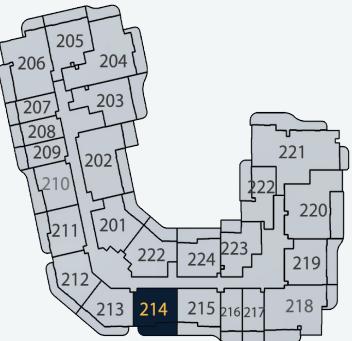
BY VISION

DISCLAIMER  
All measurements are indicative and are for marketing purposes only. All efforts have been made to ensure their accuracy, however these layouts are subject to change at the discretion of the developer and should not be relied upon as final. The actual area may vary from the stated area and the developer reserves the right to make the revisions/alterations at its absolute discretion, without any liability whatsoever.

Floor Plan



Key Elevation



Key Plan



Unit 015

1 Bedroom | Typical Level 2-8

Level 2-8  
Unit No.015

1  
Bedroom

2  
Bathrooms

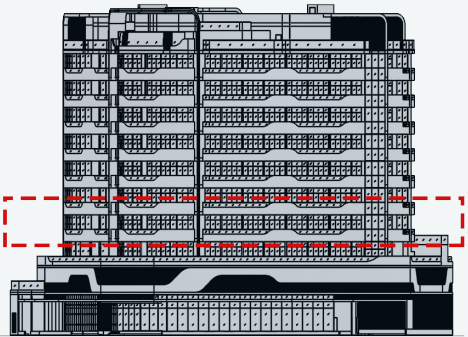
Indoor Living Area	Outdoor Living Area	Total Living Area
537.87 Sq.ft	170.29 Sq.ft	708.16 Sq.ft

REEM

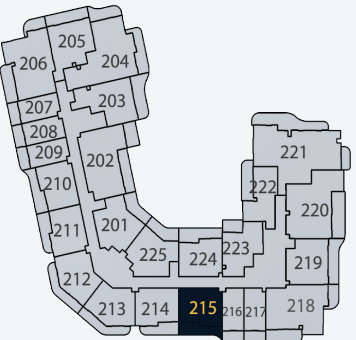
BY VISION

DISCLAIMER  
All measurements are indicative and are for marketing purposes only. All efforts have been made to ensure their accuracy, however these layouts are subject to change at the discretion of the developer and should not be relied upon as final. The actual area may vary from the stated area and the developer reserves the right to make the revisions/alterations at its absolute discretion, without any liability whatsoever.

Floor Plan



Key Elevation



Key Plan

Unit 016

Studio | Typical Level 2-8

Level 2-8  
Unit No.016

1  
Kitchen

1  
Bathroom

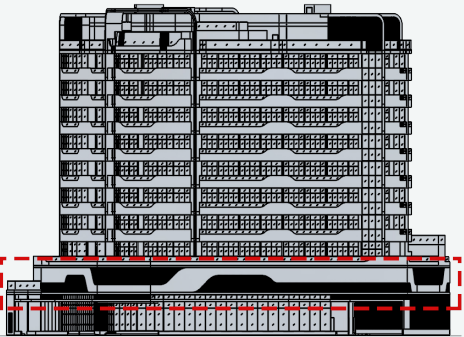
Indoor Living Area	Outdoor Living Area	Total Living Area
317.00 Sq.ft	82.24 Sq.ft	399.23 Sq.ft

REEM

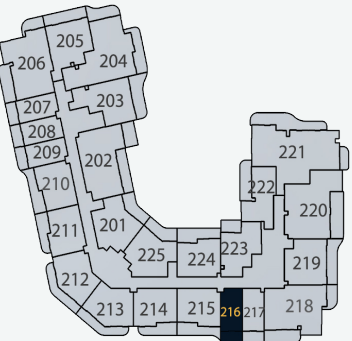
BY VISION

DISCLAIMER  
All measurements are indicative and are for marketing purposes only. All efforts have been made to ensure their accuracy, however these layouts are subject to change at the discretion of the developer and should not be relied upon as final. The actual area may vary from the stated area and the developer reserves the right to make the revisions/alterations at its absolute discretion, without any liability whatsoever.

Floor Plan



Key Elevation



Key Plan



Unit 017

Studio | Typical Level 2-8

Level 2-8  
Unit No.017

1  
Bedroom

1  
Bathroom

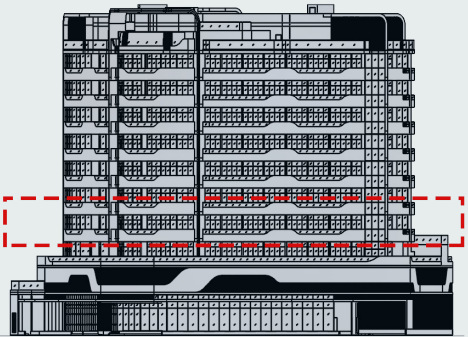
Indoor Living Area	Outdoor Living Area	Total Living Area
317.00 Sq.ft	83.21 Sq.ft	400.20 Sq.ft

REEM

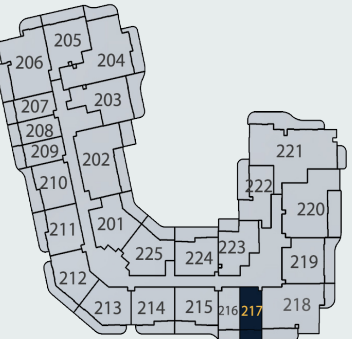
BY VISION

DISCLAIMER  
All measurements are indicative and are for marketing purposes only. All efforts have been made to ensure their accuracy, however these layouts are subject to change at the discretion of the developer and should not be relied upon as final. The actual area may vary from the stated area and the developer reserves the right to make the revisions/alterations at its absolute discretion, without any liability whatsoever.

Floor Plan



Key Elevation



Key Plan

Unit 018

2 Bedroom | Typical Level 2-8

Level 2-8  
Unit No.018

2  
Bedroom

3  
Bathrooms

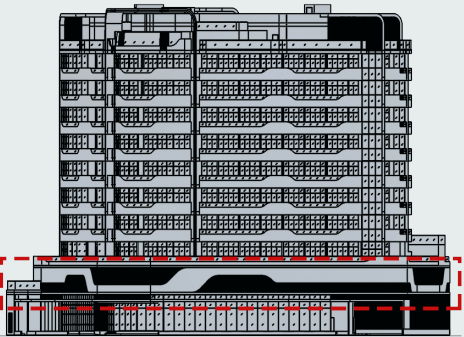
Indoor Living Area	Outdoor Living Area	Total Living Area
940.23 Sq.ft	244.99 Sq.ft	1185.21 Sq.ft

REEM

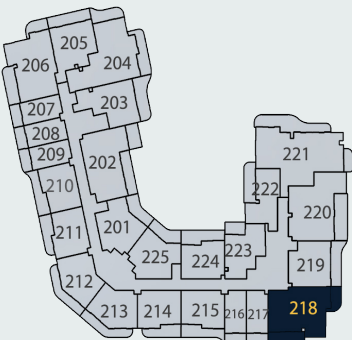
BY VISION

DISCLAIMER  
All measurements are indicative and are for marketing purposes only. All efforts have been made to ensure their accuracy, however these layouts are subject to change at the discretion of the developer and should not be relied upon as final. The actual area may vary from the stated area and the developer reserves the right to make the revisions/alterations at its absolute discretion, without any liability whatsoever.

Floor Plan



Key Elevation



Key Plan



# Unit 019

## 1 Bedroom | Typical Level 2-8

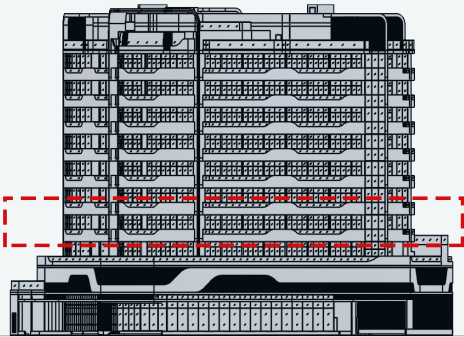
Level 2-8 Unit No.019	1 Bedroom	2 Bathrooms
Indoor Living Area  635.29 Sq.ft	Outdoor Living Area  181.16 Sq.ft	Total Living Area  816.44 Sq.ft

REEM

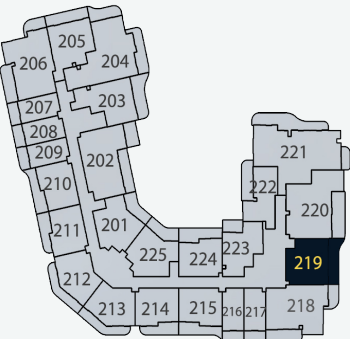
BY VISION

DISCLAIMER  
All measurements are indicative and are for marketing purposes only. All efforts have been made to ensure their accuracy, however these layouts are subject to change at the discretion of the developer and should not be relied upon as final. The actual area may vary from the stated area and the developer reserves the right to make the revisions/alterations at its absolute discretion, without any liability whatsoever.

Floor Plan



Key Elevation



Key Plan

# Unit 020

## 2 Bedroom | Typical Level 2-8

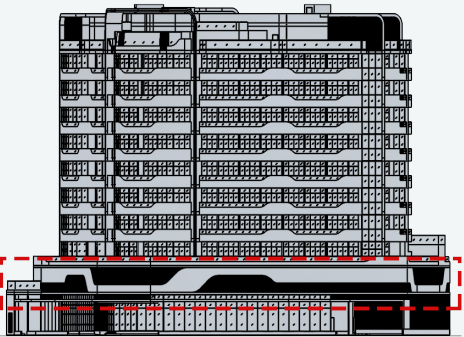
Level 2-8 Unit No.020	2 Bedroom	3 Bathrooms
Indoor Living Area  1045.61 Sq.ft	Outdoor Living Area  218.29 Sq.ft	Total Living Area  1263.90 Sq.ft

REEM

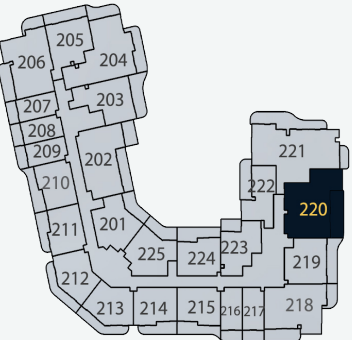
BY VISION

DISCLAIMER  
All measurements are indicative and are for marketing purposes only. All efforts have been made to ensure their accuracy, however these layouts are subject to change at the discretion of the developer and should not be relied upon as final. The actual area may vary from the stated area and the developer reserves the right to make the revisions/alterations at its absolute discretion, without any liability whatsoever.

Floor Plan



Key Elevation



Key Plan



# Unit 021

## 3 Bedroom | Typical Level 2-8

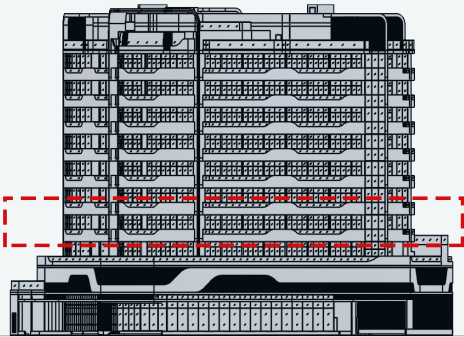
Level 2-8 Unit No.021	3 Bedroom	4 Bathrooms
Indoor Living Area	Outdoor Living Area	Total Living Area
1397.59 Sq.ft	389.65 Sq.ft	1787.24 Sq.ft

REEM

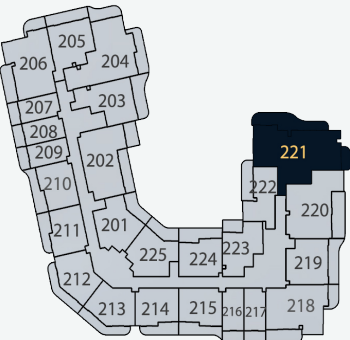
BY VISION

DISCLAIMER  
All measurements are indicative and are for marketing purposes only. All efforts have been made to ensure their accuracy, however these layouts are subject to change at the discretion of the developer and should not be relied upon as final. The actual area may vary from the stated area and the developer reserves the right to make the revisions/alterations at its absolute discretion, without any liability whatsoever.

Floor Plan



Key Elevation



Key Plan

# Unit 022

## 1 Bedroom | Typical Level 2-8

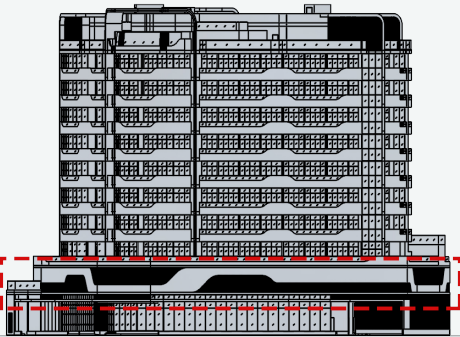
Level 2-8 Unit No.022	1 Bedroom	2 Bathrooms
Indoor Living Area	Outdoor Living Area	Total Living Area
536.15 Sq.ft	165.12 Sq.ft	701.27 Sq.ft

REEM

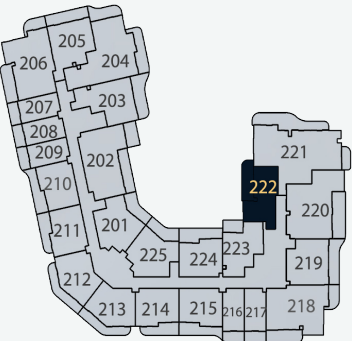
BY VISION

DISCLAIMER  
All measurements are indicative and are for marketing purposes only. All efforts have been made to ensure their accuracy, however these layouts are subject to change at the discretion of the developer and should not be relied upon as final. The actual area may vary from the stated area and the developer reserves the right to make the revisions/alterations at its absolute discretion, without any liability whatsoever.

Floor Plan



Key Elevation



Key Plan



# Unit 023

## 1 Bedroom | Typical Level 2-8

Level 2-8  
Unit No.023

1  
Bedroom

2  
Bathrooms

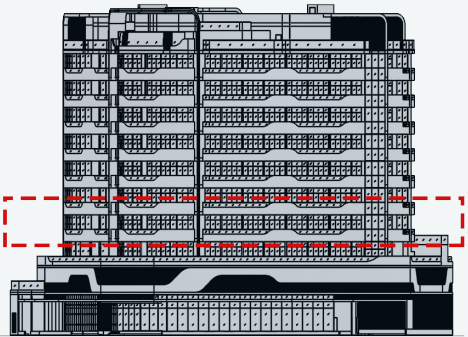
Indoor Living Area	Outdoor Living Area	Total Living Area
585.13 Sq.ft	87.73 Sq.ft	672.85 Sq.ft

REEM

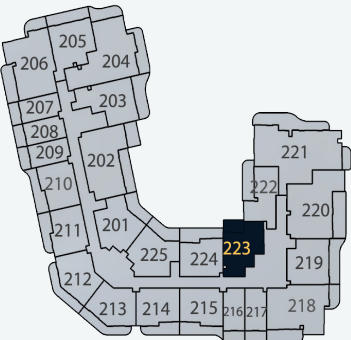
BY VISION

DISCLAIMER  
All measurements are indicative and are for marketing purposes only. All efforts have been made to ensure their accuracy, however these layouts are subject to change at the discretion of the developer and should not be relied upon as final. The actual area may vary from the stated area and the developer reserves the right to make the revisions/alterations at its absolute discretion, without any liability whatsoever.

Floor Plan



Key Elevation



Key Plan

# Unit 024

## 1 Bedroom | Typical Level 2-8

Level 2-8  
Unit No.024

1  
Bedroom

2  
Bathrooms

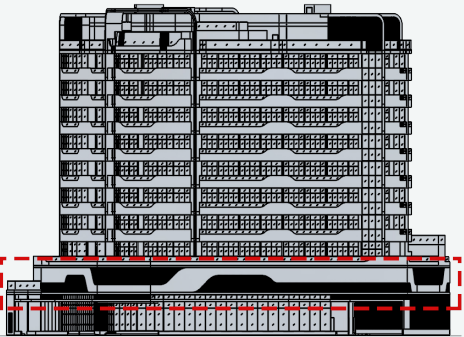
Indoor Living Area	Outdoor Living Area	Total Living Area
538.63 Sq.ft	189.12 Sq.ft	727.75 Sq.ft

REEM

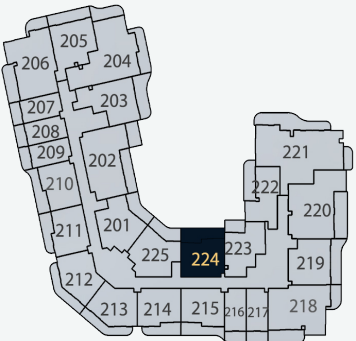
BY VISION

DISCLAIMER  
All measurements are indicative and are for marketing purposes only. All efforts have been made to ensure their accuracy, however these layouts are subject to change at the discretion of the developer and should not be relied upon as final. The actual area may vary from the stated area and the developer reserves the right to make the revisions/alterations at its absolute discretion, without any liability whatsoever.

Floor Plan



Key Elevation



Key Plan



# Unit 025

## 1 Bedroom | Typical Level 2-8

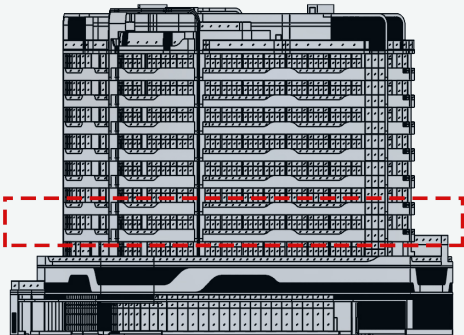
Level 2-8 Unit No.025	1 Bedroom	2 Bathrooms
Indoor Living Area  637.44 Sq.ft	Outdoor Living Area  144.34 Sq.ft	Total Living Area  781.78 Sq.ft



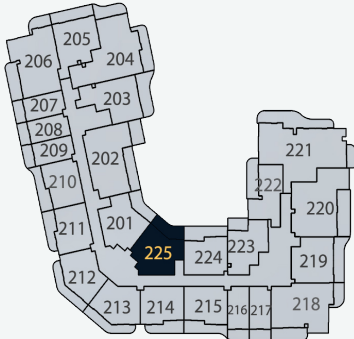
# REEM

BY VISION

DISCLAIMER  
All measurements are indicative and are for marketing purposes only. All efforts have been made to ensure their accuracy, however these layouts are subject to change at the discretion of the developer and should not be relied upon as final. The actual area may vary from the stated area and the developer reserves the right to make the revisions/ alterations at its absolute discretion, without any liability whatsoever.



Key Elevation



Key Plan



