



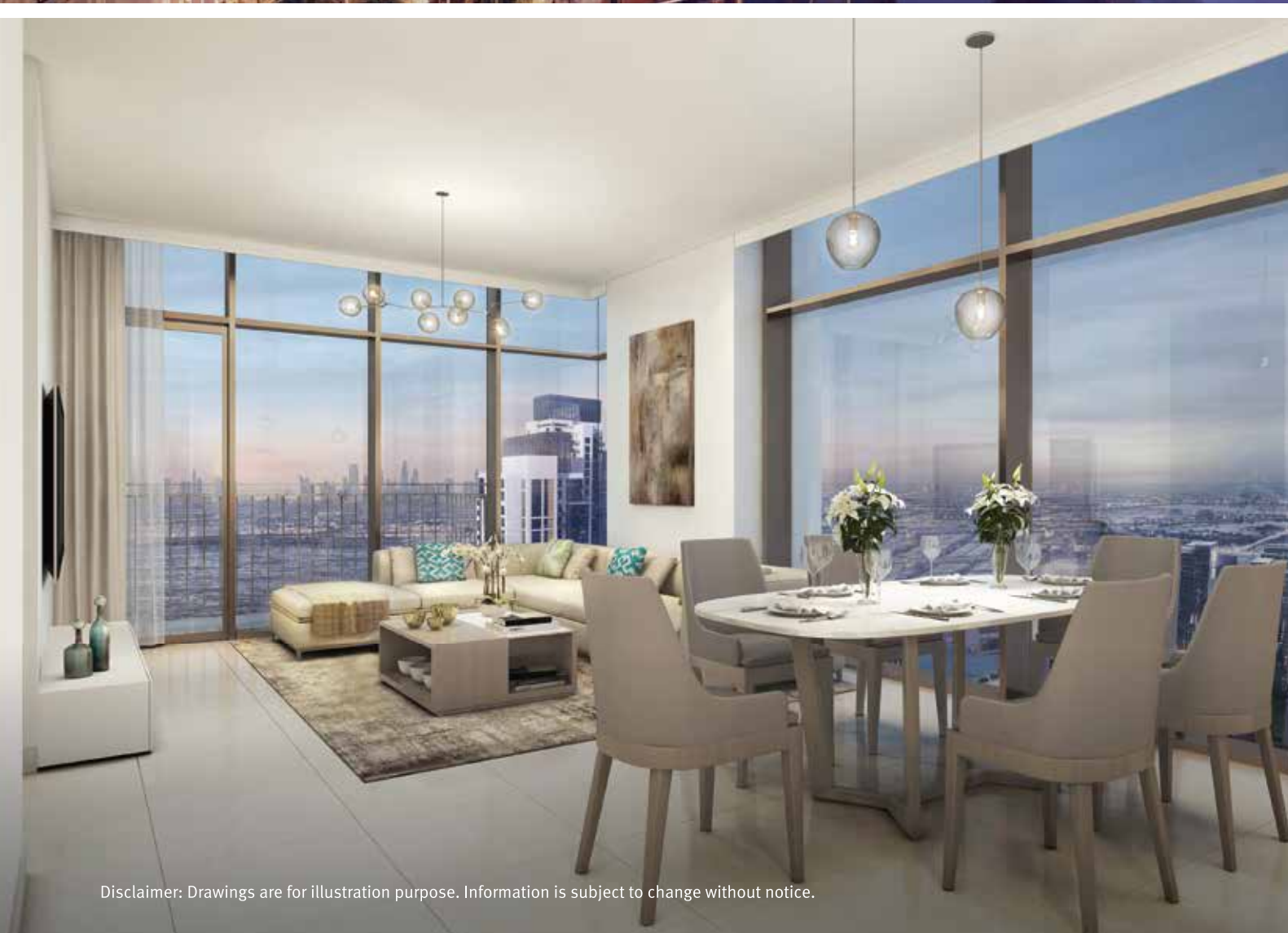
CREEKSIDE 18

THE FLOOR PLANS

خور دبي
DUBAI CREEK HARBOUR

الخيران
THE LAGOONS





Disclaimer: Drawings are for illustration purpose. Information is subject to change without notice.



Launching on Saturday 12 September on a first-come, first-served basis

Dubai: Dubai Creek Harbour Sales Centre from 10am
Doha: W Hotel from 9am

For more information on Creekside 18,
please visit Emaar Pavilion between
Sunday and Thursday from 9am – 6pm

Or call 800 36227 (UAE) +971 4 366 1688 (International)

دُور دُبي
DUBAI CREEK HARBOUR



دُور دُبي
DUBAI CREEK HARBOUR

CREEKSIDE 18
THE ISLAND DISTRICT





DUBAI CREEK HARBOUR

Dubai Creek Harbour at The Lagoons is a joint venture between Emaar Properties and Dubai Holding. This brand new city, planned on an open site will combine city living with the natural contours of the creek.

The masterplan is an order of magnitude almost three times larger than Downtown Dubai and will support its commercial and cultural development, creating a new Dubai that will leapfrog many of the world's other global cities.

THE ISLAND DISTRICT

From the edge of the waterfront, the Island District extends itself into the heart of the creek, providing residents with unrivalled views of Dubai's soaring skyline across the calm and cooling water of the inlet.

With its own intimately scaled promenade, this residential and tourism district nourishes a sense of community as well as creating a rich waterfront experience through a range of recreational activities and attractions. With a stunning yacht club, world-class marina and harbour, and the urban flourish of its residential communities, hotels, retail and restaurants the Island District will be a lifestyle destination like no other.

CREEKSIDE 18

Extending into the heart of the creek, the stunning Creekside 18 comprises of two towers 37 storeys high with 480 residential one, two and three bedroom apartments, plus an additional level of podium apartments.

Both towers are designed to take full advantage of the vibrant skyline views and within close proximity to the bird sanctuary and luscious green mangroves.

With its polished, timeless aesthetic and elegant clean lines Creekside 18 showcases Emaar's uncompromising creative vision and pursuit of perfection.

DEVELOPMENT SPECIFICATIONS

1. Two towers at G+ 37
2. 480 residential units
3. One, two and three bedroom apartments
4. Annex tower comprising 32 levels
5. Additional level of podium apartments

TARGET

Creekside 18 is targeted at national and international investors looking to own property within this ultra world-class development, professionals and high net worth individuals, families, couples, and single professionals.

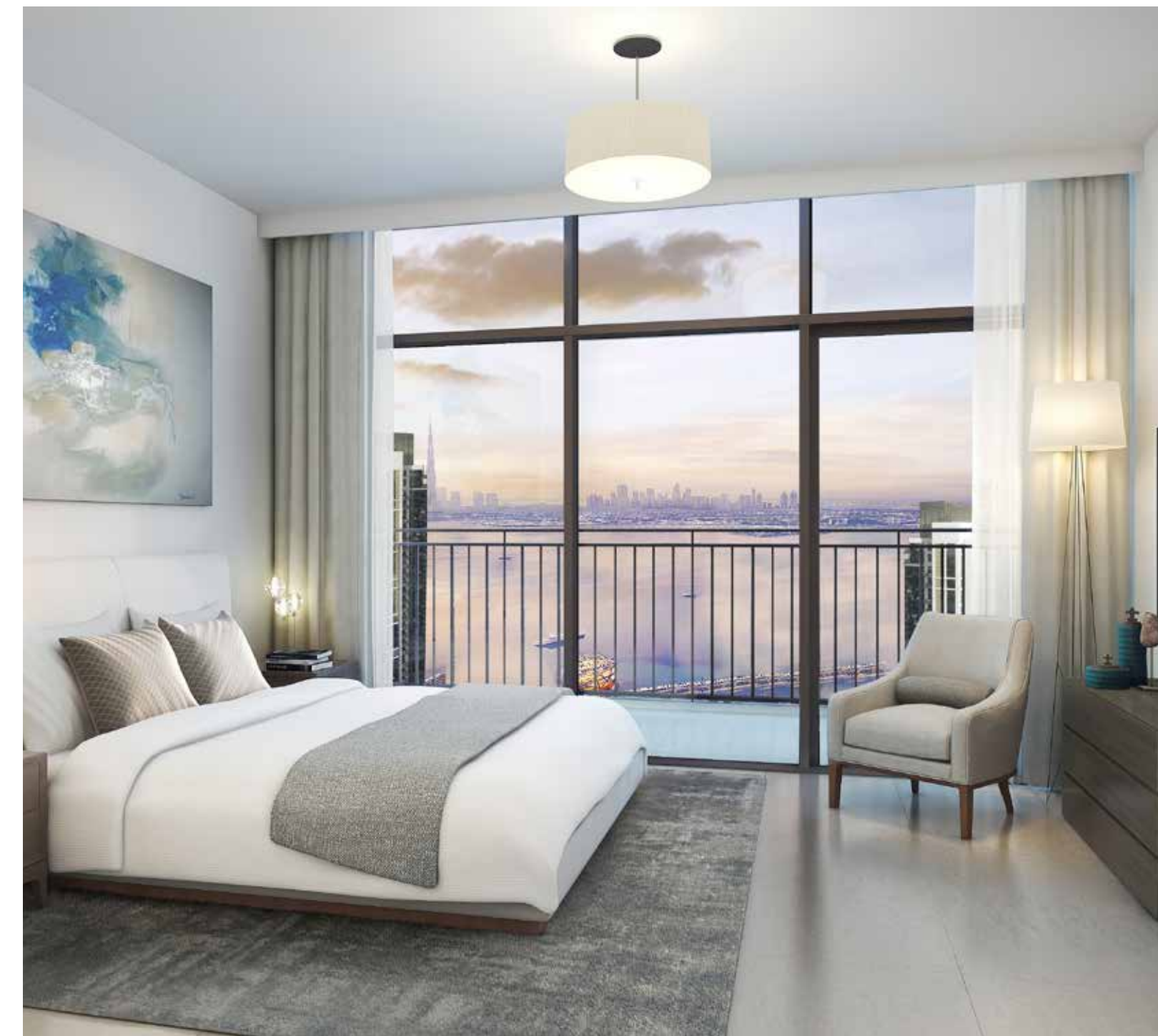
INTERIORS

Layouts have been precisely designed to allow for comfortable living and dining spaces with spacious and relaxing bedrooms. The interiors take advantage of the views and light to enhance a luxurious lifestyle.

Cream colored tile floors run through the apartments, setting a neutral background to receive subdued patterns and colors of waterfront living. The walls are of a neutral paint with toned wall covering for those meticulously chosen accent walls.

The kitchens are fully equipped with neutral tone finishing and stone countertops.

Bathrooms follow the same principle with neutral coloured tile floors and walls accentuated by marble stone countertops, luxurious mirrors and attractive fittings and taps.



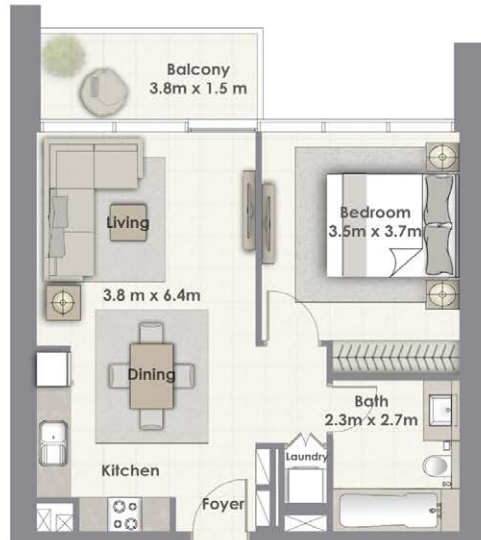
CREEK SIDE 18

Tower A

1. All materials, dimensions & drawings are approximate. 2. Information is subject to change without notice.
3. Actual suite area may vary from the stated area. 4. Drawings not to scale.
5. The developer reserves the right to make revisions/alterations without any liability whatsoever.

CREEKSIDE 18

Type 1



1 BEDROOM W / BALCONY TOWER A UNIT 01 / LEVEL 2-16, 18-33

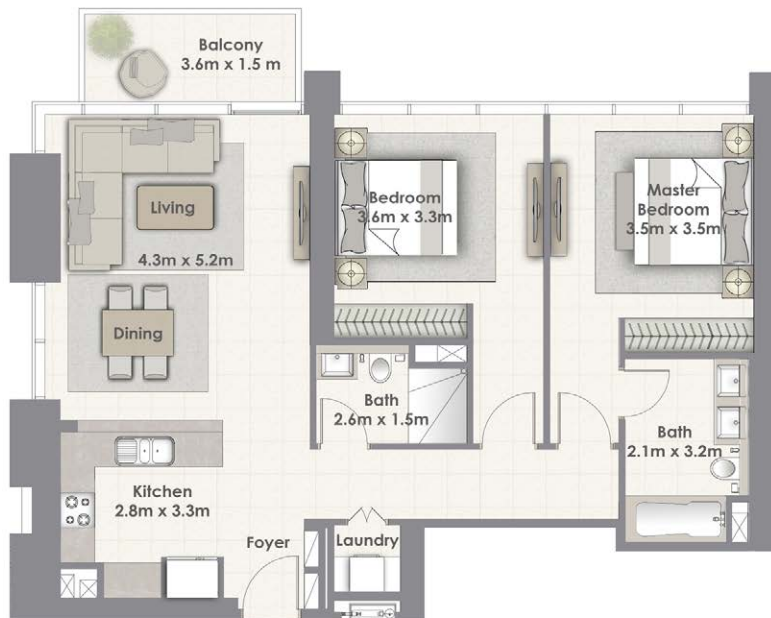
Suite Area	611.00 Sq.ft. / 56.74 Sq.m.
Balcony Area	69.00 Sq.ft. / 6.38 Sq.m.
Total Area	680.00 Sq.ft. / 63.12 Sq.m.



1. All materials, dimensions & drawings are approximate. 2. Information is subject to change without notice.
3. Actual suite area may vary from the stated area. 4. Drawings not to scale.
5. The developer reserves the right to make revisions/alterations without any liability whatsoever.

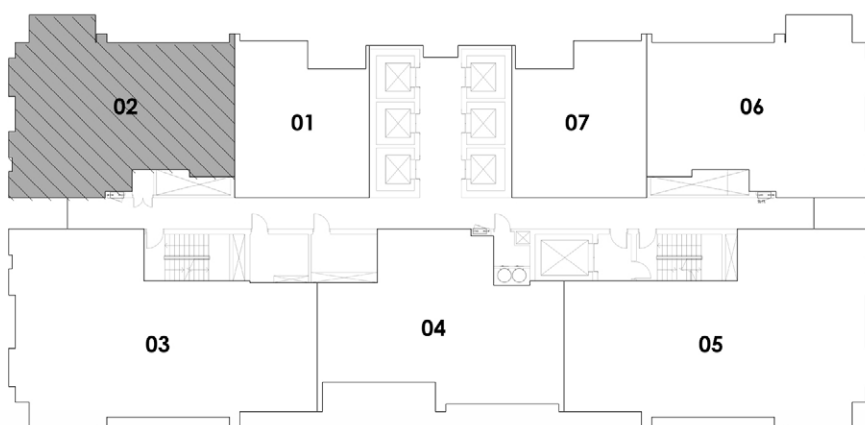
CREEKSIDE 18

Type 2



2 BEDROOM W / BALCONY TOWER A UNIT 02 / LEVEL 2-16, 18-33

Suite Area	1071.00 Sq.ft. / 99.54 Sq.m.
Balcony Area	63.00 Sq.ft. / 5.86 Sq.m.
Total Area	1134.00 Sq.ft. / 105.40 Sq.m.



1. All materials, dimensions & drawings are approximate. 2. Information is subject to change without notice.
3. Actual suite area may vary from the stated area. 4. Drawings not to scale.
5. The developer reserves the right to make revisions/alterations without any liability whatsoever.

CREEKSIDE 18

Type 3



3 BEDROOM W / BALCONY TOWER A UNIT 03 / LEVEL 2-16, 18-33

Suite Area	1481.00 Sq.ft. / 137.63 Sq.m.
Balcony Area	150.00 Sq.ft. / 13.97 Sq.m.
Total Area	1631.00 Sq.ft. / 151.60 Sq.m.



1. All materials, dimensions & drawings are approximate. 2. Information is subject to change without notice.
3. Actual suite area may vary from the stated area. 4. Drawings not to scale.
5. The developer reserves the right to make revisions/alterations without any liability whatsoever.

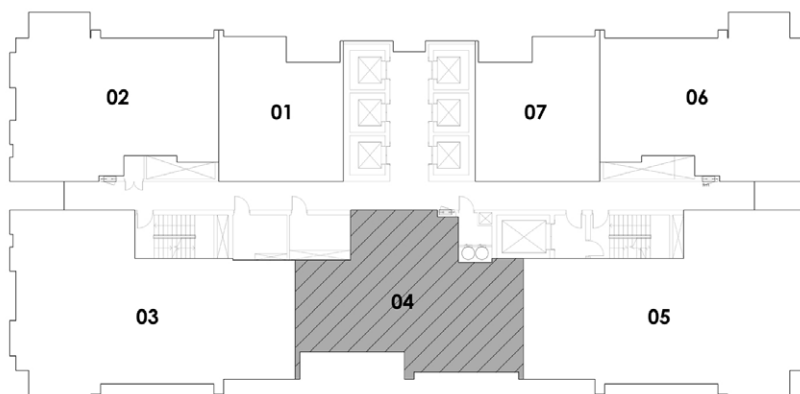
CREEKSIDE 18

Type 4



2 BEDROOM W / BALCONY TOWER A UNIT 04 / LEVEL 2-16, 18-33

Suite Area	1013.00 Sq.ft. / 94.09 Sq.m.
Balcony Area	120.00 Sq.ft. / 11.18 Sq.m.
Total Area	1133.00 Sq.ft. / 105.27 Sq.m.



1. All materials, dimensions & drawings are approximate. 2. Information is subject to change without notice.
3. Actual suite area may vary from the stated area. 4. Drawings not to scale.
5. The developer reserves the right to make revisions/alterations without any liability whatsoever.

CREEKSIDE 18

Type 5



3 BEDROOM W / BALCONY TOWER A UNIT 05 / LEVEL 2-16, 18-33

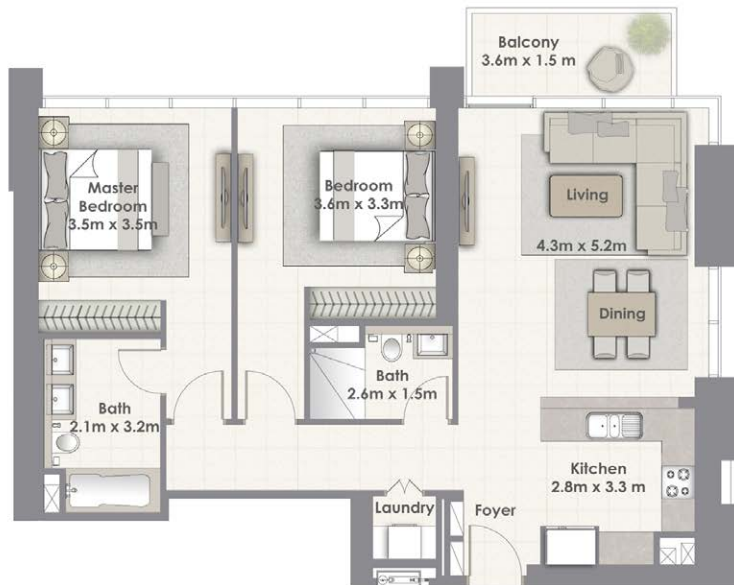
Suite Area	1480.00 Sq.ft. / 137.48 Sq.m.
Balcony Area	150.00 Sq.ft. / 13.97 Sq.m.
Total Area	1630.00 Sq.ft. / 151.45 Sq.m.



1. All materials, dimensions & drawings are approximate. 2. Information is subject to change without notice.
3. Actual suite area may vary from the stated area. 4. Drawings not to scale.
5. The developer reserves the right to make revisions/alterations without any liability whatsoever.

CREEKSIDE 18

Type 6



2 BEDROOM W / BALCONY TOWER A UNIT 06 / LEVEL 2-16, 18-33

Suite Area 1070.00 Sq.ft. / 99.39 Sq.m.
Balcony Area 63.00 Sq.ft. / 5.86 Sq.m.
Total Area 1133.00 Sq.ft. / 105.25 Sq.m.



1. All materials, dimensions & drawings are approximate. 2. Information is subject to change without notice.
3. Actual suite area may vary from the stated area. 4. Drawings not to scale.
5. The developer reserves the right to make revisions/alterations without any liability whatsoever.

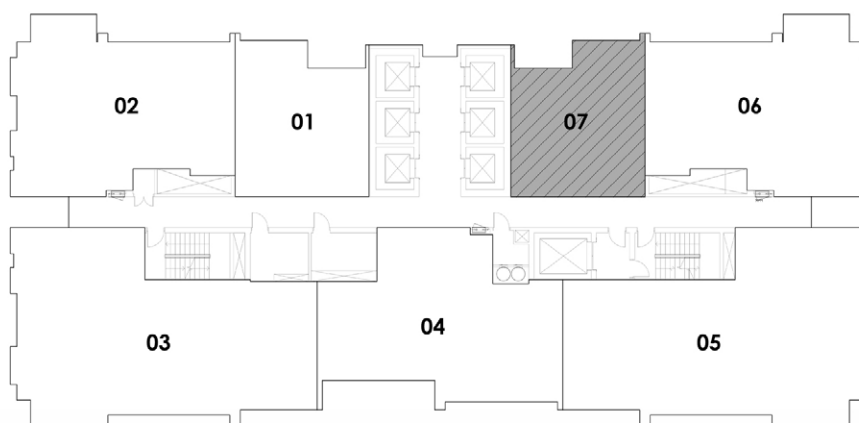
CREEKSIDE 18

Type 7



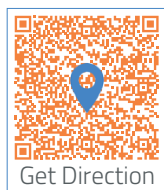
1 BEDROOM W / BALCONY TOWER A UNIT 07 / LEVEL 2-16, 18-33

Suite Area	611.00 Sq.ft. / 56.74 Sq.m.
Balcony Area	69.00 Sq.ft. / 6.38 Sq.m.
Total Area	680.00 Sq.ft. / 63.12 Sq.m.



1. All materials, dimensions & drawings are approximate. 2. Information is subject to change without notice.
3. Actual suite area may vary from the stated area. 4. Drawings not to scale.
5. The developer reserves the right to make revisions/alterations without any liability whatsoever.

CONTACT DETAILS



Head Office

Tel: 02 205 2999

Tel: 600 548 200

P.O.BOX 109537, Abu Dhabi, UAE

Abu Dhabi Al Muhairy Centre, M Level

Al Khalidiyah, Abu Dhabi, United Arab Emirates

www.propertyshopinvestment.com

info@psinv.net



Al Reem Island Office

Amaya Tower, G Floor, Al Reem Island,
Shams Abu Dhabi, United Arab Emirates