



Barari Park View

by Al-Mawared.ae



**UNPARALLELED
LIVING EXPERIENCE**



AN OASIS IN THE HEART OF DUBAI

BARARI PARKVIEW OFFERS THE PERFECT BALANCE BETWEEN CITY LIVING AND A CALM, NATURAL ENVIRONMENT, IT IS YOUR PEACEFUL GETAWAY IN THE HEART OF DUBAI.

IT'S A SANCTUARY WHERE YOU CAN UNWIND AND RELAX, WHILE STILL BEING CLOSE TO THE PULSE OF THE CITY.









Al Mawared
Properties







BUILDING FACTS

PROPERTY TYPE

RESIDENTIAL AND RETAIL

PLOT AREA

5,825.04 M² / 62,700.21 Ft²

NUMBER OF UNITS

RESIDENTIAL

196 UNITS

SHOPS

4 UNITS

TOTAL UNITS

1 BEDROOM

135 UNITS

2 BEDROOM

53 UNITS

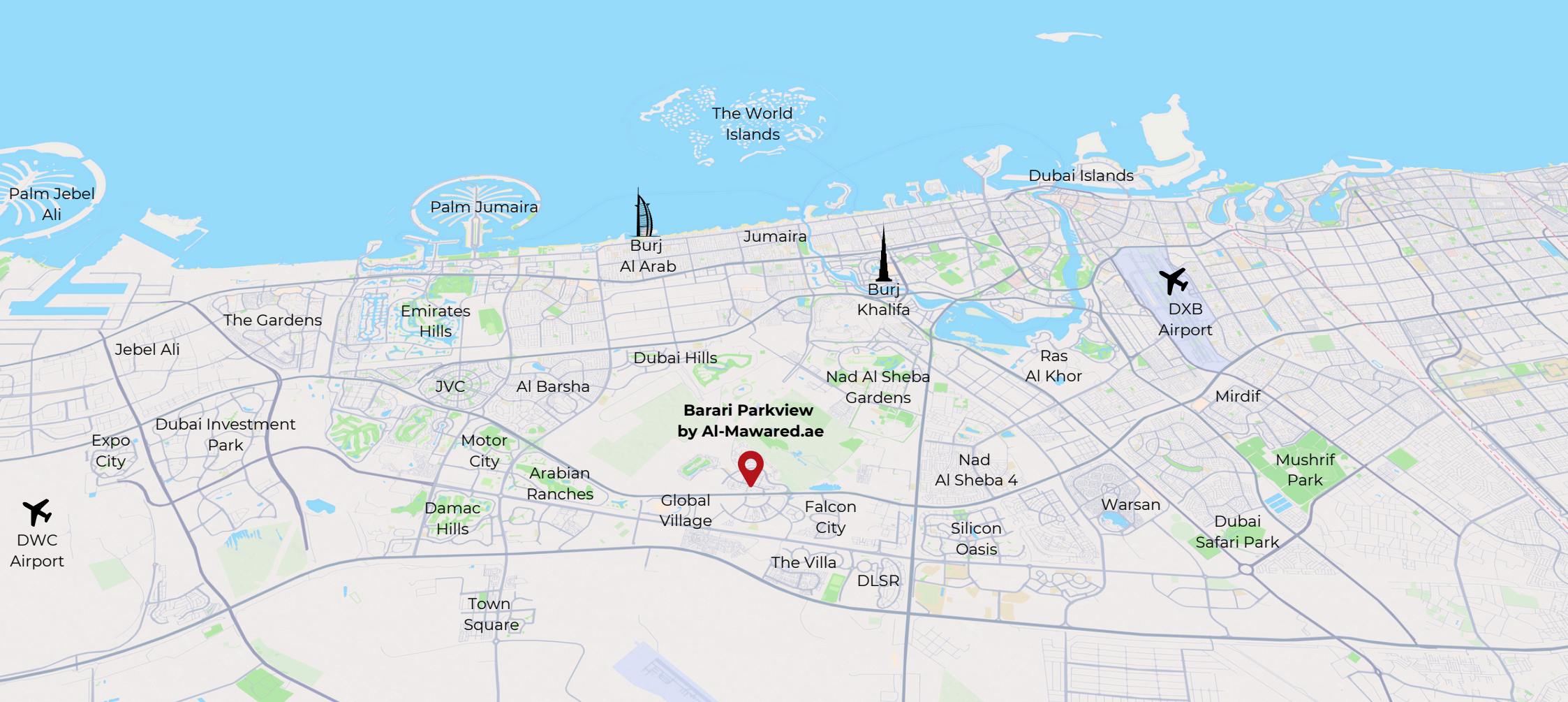
3 BEDROOM

4 UNITS

PENTHOUSE

3 UNITS





05 Minutes

Global Village

01 Minutes

Dunecrest American School

20 Minutes

Dubai Mall & Burj Khalifa

15 Minutes

Ras Al Khor Wildlife Sanctuary

15 Minutes

Maydan Racecourse

20 Minutes

Museum of the Future

15 Minutes

Dubai International Financial Centre

15 Minutes

Dubai World Trade Centre

20 Minutes

Palm Jumeira

20 Minutes

Emirates Golf Club

20 Minutes

Dubai International Airport

20 Minutes

Dubai World Central Airport



Al Mawared
Properties







UNMATCHED AMENITIES FOR A LIFESTYLE OF LEISURE AND WELLNESS

EXPERIENCE A RANGE OF THOUGHTFULLY DESIGNED AMENITIES AT BARARI PARKVIEW, FROM A ROOFTOP INFINITY POOL AND OUTDOOR CINEMA TO A HEALTH CLUB, YOGA LAWN, AND SMART HOME FEATURES. WHETHER YOU'RE SEEKING RELAXATION OR RECREATION, THERE'S SOMETHING FOR EVERY LIFESTYLE.



HEALTH CLUB



OUTDOOR CINEMA



ROOFTOP INFINITY SWIMMING POOL



KIDS PLAY AREA



KIDS SWIMMING POOL



RUNNING TRACK



ENTERTAINMENT ROOM



YOGA LAWN



SMART HOME



LEISURE POOL DECK



SEATING AREA



SAUNA ROOM



STEAM ROOM



PADDLE COURT



CHESS PLAY AREA



TABLE TENNIS



VR GOLF



CYCLE TRACK



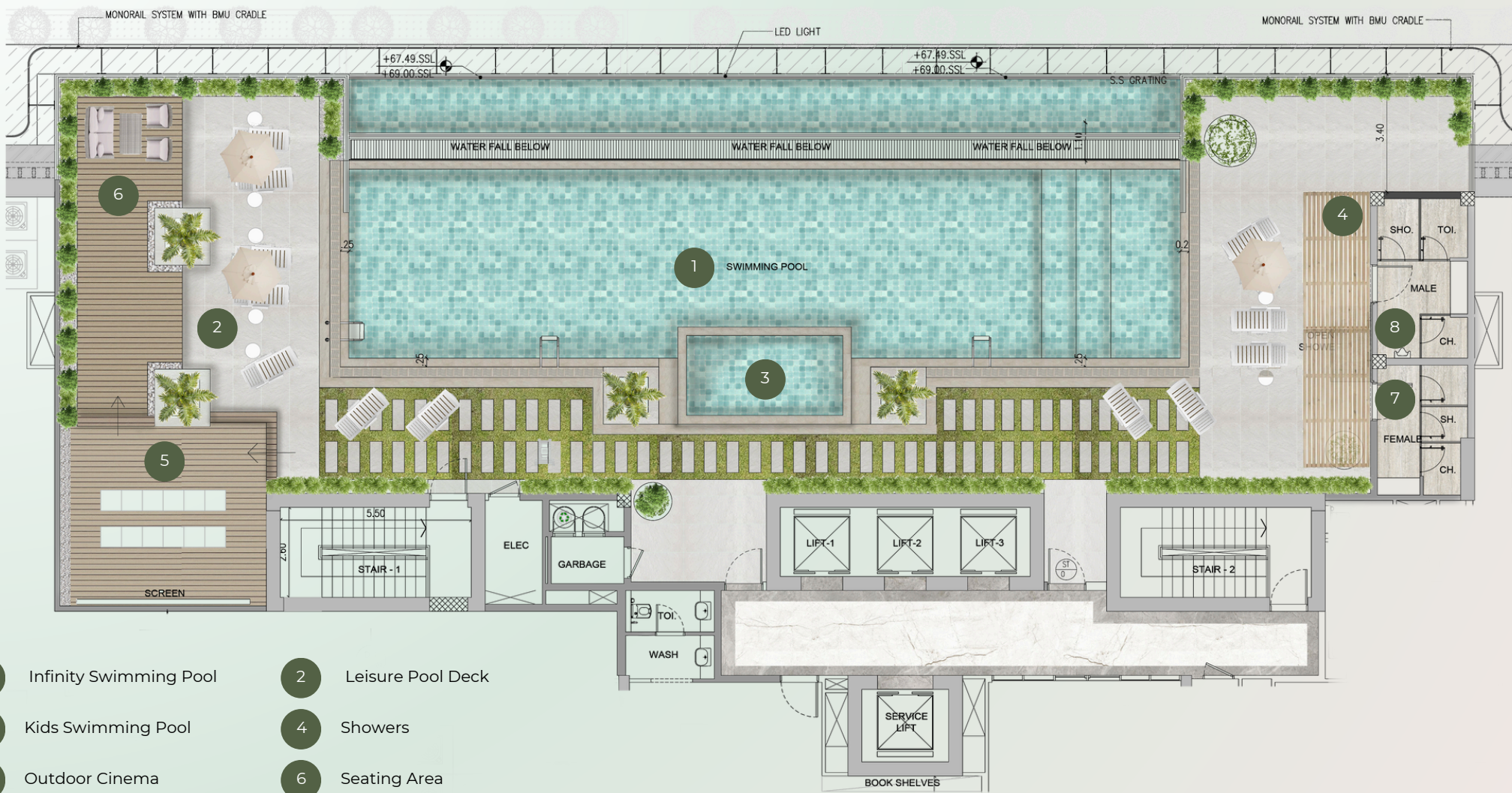
**STATE OF THE ART
ROOF TOP HEALTH
CLUB**



- | | | | |
|---|-----------------|---|-----------------|
| 1 | Paddle Court | 2 | Seating Area |
| 3 | Yoga Lawn | 4 | Chess Play Area |
| 5 | Kids Playground | 6 | Running Track |

First Floor Outdoor Amenities

Disclaimer: 1. All room dimensions are measured to structural elements, excluding wall finishes and construction tolerances. 2. Dimensions have been provided by our consultant architects. 3. All materials, dimensions, and drawings are approximate and subject to change without notice. 4. Actual suite area may vary from the stated area. Drawings are not to scale. The developer reserves the right to make revisions. 5. Suite area is calculated using the centerline of demising/partition walls separating units, the exterior face of exterior walls, and the corridor wall adjacent to the unit. 6. Balcony area is measured from the centerline of demising/partition walls, the outermost face of the enclosing guard, and the exterior face of adjoining balconies. 8. Unit measurements are based on typical floor plans. Column sizes may vary between floors. 9. Unit sizes and details may differ slightly between unit types. Please refer to the sales and purchase agreement for the exact size of your specific unit.



Zen Floor Outdoor Amenities

Disclaimer: 1. All room dimensions are measured to structural elements, excluding wall finishes and construction tolerances. 2. Dimensions have been provided by our consultant architects. 3. All materials, dimensions, and drawings are approximate and subject to change without notice. 4. Actual suite area may vary from the stated area. Drawings are not to scale. The developer reserves the right to make revisions. 5. Suite area is calculated using the centerline of demising/partition walls separating units, the exterior face of exterior walls, and the corridor wall adjacent to the unit. 6. Balcony area is measured from the centerline of demising/partition walls, the outermost face of the enclosing guard, and the exterior face of adjoining balconies. 8. Unit measurements are based on typical floor plans. Column sizes may vary between floors. 9. Unit sizes and details may differ slightly between unit types. Please refer to the sales and purchase agreement for the exact size of your specific unit.





Al Mawared
Properties



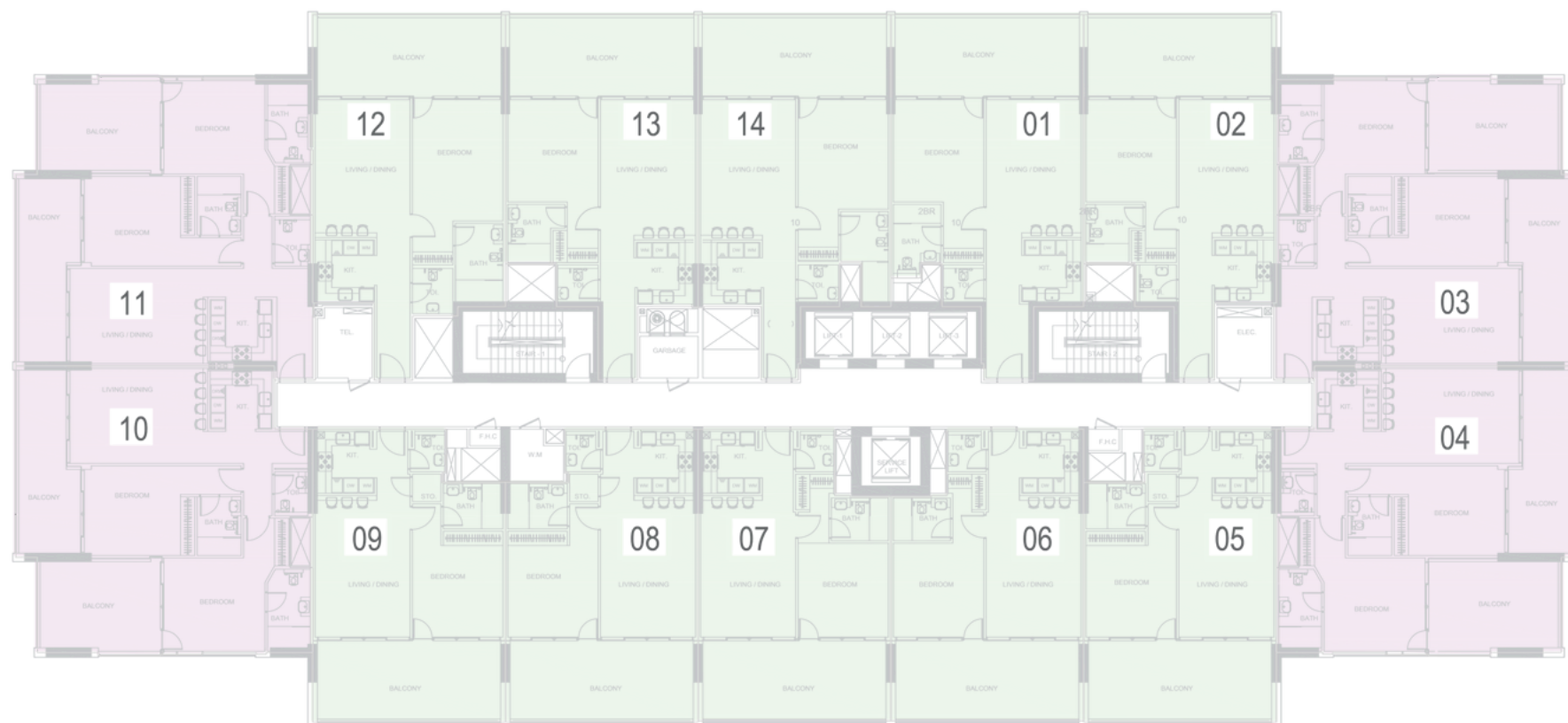
BARARI PARK
VIEW



Disclaimer: 1. All room dimensions are measured to structural elements, excluding wall finishes and construction tolerances. 2. Dimensions have been provided by our consultant architects. 3. All materials, dimensions, and drawings are approximate and subject to change without notice. 4. Actual suite area may vary from the stated area. Drawings are not to scale. The developer reserves the right to make revisions. 5. Suite area is calculated using the centerline of demising/partition walls separating units, the exterior face of exterior walls, and the corridor wall adjacent to the unit. 6. Balcony area is measured from the centerline of demising/partition walls, the outermost face of the enclosing guard, and the exterior face of adjoining balconies. 8. Unit measurements are based on typical floor plans. Column sizes may vary between floors. 9. Unit sizes and details may differ slightly between unit types. Please refer to the sales and purchase agreement for the exact size of your specific unit.



Disclaimer: 1. All room dimensions are measured to structural elements, excluding wall finishes and construction tolerances. 2. Dimensions have been provided by our consultant architects. 3. All materials, dimensions, and drawings are approximate and subject to change without notice. 4. Actual suite area may vary from the stated area. Drawings are not to scale. The developer reserves the right to make revisions. 5. Suite area is calculated using the centerline of demising/partition walls separating units, the exterior face of exterior walls, and the corridor wall adjacent to the unit. 6. Balcony area is measured from the centerline of demising/partition walls, the outermost face of the enclosing guard, and the exterior face of adjoining balconies. 8. Unit measurements are based on typical floor plans. Column sizes may vary between floors. 9. Unit sizes and details may differ slightly between unit types. Please refer to the sales and purchase agreement for the exact size of your specific unit.



FLOOR PLAN



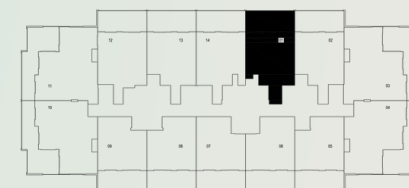
1 BEDROOM APARTMENT



2 BEDROOM APARTMENT



FLOOR PLAN



1 BEDROOM APARTMENT - 01 SERIES

Indoor Living Area

806.21 Sq.ft²

Outdoor Living Area

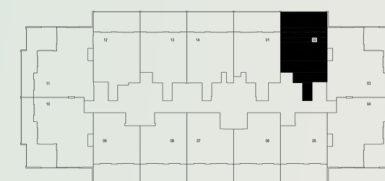
304.40 Sq.ft²

Total Living Area

1110.62 Sq.ft²



FLOOR PLAN



1 BEDROOM APARTMENT - 02 SERIES

Indoor Living Area

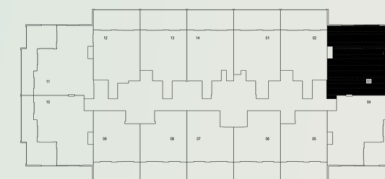
776.72 Sq.ft²

Outdoor Living Area

304.40 Sq.ft²

Total Living Area

1080.69 Sq.ft²



2 BEDROOM APARTMENT - 03 SERIES

Indoor Living Area

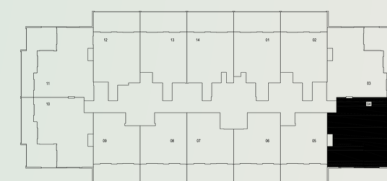
1133.33 Sq.ft²

Outdoor Living Area

493.84 Sq.ft²

Total Living Area

1627.18 Sq.ft²



2 BEDROOM APARTMENT - 04 SERIES

Indoor Living Area

1074.23 Sq.ft²

Outdoor Living Area

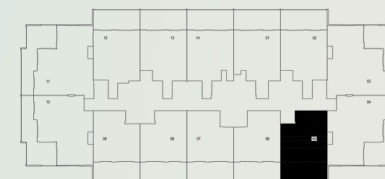
493.74 Sq.ft²

Total Living Area

1567.97 Sq.ft²



FLOOR PLAN



1 BEDROOM APARTMENT - 05 SERIES

Indoor Living Area

709.34 ft²

Outdoor Living Area

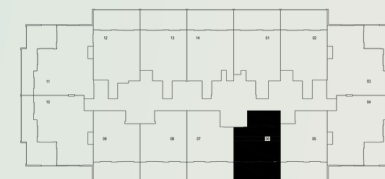
304.29 ft²

Total Living Area

1013.63 ft²



FLOOR PLAN



1 BEDROOM APARTMENT - 06 SERIES

Indoor Living Area

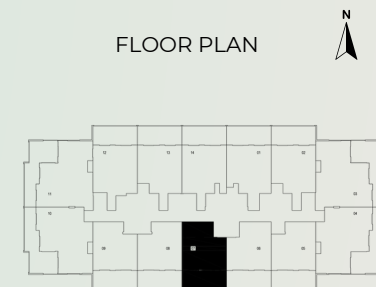
698.47 Sq.ft²

Outdoor Living Area

299.99 Sq.ft²

Total Living Area

998.46 Sq.ft²



1 BEDROOM APARTMENT - 07 SERIES

Indoor Living Area

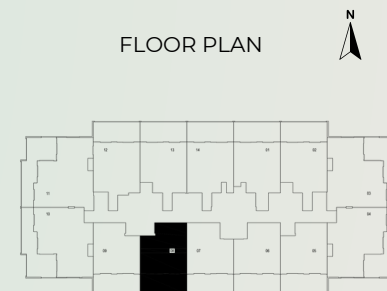
698.47 Sq.ft²

Outdoor Living Area

299.99 Sq.ft²

Total Living Area

998.46 Sq.ft²



1 BEDROOM APARTMENT - 08 SERIES

Indoor Living Area

709.01 Sq.ft²

Outdoor Living Area

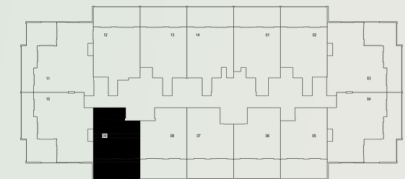
304.29 Sq.ft²

Total Living Area

1013.31 Sq.ft²



FLOOR PLAN



1 BEDROOM APARTMENT - 09 SERIES

Indoor Living Area

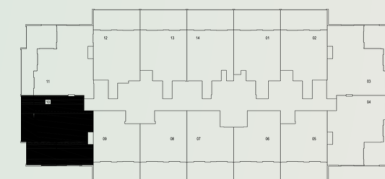
709.01 Sq.ft²

Outdoor Living Area

304.29 Sq.ft²

Total Living Area

1013.31 Sq.ft²



2 BEDROOM APARTMENT - 10 SERIES

Indoor Living Area

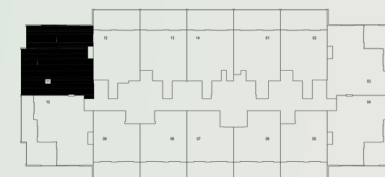
1073.70 Sq.ft²

Outdoor Living Area

442.39 Sq.ft²

Total Living Area

1516.09 Sq.ft²



2 BEDROOM APARTMENT - 11 SERIES

Indoor Living Area

1131.71 Sq.ft²

Outdoor Living Area

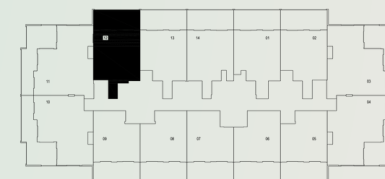
442.39 Sq.ft²

Total Living Area

1574.11 Sq.ft²



FLOOR PLAN



1 BEDROOM APARTMENT - 12 SERIES

Indoor Living Area

823.97 Sq.ft²

Outdoor Living Area

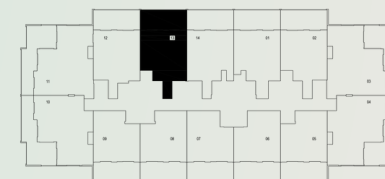
304.40 Sq.ft²

Total Living Area

1128.38 Sq.ft²



FLOOR PLAN



1 BEDROOM APARTMENT - 13 SERIES

Indoor Living Area

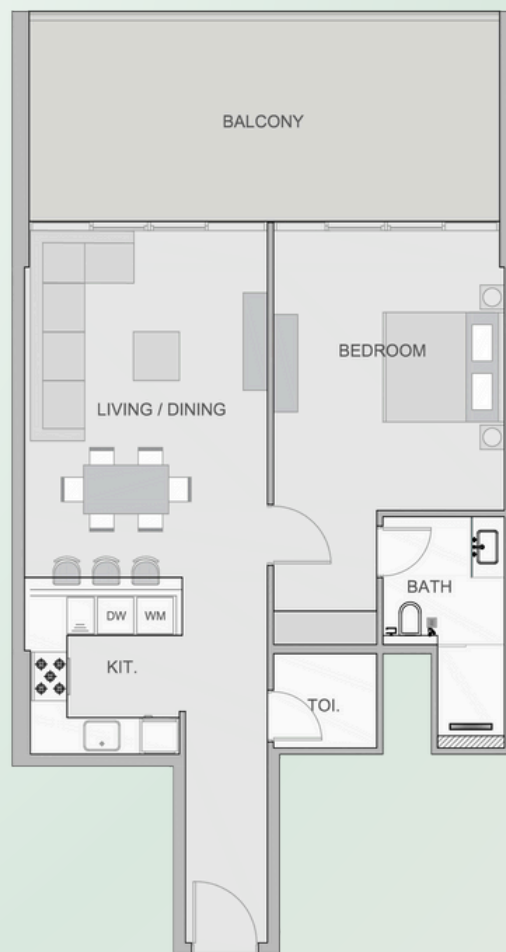
798.68 Sq.ft²

Outdoor Living Area

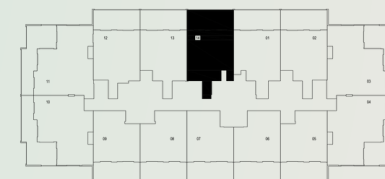
304.40 Sq.ft²

Total Living Area

1083.71 Sq.ft²



FLOOR PLAN



1 BEDROOM APARTMENT - 14 SERIES

Indoor Living Area

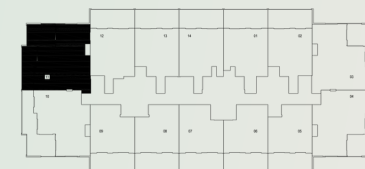
74.56 Sq.ft²

Outdoor Living Area

304.40 Sq.ft²

Total Living Area

1106.96 Sq.ft²



3 BEDROOM APARTMENT

Indoor Living Area

1,517.81 Sq.ft²

Outdoor Living Area

1,116.75 Sq.ft²

Total Living Area

2,634.57 Sq.ft²



Barari Park View

by Al-Mawared.ae

