

DUBAI LAND

**DALMORE**



**fäm**<sup>®</sup> Master  
Agency



A woman with long, wavy brown hair is shown in profile, looking out a large window. She is wearing a light-colored, long-sleeved top and holding a blue mug in her right hand. Her left hand is raised, touching the white curtains. The background outside the window is a blurred view of greenery and a distant cityscape. The lighting is soft and natural, suggesting morning or afternoon. The overall mood is calm and contemplative.

*Designed* to work.

*Delivered* on time.





## *Welcome To* DALMORE TOWER

Dalmore Developments is a hidden gem in Dubai's real estate market, recognized for creating practical, design-focused homes with remarkable delivery speed.

Dalmore stands for comfort, connectivity, and functionality, offering real advantages for both families and investors.



No *Waiting Time*  
Or Delays,

Just Real Homes  
Delivered On  
*Real Timelines*





# Perfectly *Positioned*

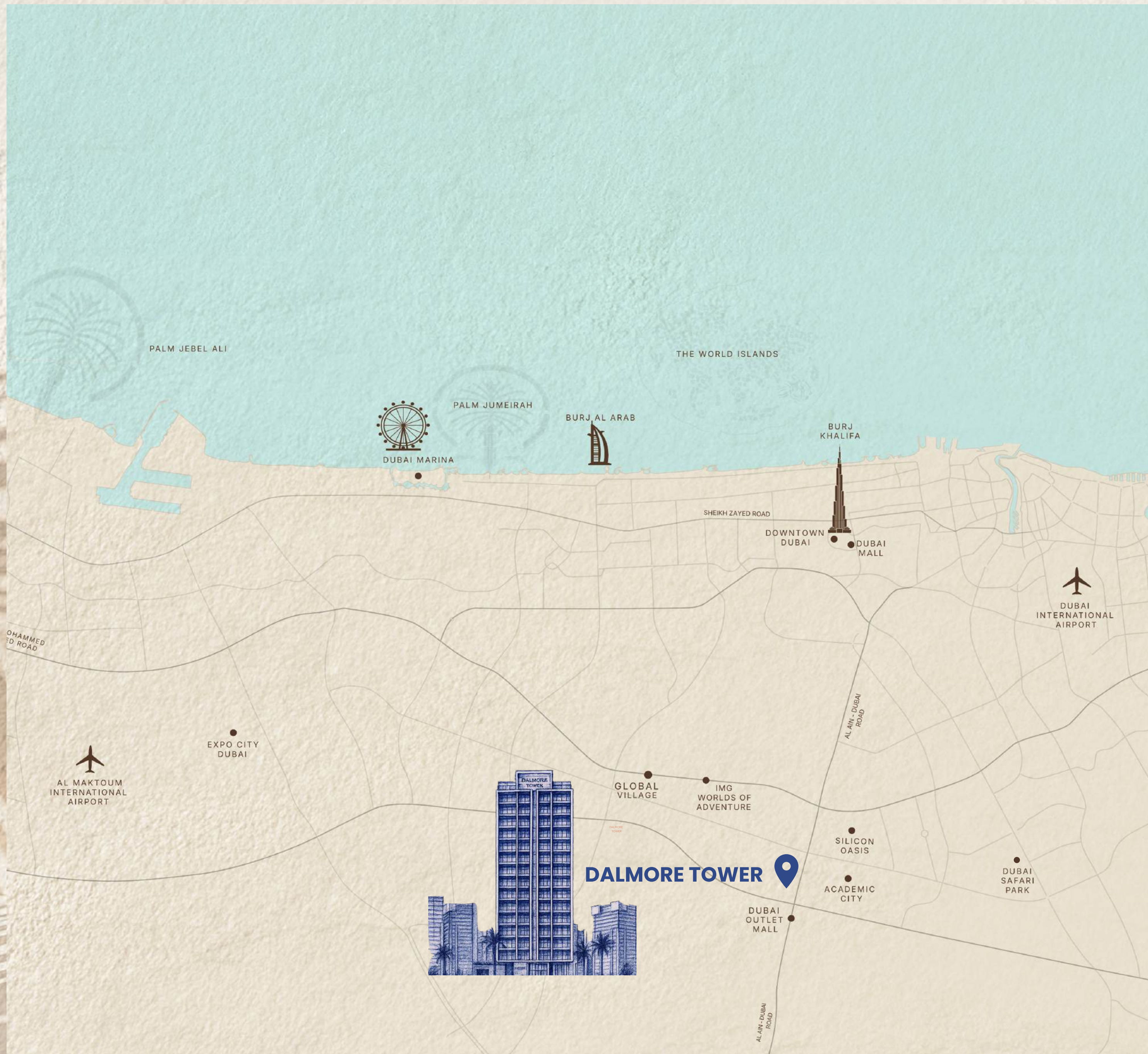
Life runs smoother when everything is within reach. Dalmore Tower offers a location where schools, key roads, and daily essentials are conveniently close, making everyday living more seamless.

**07** Minutes to  
Silicon Oasis

**10** Minutes to  
Dubai Outlet Mall

**20** Minutes to  
Dubai Int' Airport

**30** Minutes to  
Al Maktoum Int' Airport







# DOWNTOWN

## *DUBAI*

Downtown Dubai is a vibrant hub of luxury and culture. It features iconic landmarks like the Burj Khalifa and The Dubai Mall, along with world-class dining and entertainment.

**25** Minutes to  
Downtown Dubai



# *DUBAI* SAFARI PARK

A nearby escape into nature, Dubai Safari Park offers open-air habitats and enriching experiences for families to explore and connect with wildlife.

**15** Minutes to  
Dubai Safari Park







# *GLOBAL* VILLAGE

Conveniently located near Dubailand, Global Village is a vibrant cultural destination in Dubai, featuring pavilions from various countries, live performances, international cuisines, and unique shopping experiences that celebrate the world's rich diversity.

10 Minutes to  
Global Village



# ACADEMIC *CITY*

Just a short distance from Dubailand, Academic City is home to prestigious universities and offers modern facilities, a serene environment, and diverse programmes that foster innovation, collaboration, and personal growth

**05** Minutes to  
Academic City







# Built for Real *Family Living*

Dalmore Tower offers spacious family-friendly layouts with closed kitchens and maid's rooms in 2-bedroom units. Every detail maximizes functionality with no wasted space. Conveniently located near schools and major roads for everyday ease.

0 Minutes to  
being home



Designed for functionality, ready to  
move in *Sooner*

Handover  
Q2 2026



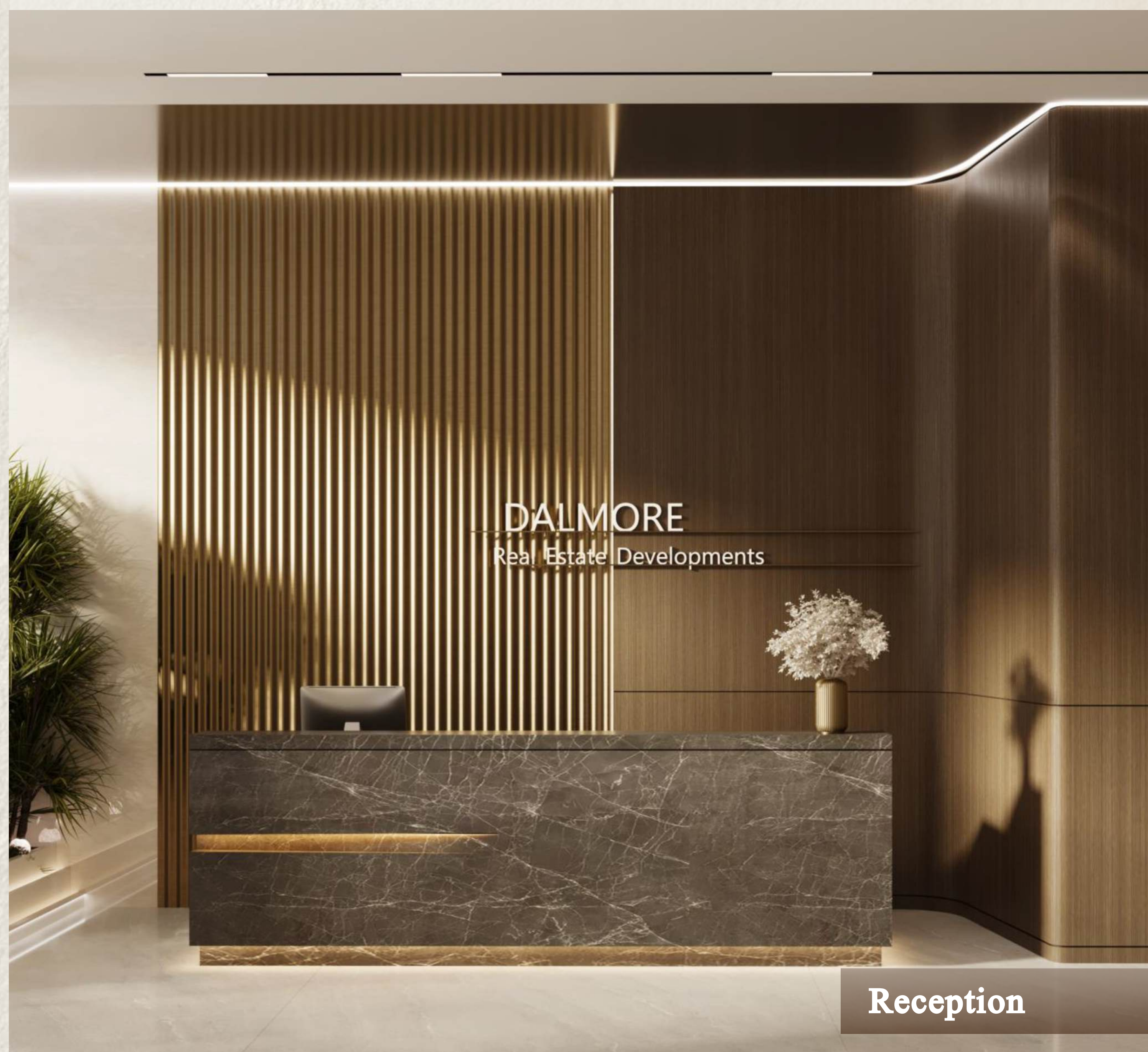
MAIN ENTRANCE



# *Grand Arrival*

Where comfort, design, and  
everyday ease come together

Dalmore Tower offers a grand first impression,  
followed by homes designed for real living:  
spacious layouts, smart storage, and practical  
features that reflect how families truly live today.



**Reception**



An architectural rendering of a modern building entrance at night. The entrance is framed by a series of concentric, glowing white rectangular lines. The top of the building features a grid of blue and white rectangular panels. The entrance itself is a large glass door with a dark frame, revealing a bright interior with a white sofa, a coffee table, and a large potted plant. The word "DALMORE" is written in white capital letters on the left side of the entrance. The foreground is a dark, paved area with some greenery on the left and right sides. The overall atmosphere is modern and sophisticated.

DALMORE

Entrance Canopy





Lobby Area





Lift Lobby



# CORRIDORS



<1210-1215

1205-1210 >

Corridors



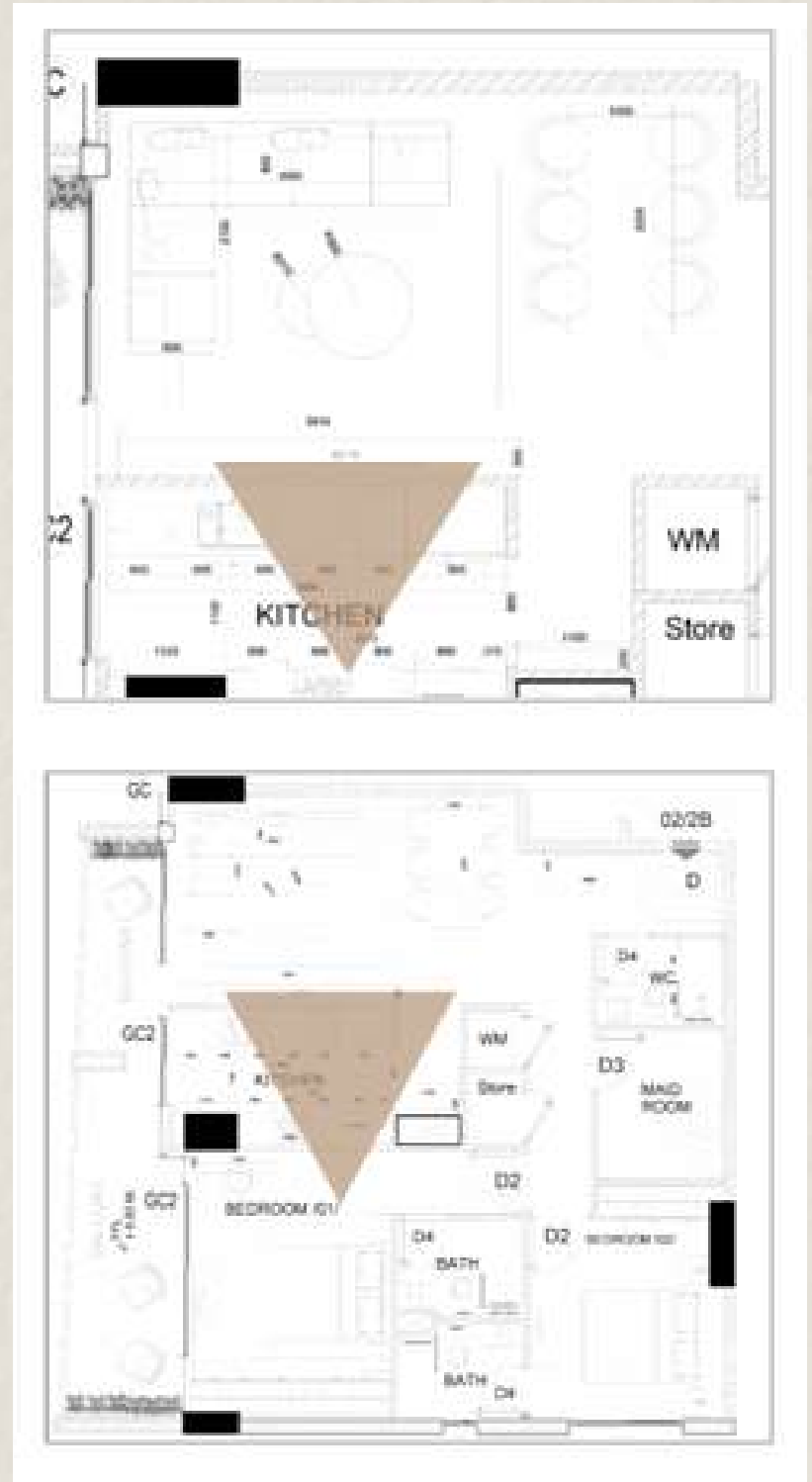


Corridors



## LIVING & DINING AREA





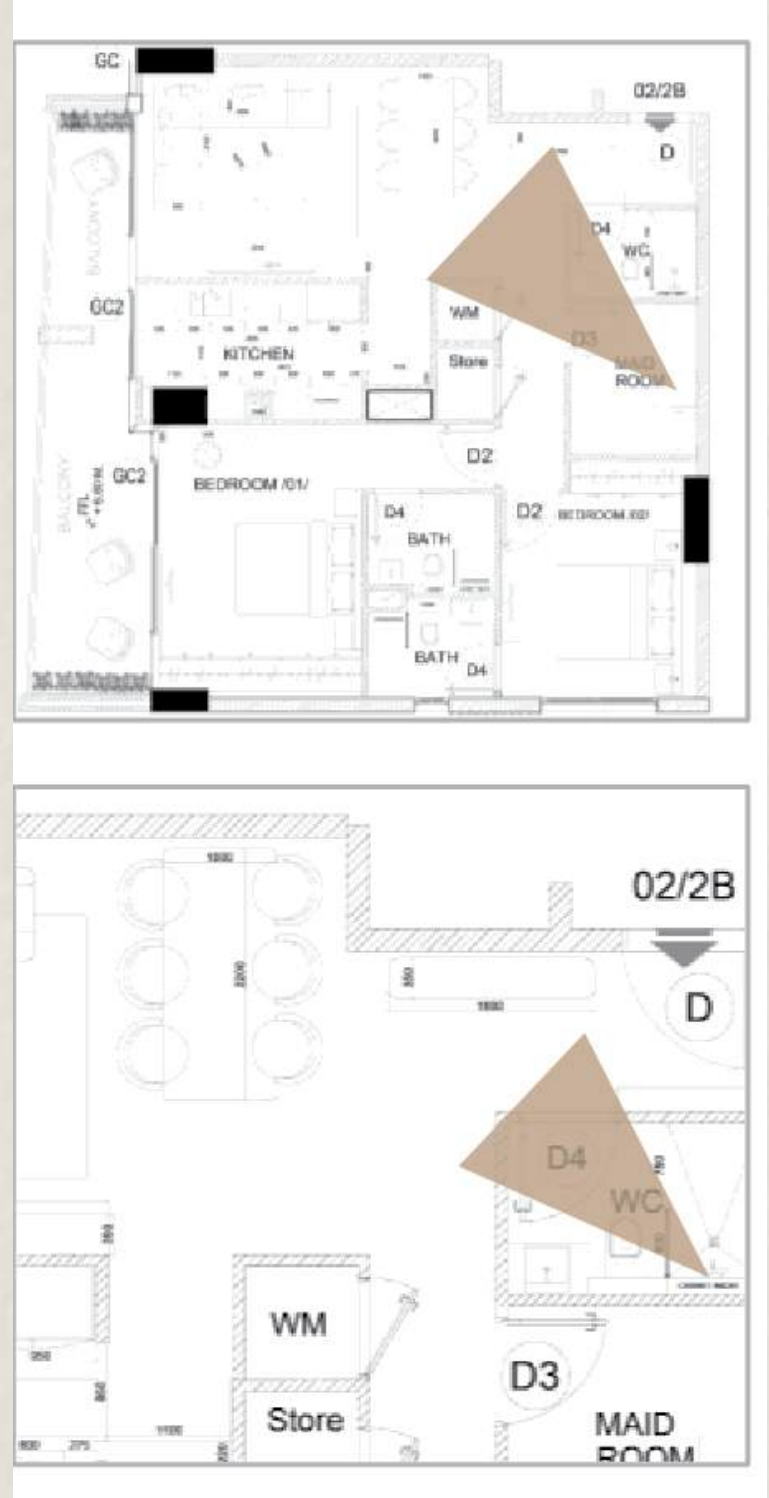
**Living & Dining Area**





**Living & Dining Area**





**Living & Dining Area**



KITCHEN





**Kitchen**





**Kitchen**



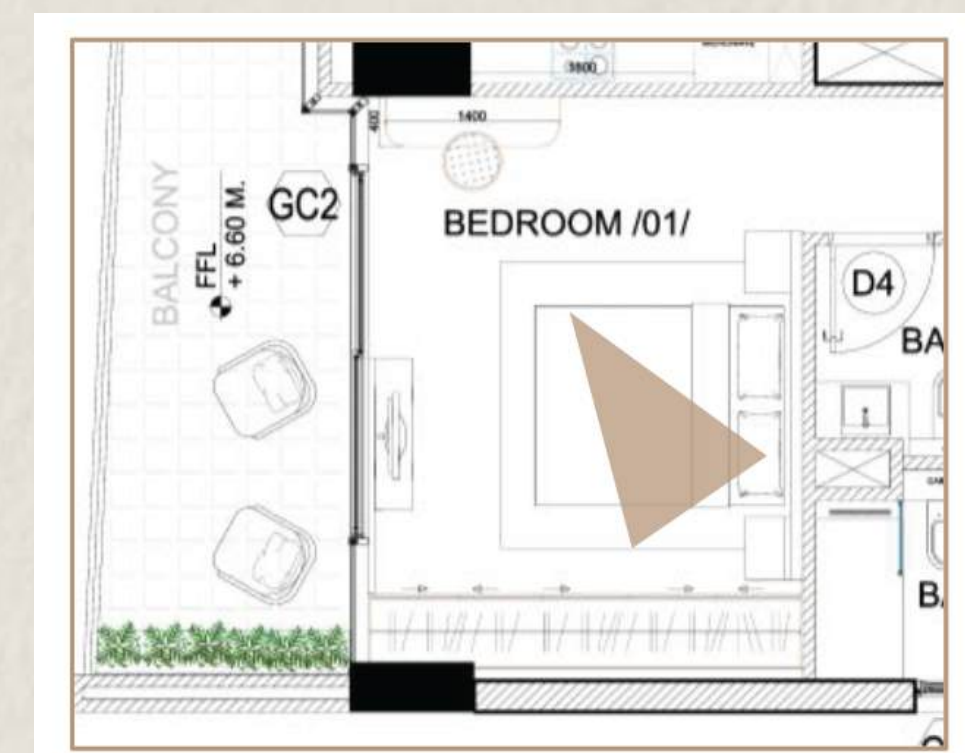
## MASTER BEDROOM





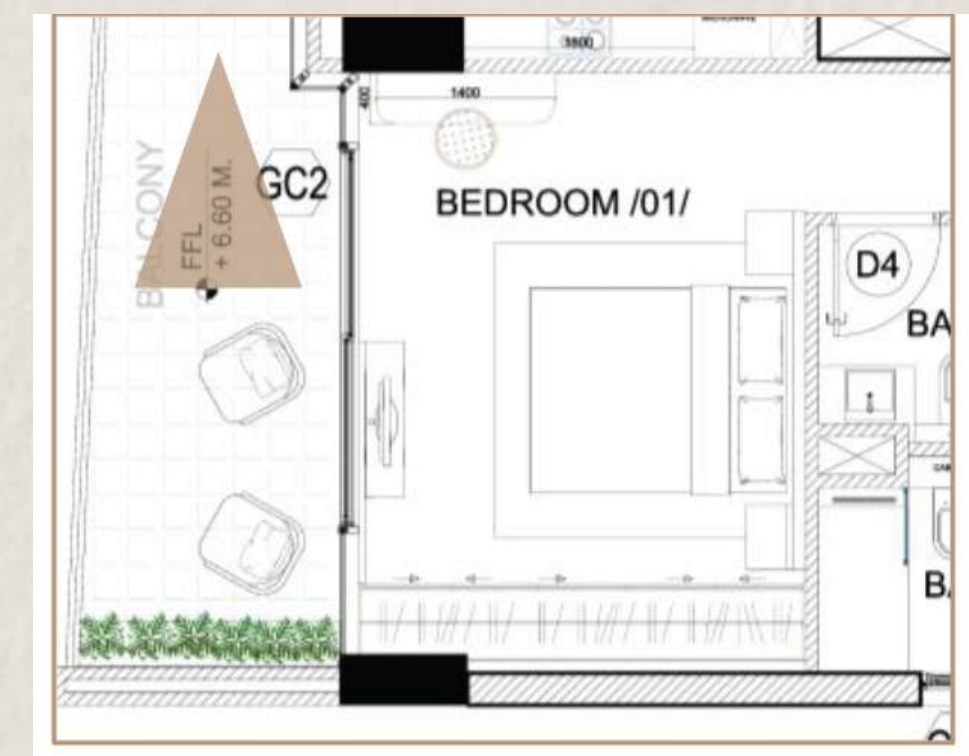
**Master Bedroom**





**Master Bedroom**





**Master Bedroom**



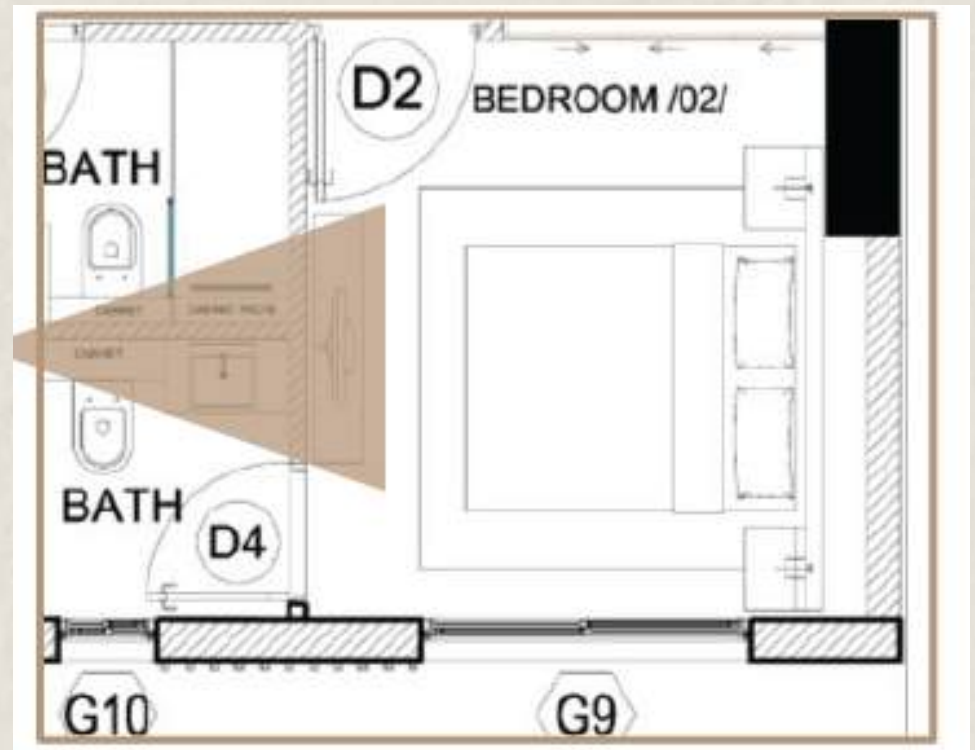


**Master Bedroom**



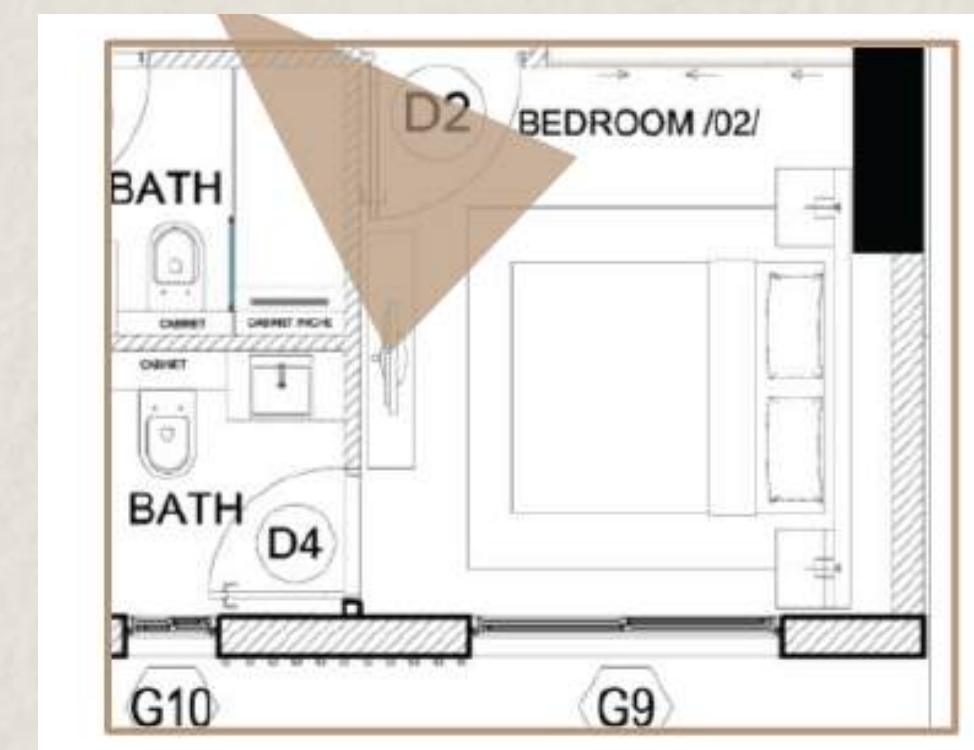
## BEDROOM 2





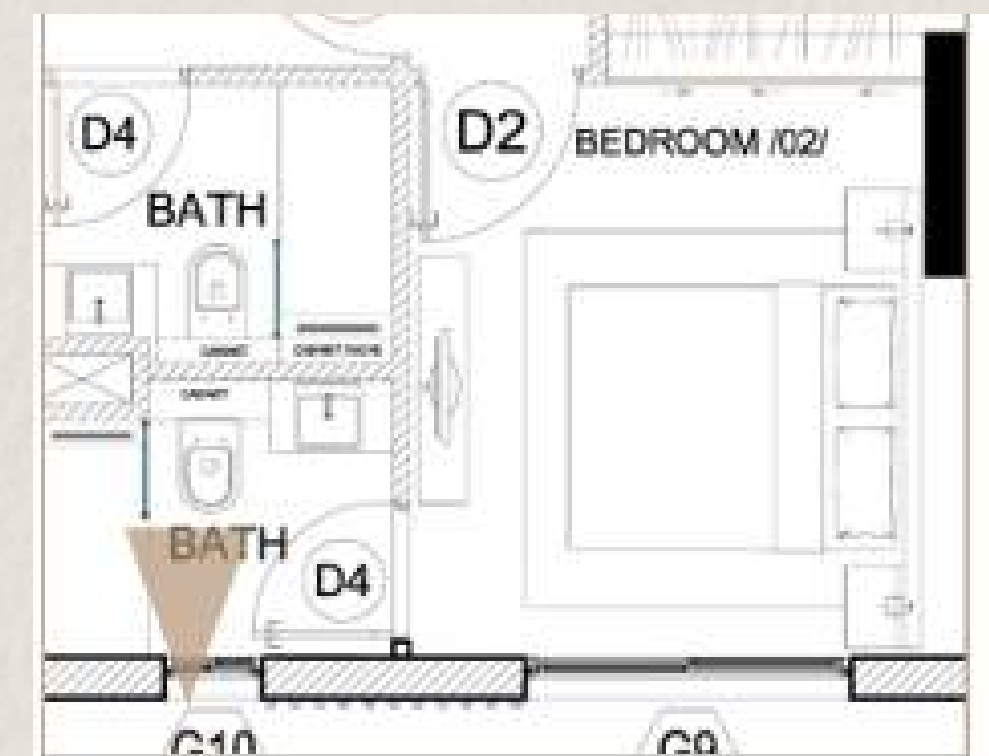
**Bedroom 2**





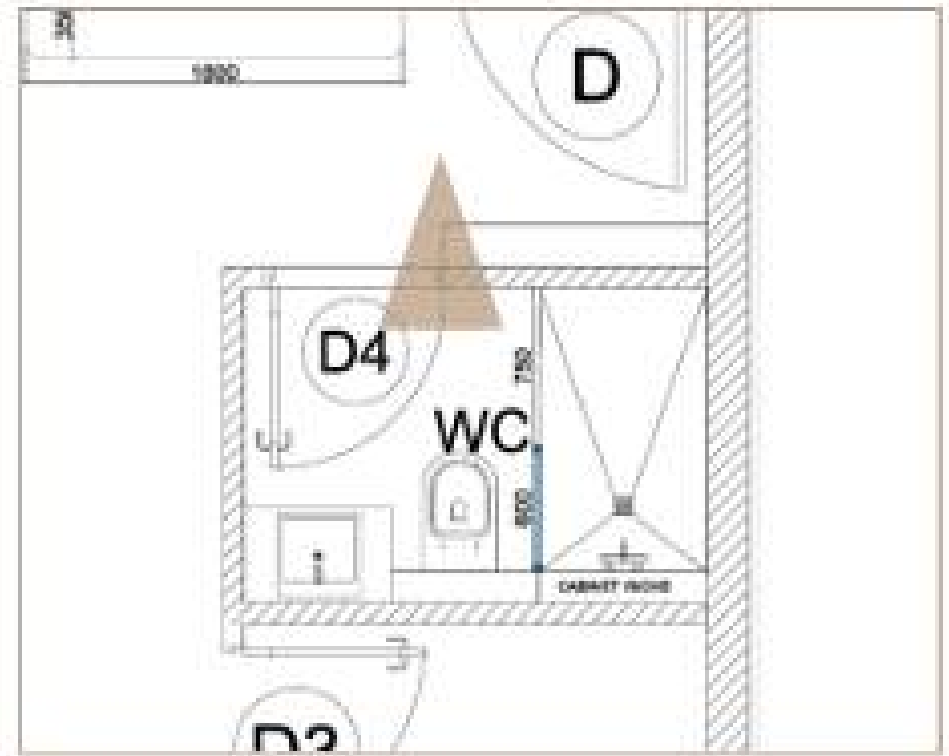
**Bedroom 2**





**Bedroom 2**





**Powder Room**



## AMENITIES





**Curtain Fountain**





Outside Sitting Area





Outside Sitting Area





Swimming Pool





Swimming Pool





GYM





GYM





Lounge





Lounge



# FLOOR PLANS





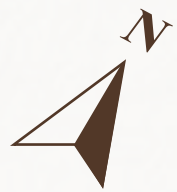
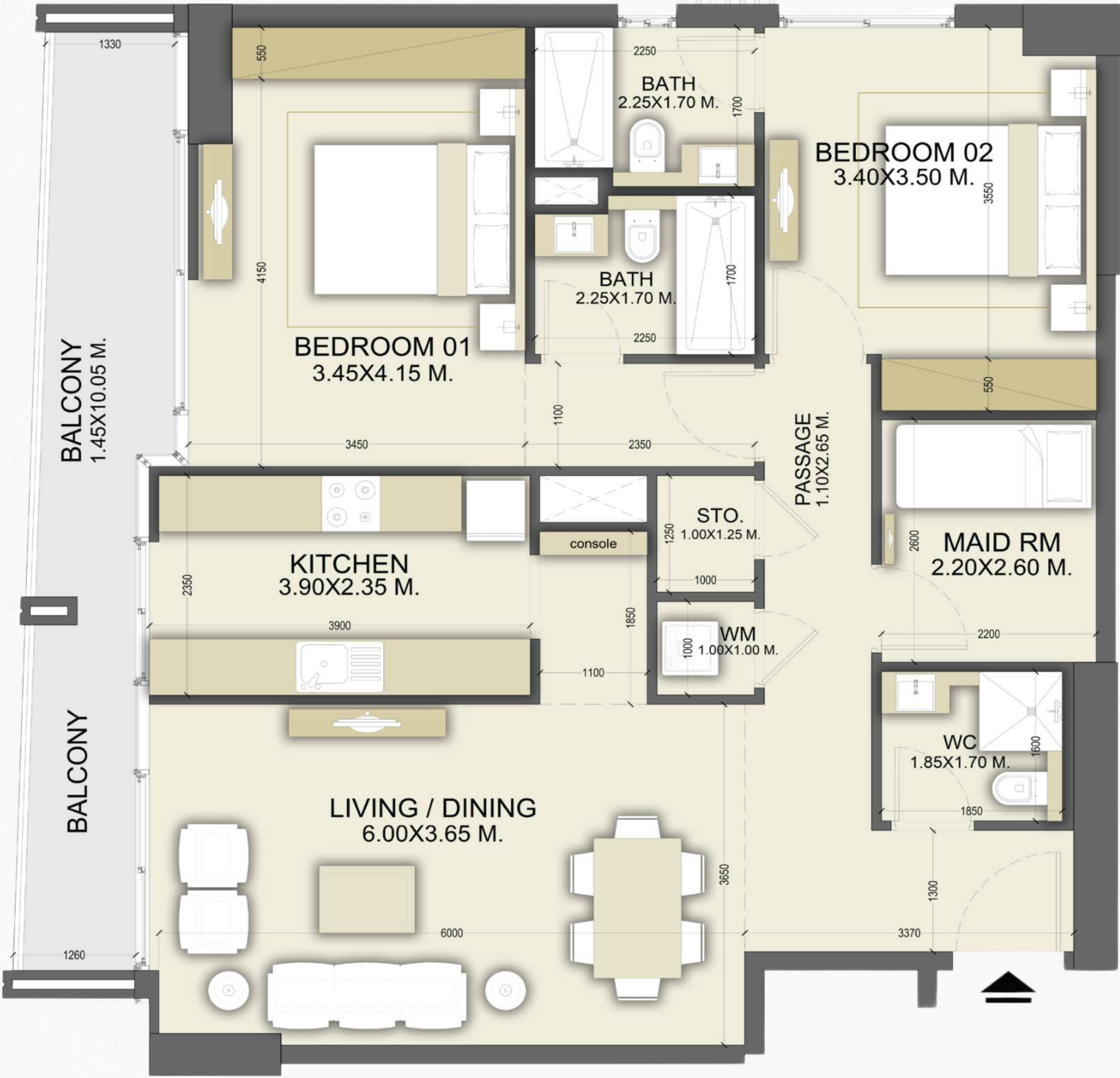
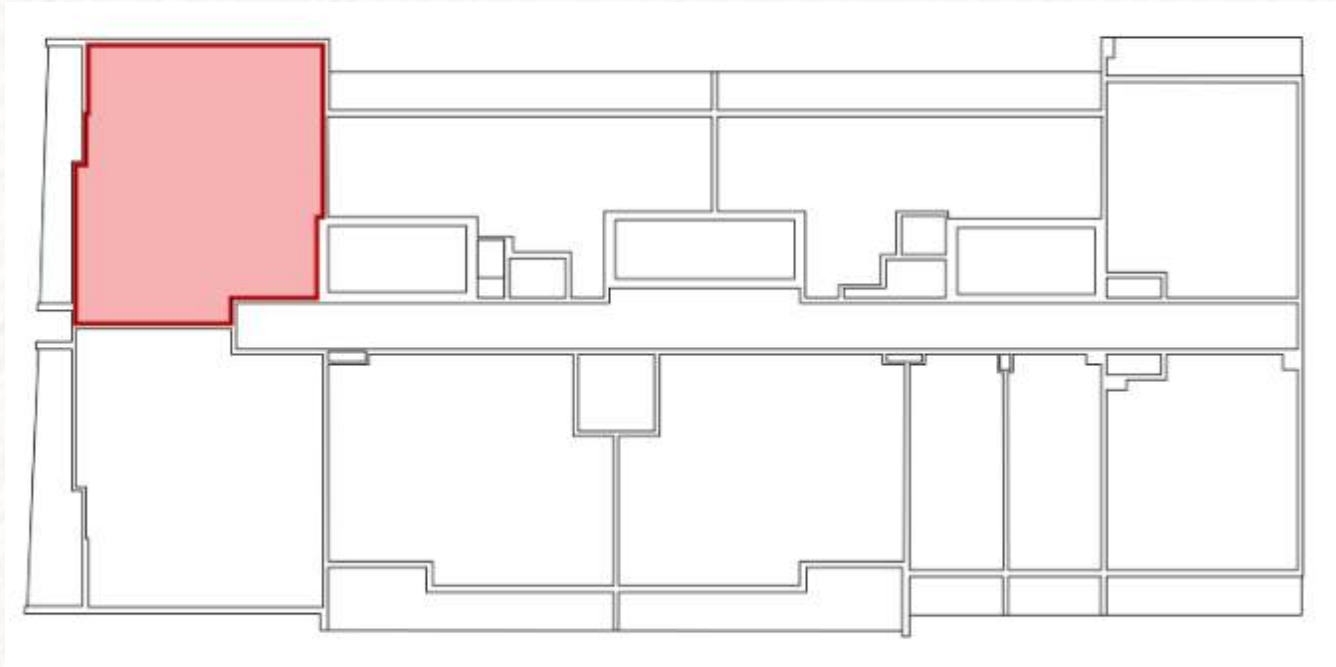






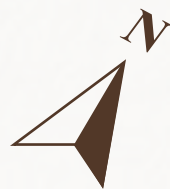
# FLAT - 01 (2-BEDROOM)

FLAT DETAIL		
	SQ.MT.	SQ.FT.
FLAT AREA	102.94 sq.m.	1108.04 sq.ft.
BALCONY AEA	12.85 sq.m.	138.32 sq.ft.
TOTAL SALEABLE AREA	115.79 sq.m.	1246.35 sq.ft.

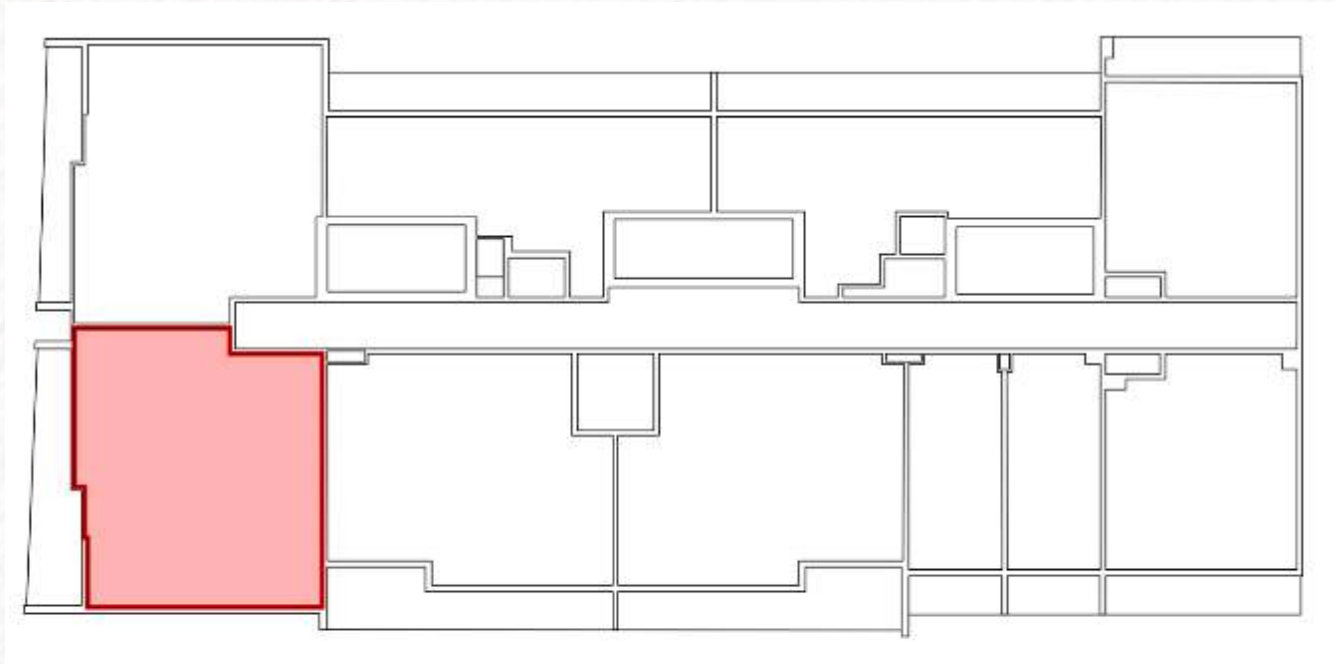




# FLAT - 02 (2-BEDROOM)



FLAT DETAIL		
	SQ.MT.	SQ.FT.
FLAT AREA	103.14 sq.m.	1110.19 sq.ft.
BALCONY AEA	17.46 sq.m.	187.94 sq.ft.
TOTAL SALEABLE AREA	120.60 sq.m.	1298.13 sq.ft.



1ST - 13TH FLOOR

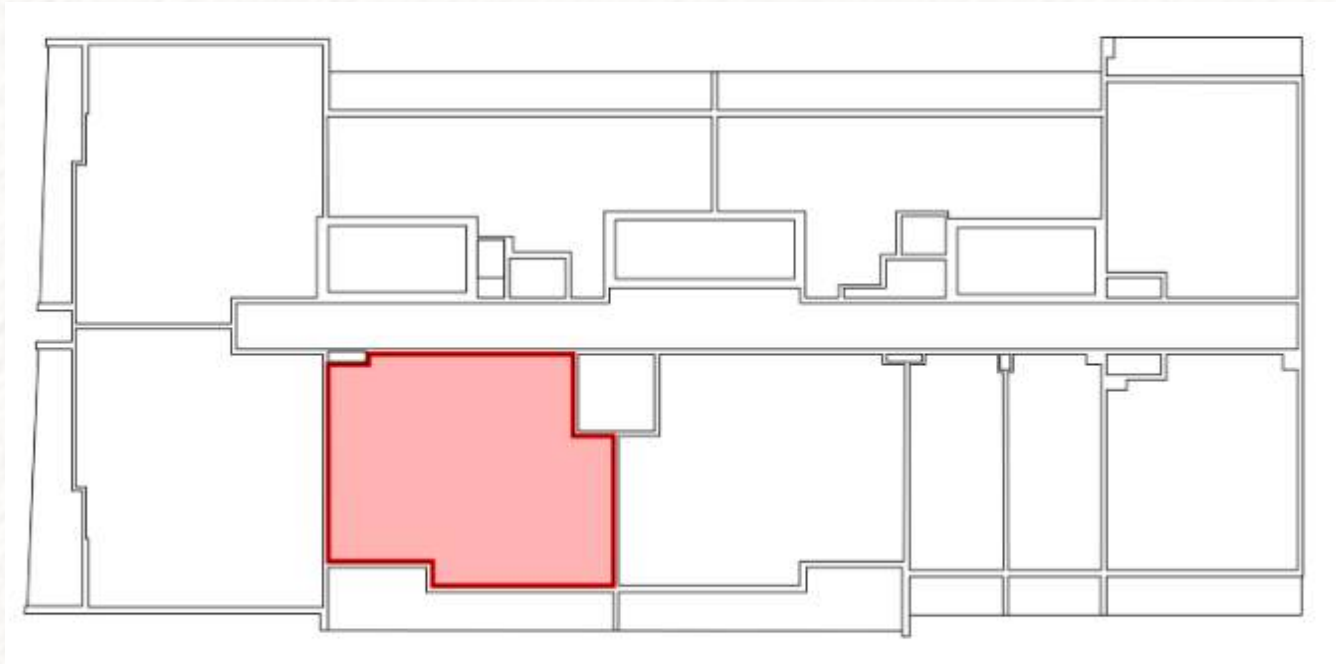




# FLAT - 03 (2-BEDROOM)



FLAT DETAIL		
	SQ.MT.	SQ.FT.
FLAT AREA	95.47 sq.m.	1027.63 sq.ft.
BALCONY AEA	22.07 sq.m.	237.56 sq.ft.
TOTAL SALEABLE AREA	117.54 sq.m.	1265.19 sq.ft.

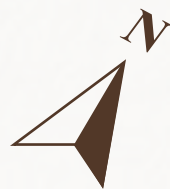


1ST - 13TH FLOOR

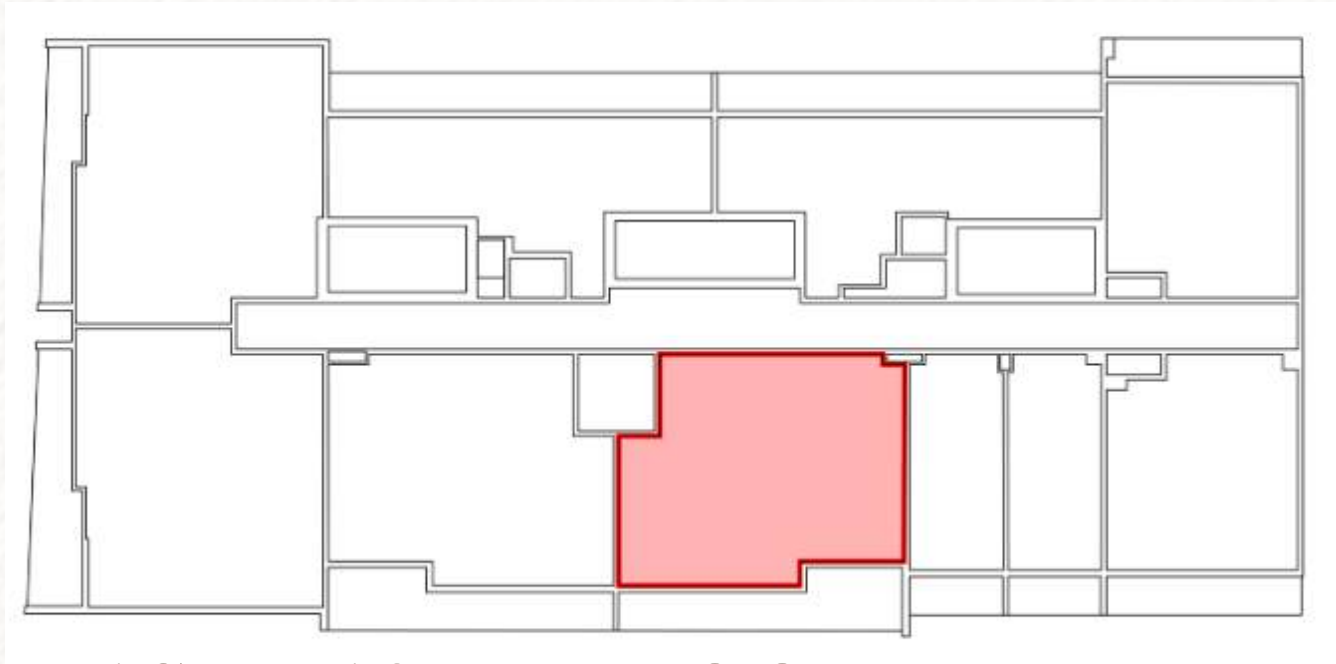




# FLAT - 04 (2-BEDROOM)



FLAT DETAIL		
	SQ.MT.	SQ.FT.
FLAT AREA	95.33 sq.m.	1026.12 sq.ft.
BALCONY AEA	21.92 sq.m.	235.94 sq.ft.
TOTAL SALEABLE AREA	117.25 sq.m.	1262.07 sq.ft.



1ST - 13TH FLOOR

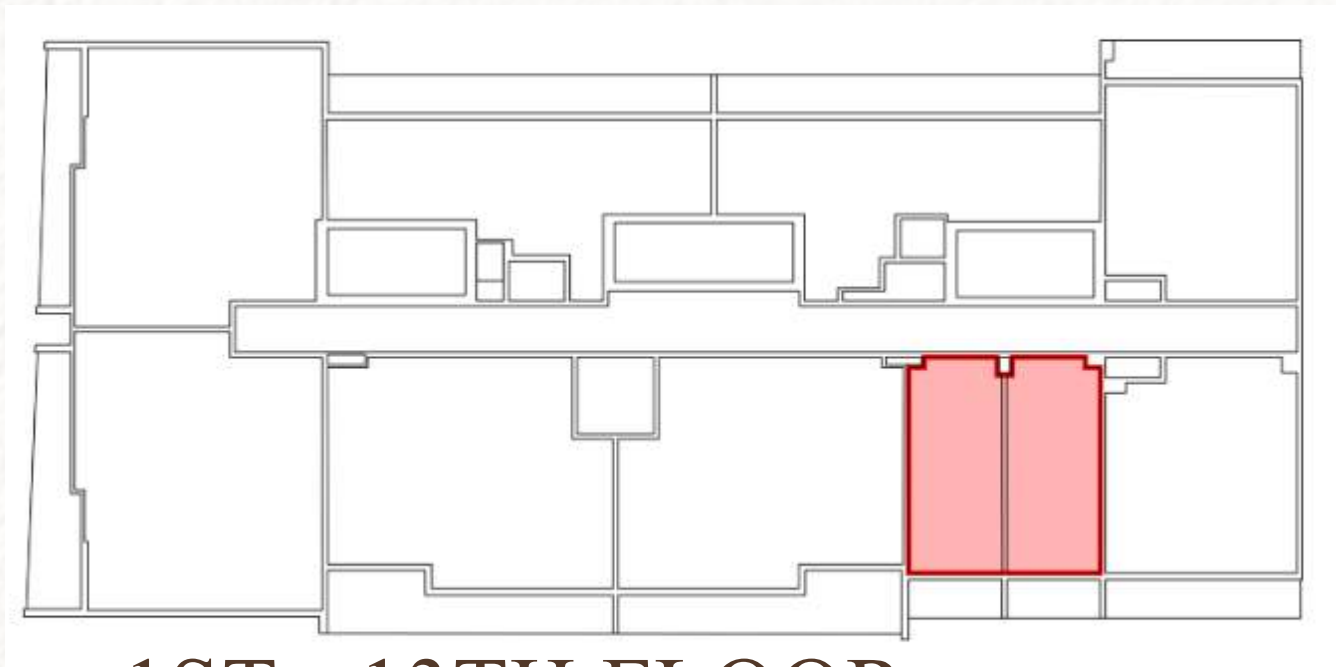




# FLAT - 05 & 06 (STUDIO)

05 - STUDIO FLAT DETAIL		
	SQ.MT.	SQ.FT.
FLAT AREA	32.89 sq.m.	354.02 sq.ft.
BALCONY AEA	6.29 sq.m.	67.70 sq.ft.
TOTAL SALEABLE AREA	39.18 sq.m.	421.73 sq.ft.

06 - STUDIO FLAT DETAIL		
	SQ.MT.	SQ.FT.
FLAT AREA	32.16 sq.m.	346.17 sq.ft.
BALCONY AEA	6.08 sq.m.	65.44 sq.ft.
TOTAL SALEABLE AREA	38.24 sq.m.	411.61 sq.ft.



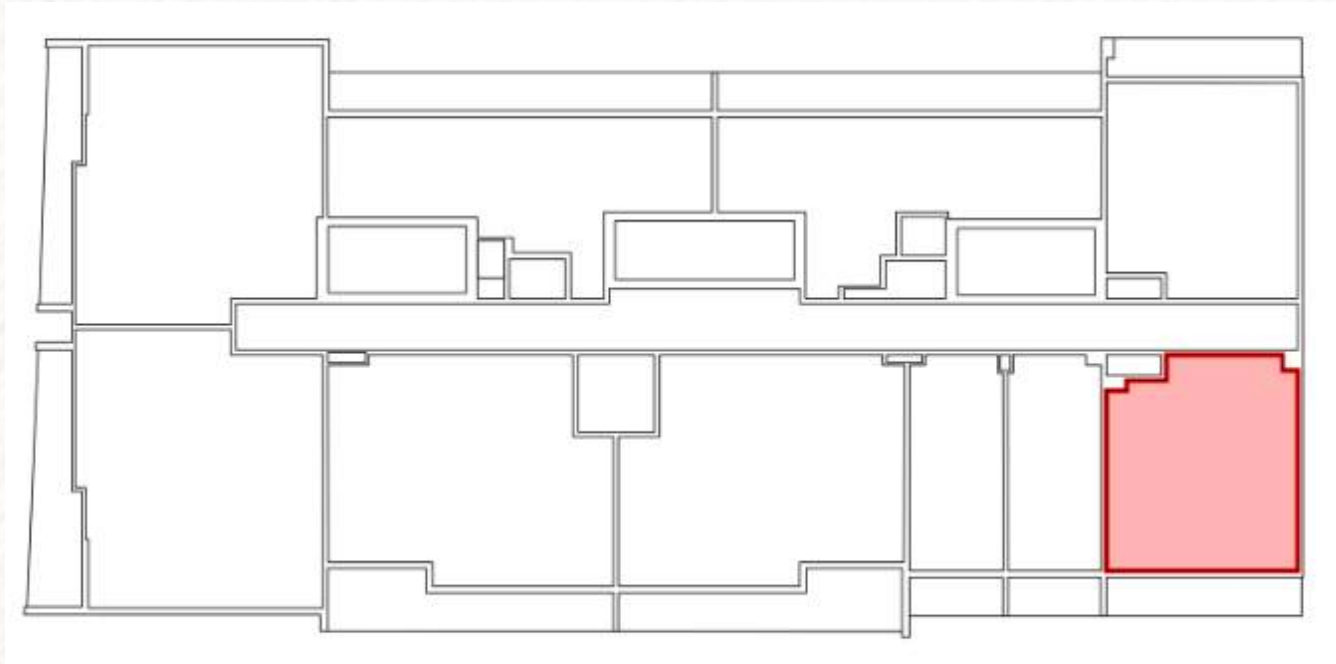
1ST - 13TH FLOOR





# FLAT - 07 (1 BEDROOM)

FLAT DETAIL		
	SQ.MT.	SQ.FT.
FLAT AREA	63.21 sq.m.	680.39 sq.ft.
BALCONY AEA	12.22 sq.m.	131.53 sq.ft.
TOTAL SALEABLE AREA	75.43 sq.m.	811.92 sq.ft.



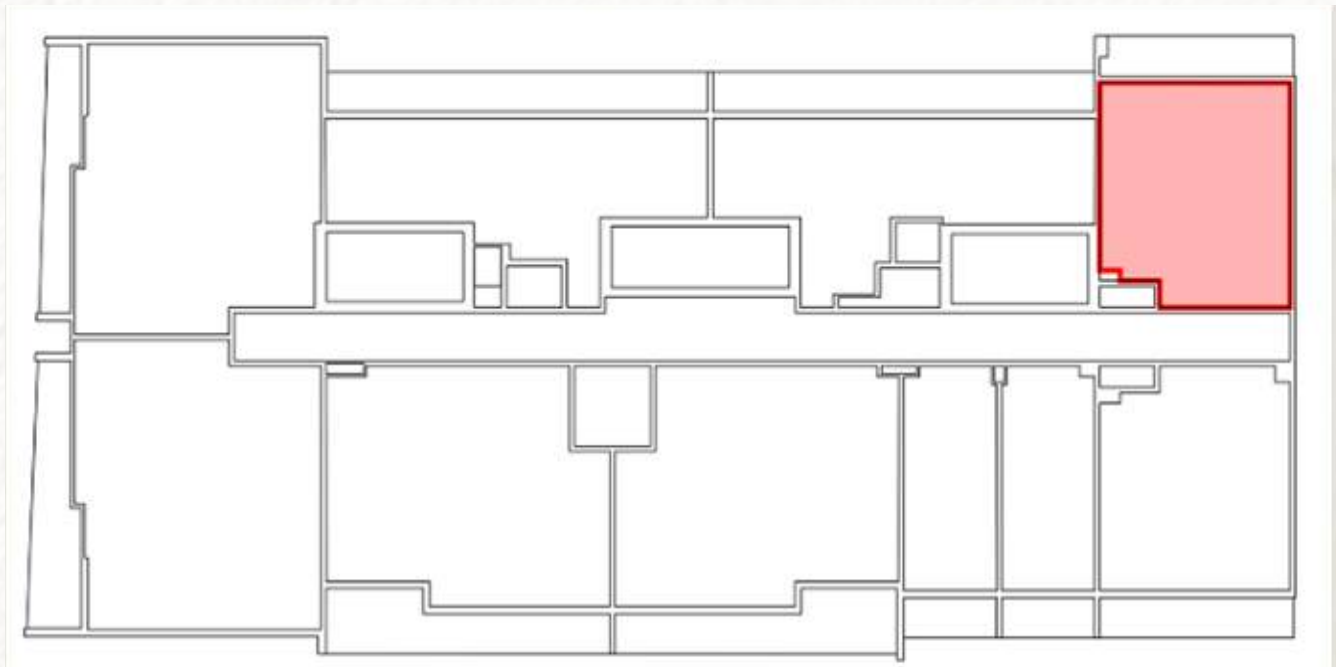
1ST - 13TH FLOOR





# FLAT - 08 (1 BEDROOM)

FLAT DETAIL		
	SQ.MT.	SQ.FT.
FLAT AREA	63.22 sq.m.	680.49 sq.ft.
BALCONY AEA	11.99 sq.m.	129.06 sq.ft.
TOTAL SALEABLE AREA	75.21 sq.m.	809.55 sq.ft.

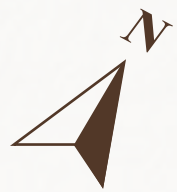


1ST - 13TH FLOOR

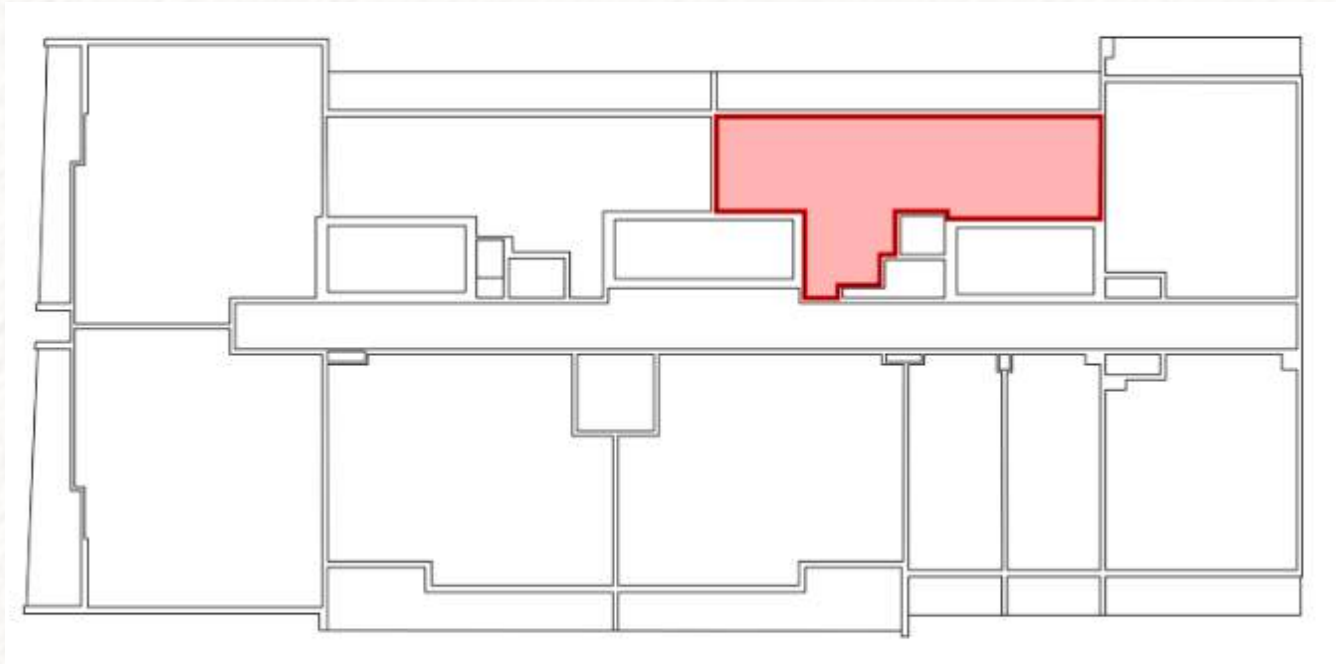




# FLAT - 09 (1 BEDROOM)



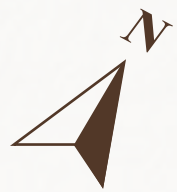
FLAT DETAIL		
	SQ.MT.	SQ.FT.
FLAT AREA	72.52 sq.m.	780.60 sq.ft.
BALCONY AEA	24.28 sq.m.	261.35 sq.ft.
TOTAL SALEABLE AREA	96.80 sq.m.	1041.95 sq.ft.



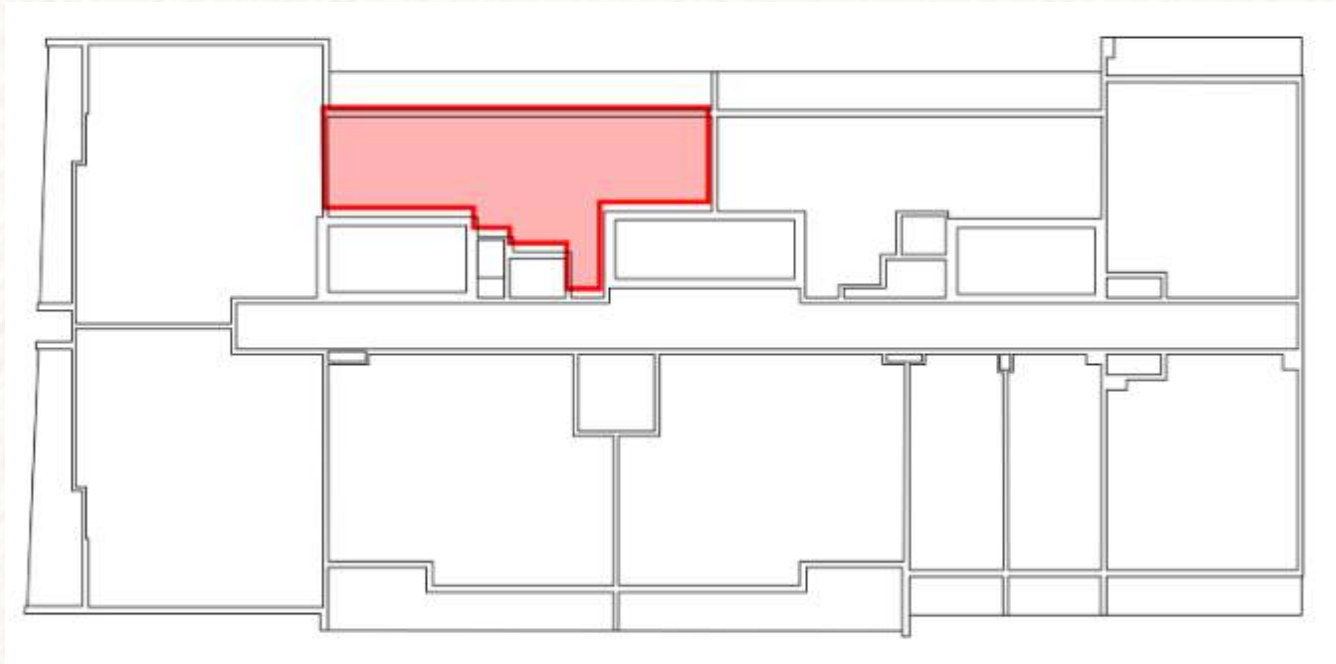
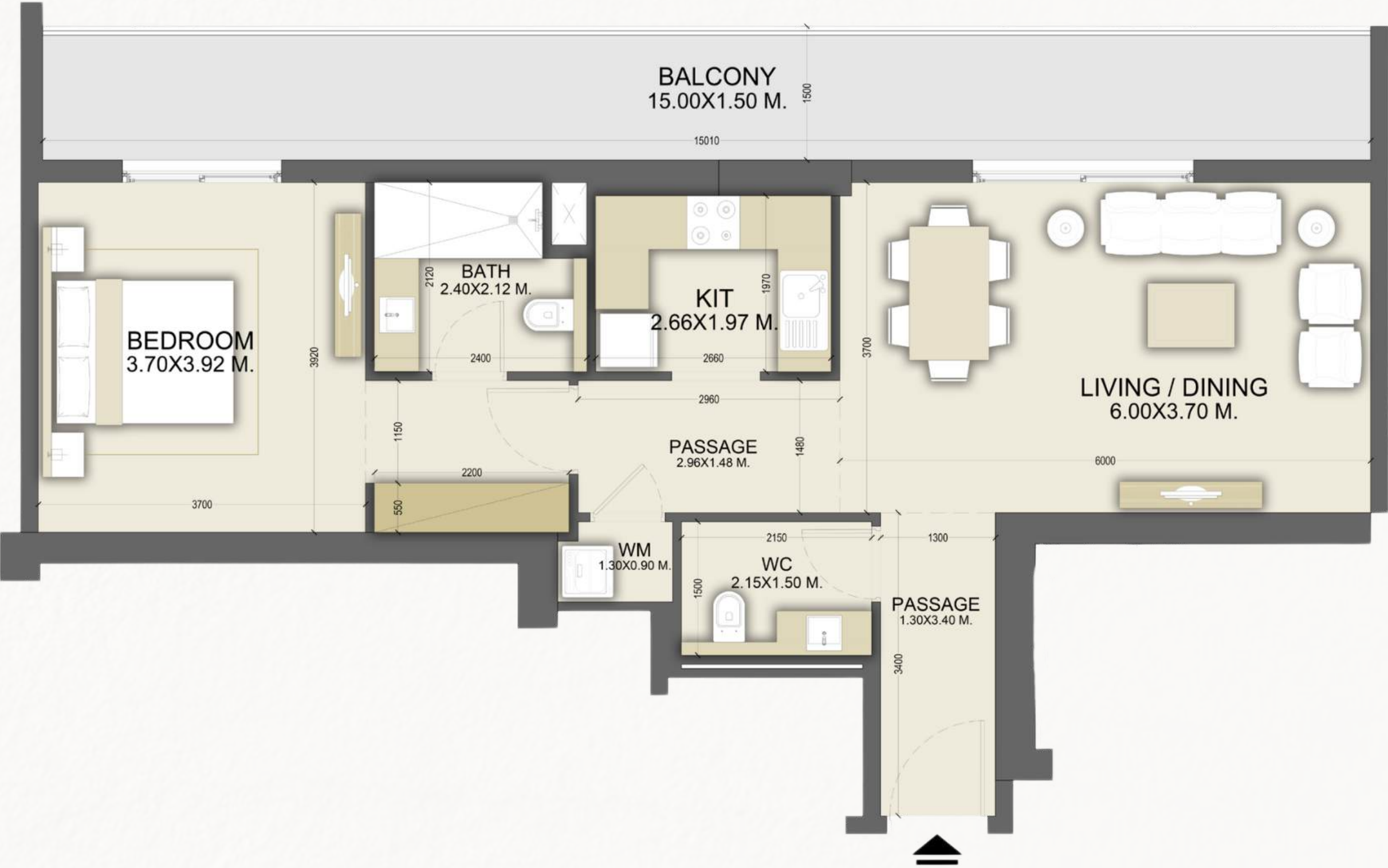
1ST - 13TH FLOOR



# FLAT - 10 (1 BEDROOM)



FLAT DETAIL		
	SQ.MT.	SQ.FT.
FLAT AREA	71.50 sq.m.	769.62 sq.ft.
BALCONY AEA	24.16 sq.m.	260.06 sq.ft.
TOTAL SALEABLE AREA	95.66 sq.m.	1029.67 sq.ft.



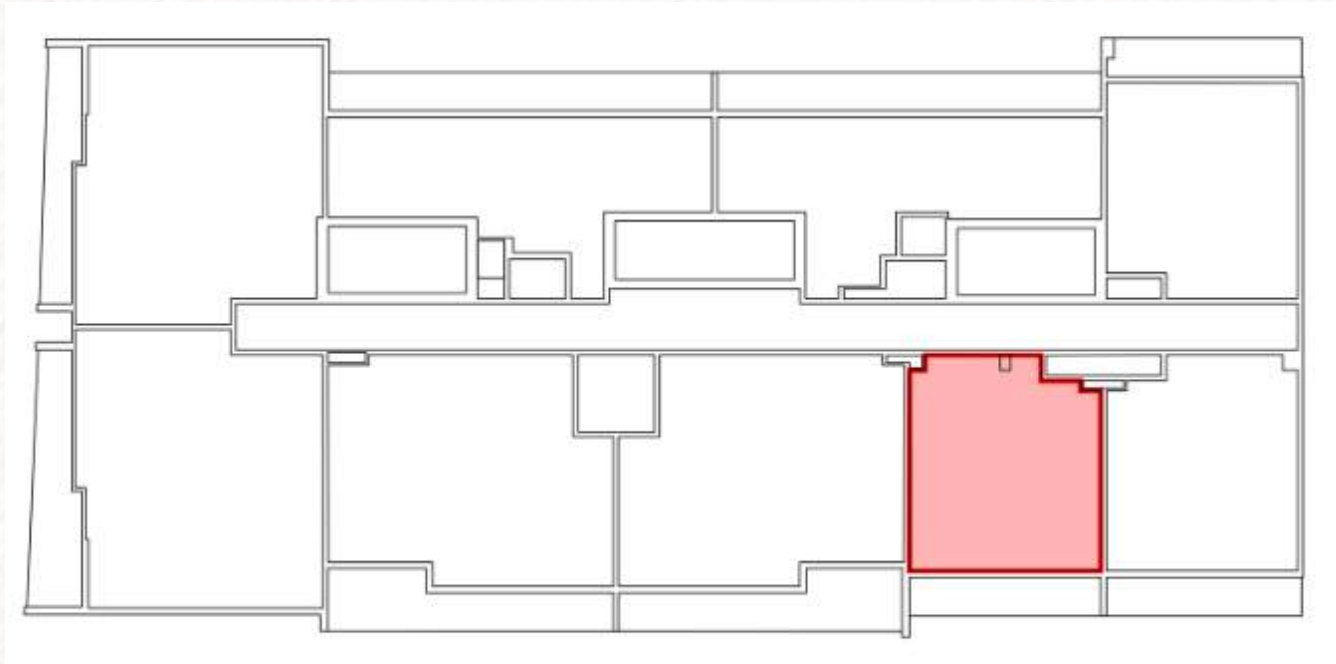
1ST - 13TH FLOOR



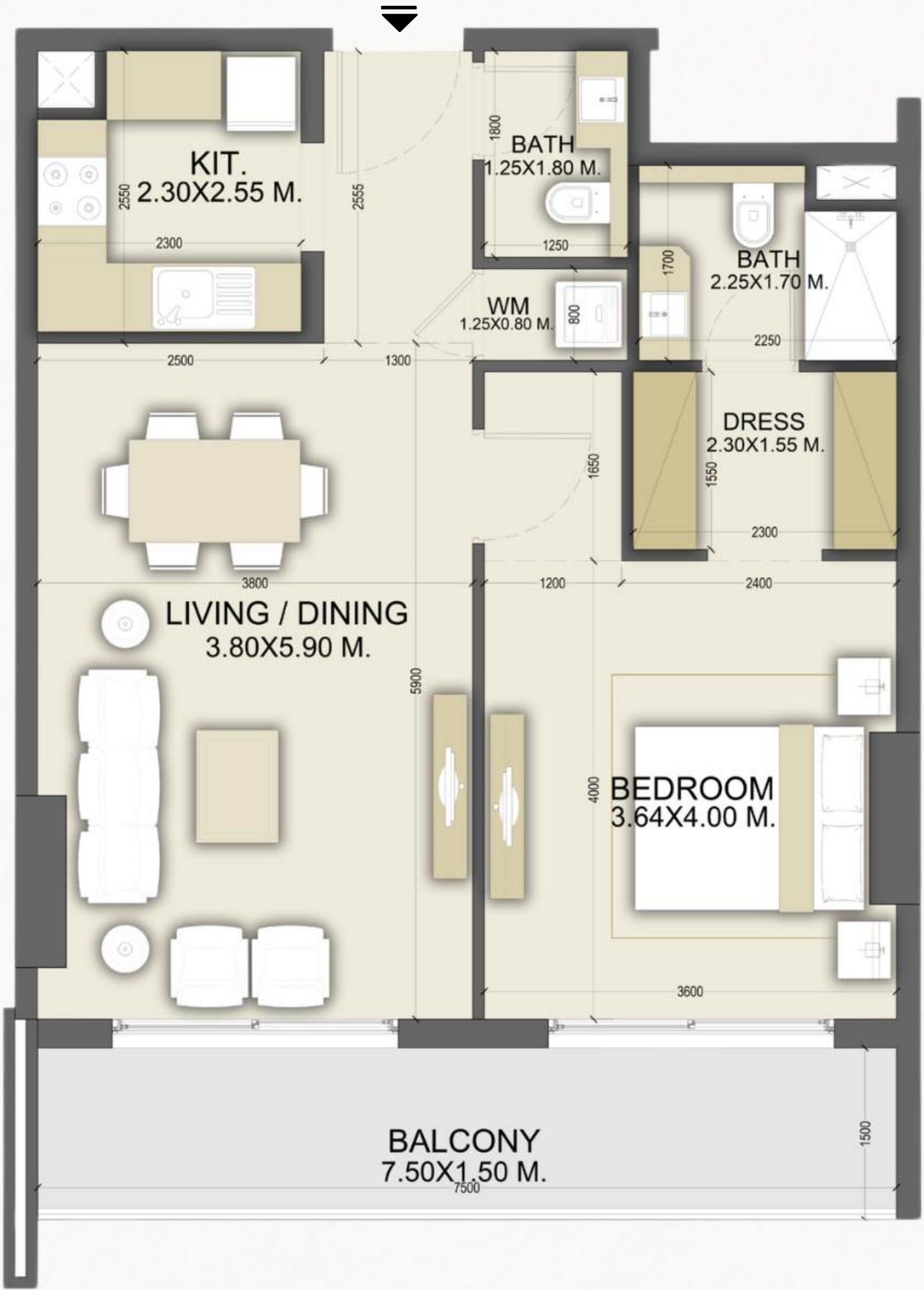
# FLAT - 05 (1 BEDROOM)



FLAT DETAIL		
	SQ.MT.	SQ.FT.
FLAT AREA	63.01 sq.m.	678.23 sq.ft.
BALCONY AEA	12.35 sq.m.	132.93 sq.ft.
TOTAL SALEABLE AREA	75.36 sq.m.	811.17 sq.ft.



4TH - 13TH FLOOR







DUBAI LAND

# DALMORE



fäm<sup>®</sup> Master  
Agency